



Quick Start Guide

Before getting started....

- Check if your BRAVIA's setup is complete.**
- Check your BRAVIA's series name.**

See the next page for details on series names:

Setup procedure differs

depending on which BRAVIA you use:



Update is not required.

Follow the instructions on this Quick Start Guide.



Update your BRAVIA before starting the setup.

Turn on your BRAVIA and find the settings menu as follows:

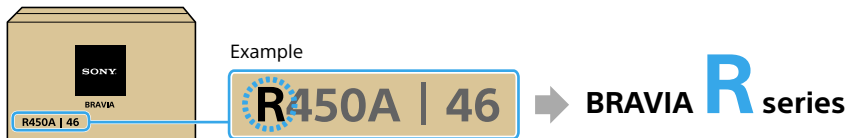
HOME → Settings → Product Support → Software Update

To update, follow the instruction on the screen and select "Update Now."

How do I check my BRAVIA's series name?

You can find the series name in your product's model name. Follow either of the methods below to find your model name.

On your BRAVIA packaging:



In your BRAVIA settings:

HOME → Settings → Product Support → System Information



What you need

In the Box:

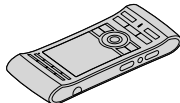
Smart Stick (1)



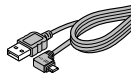
Size AA batteries (2)



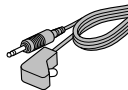
Remote control (1)



Micro USB cable (1)

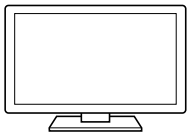


IR (Infrared) Blaster cable (1)



You will also need:

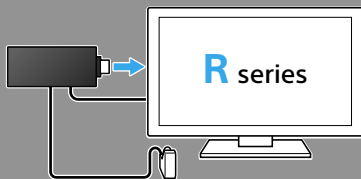
- BRAVIA R, S, W or X series



- Wireless Network
- Wireless network name ("SSID") and Password

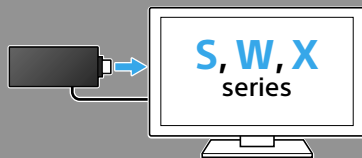
How do you watch TV?

I use my BRAVIA R series



start from **page 7 (1)**

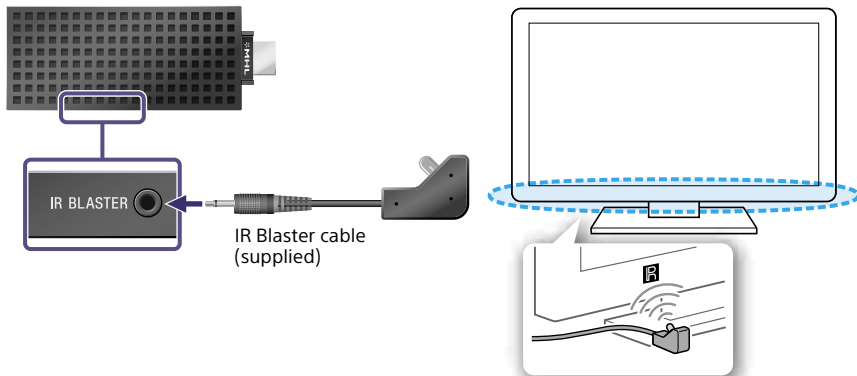
I use my BRAVIA S, W or X series



start from **page 8 (2)**

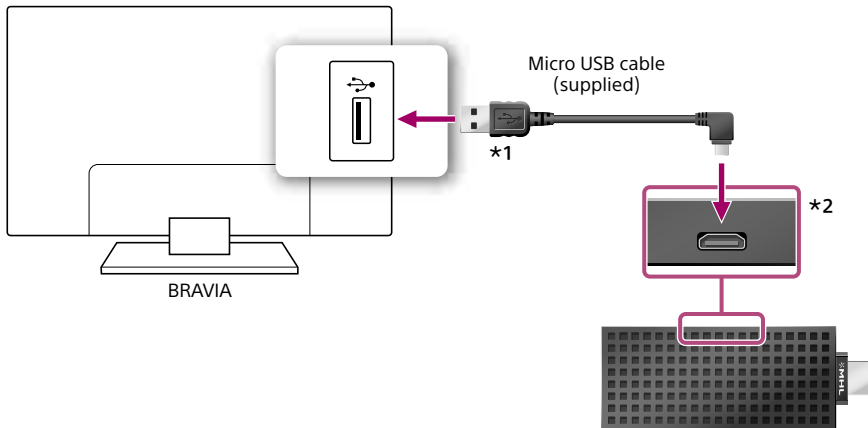
1

Connect the IR Blaster cable to the Smart Stick.
Place the other end near your BRAVIA as illustrated below.



2

Connect the Smart Stick and your BRAVIA using the Micro USB cable to supply power to the Smart Stick.

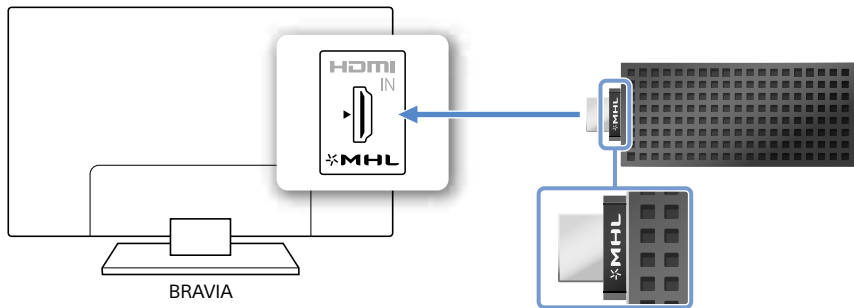


*1 Do not connect this plug to devices other than the BRAVIA.

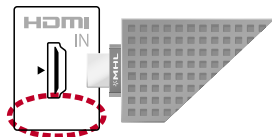
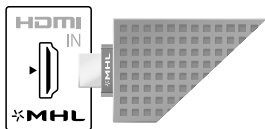
*2 This jack is for power supply from BRAVIA.

3

Finally, connect the Smart Stick directly to your BRAVIA.



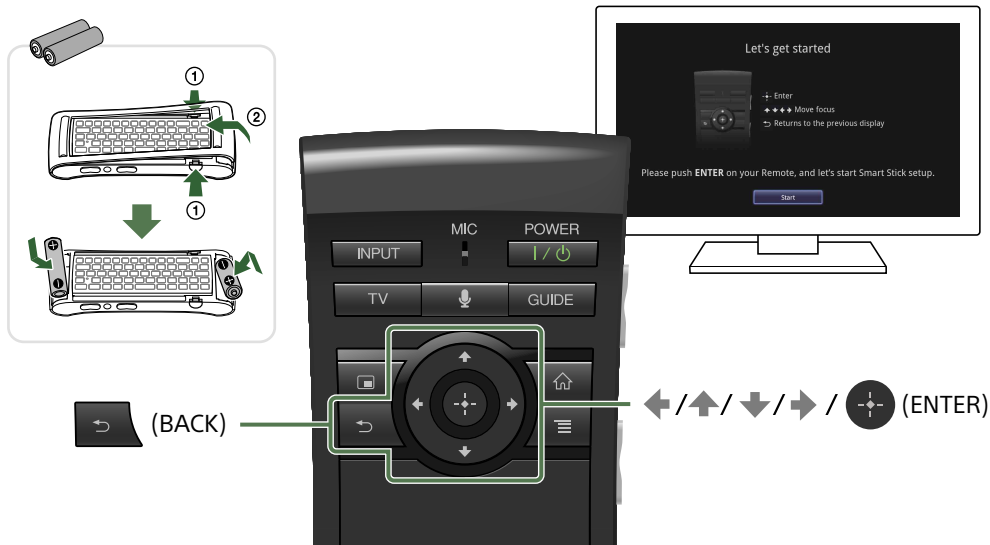
Do not connect the Smart Stick to any jacks other than the jack labeled *MHL.



4

Turn on your BRAVIA and follow the on-screen Initial Setup Wizard to get the system ready for use.

If the setup screen is not displayed, change the TV input to "MHL."



Congratulations! You have now finished the setup.



Following pages...

About your remote control.....p12
Learn more about the Smart
Stick/Troubleshootingp14

About your remote control



TV

**POWER
ON/STANDBY*1**

Turns on or off the Smart Stick and your BRAVIA.

*1 You may also need your BRAVIA's remote control to turn your BRAVIA on/off if you use BRAVIA R series.

HOME

Touch pad*2

*2 Touch pad will not work on the HOME screen, Live TV screen and a few other screens.



HOME

Access each feature of the HOME screen.



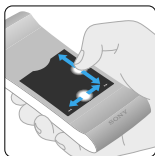
TV

Watch TV broadcasts.

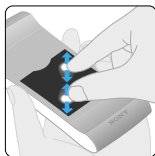
Touch pad



Click



Scroll vertically &
horizontally



Zoom in/out

Explore the online Help Guide for more finger gestures/details on how to use your remote control (see page 14).

Learn more about the Smart Stick/ Troubleshooting

The online Help Guide gives you complete guide on how to use the Smart Stick.

Accessing the Help Guide from the Smart Stick



Accessing the Help Guide from your PC/mobile

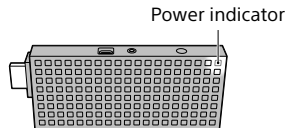
http://rd1.sony.net/help/nsz/gu1/h_zz/



Troubleshooting

There is no picture (screen is dark).

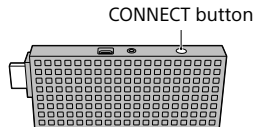
- Make sure that the Smart Stick is securely connected to the MHL jack.
- Make sure that the supplied USB cable is securely connected to the Smart Stick and your BRAVIA.
- Make sure that all the connecting cables are securely connected.
- Change the input of the TV to display the signal from the MHL jack of the Smart Stick.
- Make sure that the power indicator is lit up white as illustrated below.



- Disconnect the Smart Stick from the TV and reconnect it securely to the MHL jack.

The remote control does not function.

- Make sure that the batteries are inserted correctly into the remote control. If the remote control still does not function, re-pair the remote control with the Smart Stick by following the procedure below.
 - ① Press shortly the CONNECT button, located on the side of the Smart Stick.
 - ② Follow the instructions on the screen.



The Smart Stick cannot connect to the Internet.

- Make sure that the Wireless LAN router is on.
- Check the settings of the Wireless LAN router. For details, refer to the operating instructions supplied with the Wireless LAN router.

Troubleshooting

- Move the Smart Stick and the Wireless LAN router closer to each other. The Wireless LAN connection is affected by the surrounding environment (the wall material, radio wave receiving condition, obstacles between the Smart Stick and the Wireless LAN router, etc.).
- Move the Smart Stick away from devices that use a 2.4 GHz frequency band (microwaves, Bluetooth devices, cordless digital devices, etc.), or turn off such devices. These devices may interrupt the communication between the Smart Stick and the Wireless LAN router.
- If you need MAC address in the Initial Setup Wizard, please select "Explain step" on "Connect to the Internet" screen.

The remote control cannot be used to control connected devices.

- Make sure that the IR Blaster cable is securely connected to the Smart Stick.
- Adjust the location of the IR Blaster near the connected device while checking the remote control to see if it works.

The LED on the remote control is flashing.

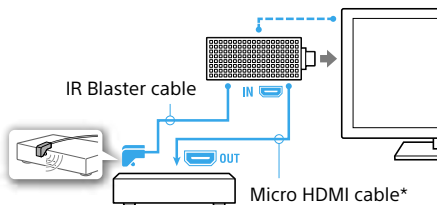
- The remote control is being paired. Perform pairing according to the instructions on the screen.
- The LED on the remote control continues to flash after pairing is complete because the remote control is connecting with the Smart Stick. This is not a malfunction. The LED on the remote control flashes faster when it starts connecting with the Smart Stick.

The Smart Stick does not work, or you want to reboot the Smart Stick.

- Press **Ctrl** (Control), **Shift** (Shift) and **⌫** (Backspace) at the same time on the keyboard of the remote control to reboot the Smart Stick. If the Smart Stick still does not work, disconnect the Smart Stick from the TV and reconnect it securely to the MHL jack. This does not initialize the Smart Stick settings or other such settings.

When you want to connect a Cable/Satellite Box.

- Make sure that your Cable/Satellite Box has an HDMI OUT jack and connect the Smart Stick to the Cable/Satellite Box using a Micro HDMI cable (not supplied) as illustrated below. If your Cable/Satellite Box has no HDMI OUT jack, you cannot connect the Smart Stick to the Cable/Satellite Box.



* Some Micro HDMI cables may not work properly with the Smart Stick. For details, refer to the Help

Guide (page 14).

- If you see no picture (screen is dark), try the followings:
 - Make sure that the Micro HDMI cable is securely connected to the Smart Stick and the HDMI OUT of the Cable/Satellite Box.
 - Turn off the Cable/Satellite Box, then turn it on again.
 - If this does not fix the problem, disconnect and reconnect the Micro HDMI cable.

© 2013 Sony Corporation
Printed in China
4-468-448-F1(1)



**See the Help Guide for
complete instructions**

http://rd1.sony.net/help/nsz/gu1/h_zz/



Screen images, operations, and specifications
are subject to change without notice.