



## Enjoy Music with Xperia/iPhone via a Wireless Network

### Quick Setup Guide

This leaflet is a setup guide for enjoying music from your Xperia (or Xperia Tablet)/iPhone (or iPad/iPod) with DLNA or AirPlay function via a wireless network.

A wireless LAN router (including an access point) is necessary in order to use the wireless network.

Home Audio System

CMT-SBT300W/SBT300WB

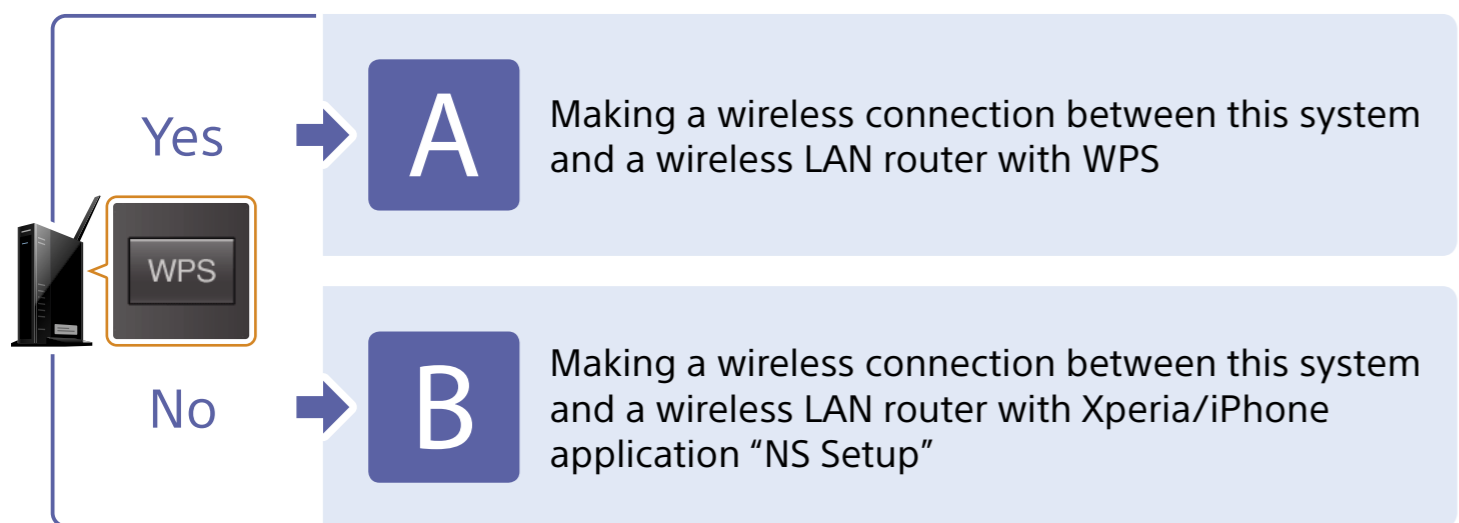
Refer to the operating instructions of this system in the cases below.

- To play music with another smartphone or a personal computer
- When the "WALKMAN" application\* is not installed on your Xperia
- To play music with BLUETOOTH

4-464-271-11(1)

© 2013 Sony Corporation Printed in China

## Is there the WPS button on your wireless LAN router?

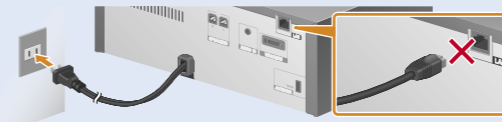


\* Your Xperia may not have the "WALKMAN" application. In that case, this function cannot be used. You can listen to music with some models of "WALKMAN" with this function, but they may require different operation. Refer to the operating instructions of your "WALKMAN" for details.

# A

## Making a wireless connection between this system and a wireless LAN router with WPS

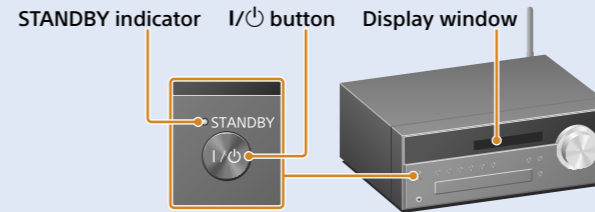
**1** Check that the network (LAN) cable is **disconnected** from the system then connect the power cord.



**2** Press the I/⏻ button to turn the system on.

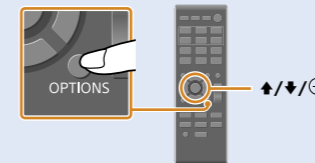
**3** The red STANDBY indicator goes off then starts flashing in the display window.

It may take several minutes until starts flashing.



**4** Press the OPTIONS button on the remote to display "BT/NW STBY." Press the button on the remote repeatedly to select "WPS" then press the button.

If "WPS" does not appear, wait about 2 minutes.



**5** When "OK" appears on the display, press the button.

"WPS" flashes.

**6** Hold the WPS button on the wireless LAN router pressed for a few seconds.

You must keep pressing the WPS button with some routers.



**7** "CONNECT" flashes after "WPS" flashes for several tens of seconds in the display window of the system, after which will light once connection is completed.

If does not appear within 5 minutes or so, the setup may not have been completed properly. In that case, proceed from step 4 again. If the setup does not become successful after that, try connection **B** on the reverse side of this leaflet.

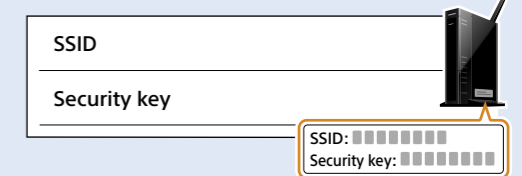
When the connection between your smartphone and the wireless LAN router has been completed, go to the following.

For a user of Xperia → [Playing music stored in Xperia](#)

For a user of iPhone → [Playing music stored in iPhone](#)

**8** Make sure that your wireless LAN router is turned on. Have your SSID and Security key at hand.

Refer to the operating instructions of the wireless LAN router.

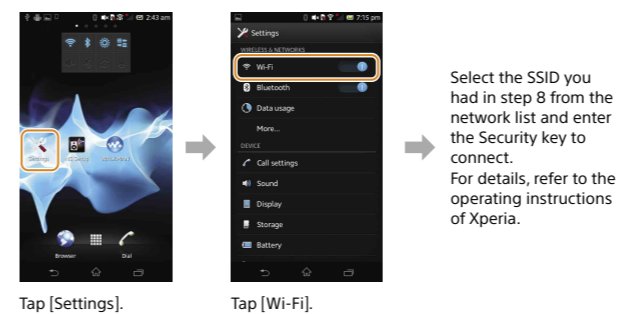


**9** Make a wireless connection between your smartphone and the wireless LAN router.

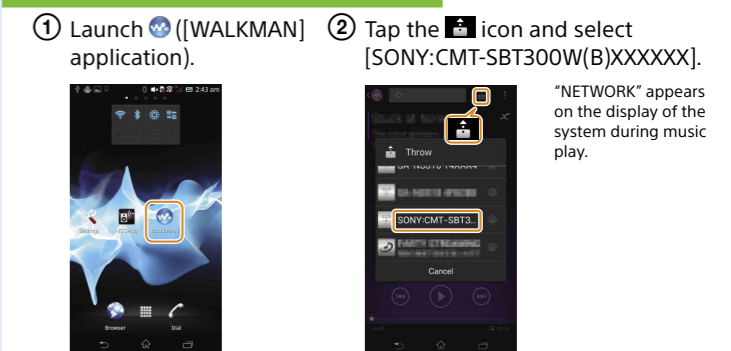
For a user of Xperia → [Connecting Xperia with the wireless LAN](#)

For a user of iPhone → [Connecting iPhone with the wireless LAN](#)

### Connecting Xperia with the wireless LAN



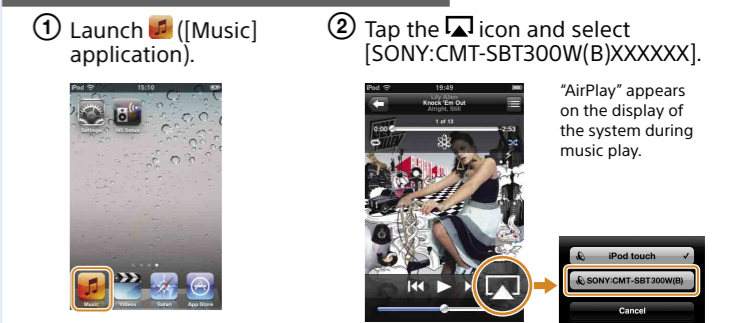
### Playing music stored in Xperia



### Connecting iPhone with the wireless LAN



### Playing music stored in iPhone

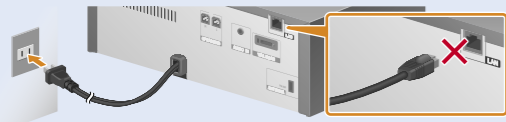


# B

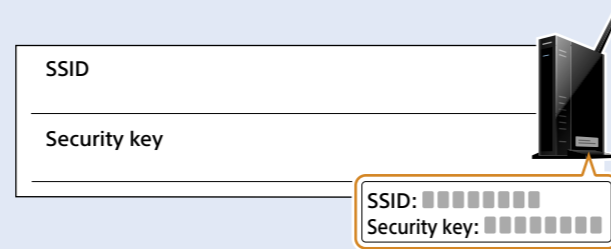
## Making a wireless connection between this system and a wireless LAN router with Xperia/iPhone application "NS Setup"

You can make a wireless connection between this system and your wireless LAN router by downloading the application "NS Setup" to your smartphone and operating as follows.

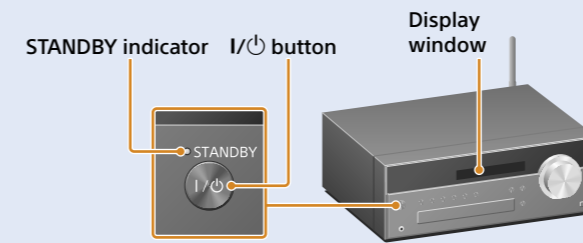
- 1 Check that the network (LAN) cable is **disconnected** from the system then connect the power cord.



- 2 Make sure that your wireless LAN router is turned on. Have your SSID and Security key at hand. Refer to the operating instructions of the wireless LAN router.



- 3 Press the I/⏻ button to turn the system on.



- 4 The red STANDBY indicator goes off then starts flashing in the display window.

It may take several minutes until starts flashing. Perform setup by using the smartphone application "NS Setup."  
For a user of Xperia → [Setup in Xperia](#)  
For a user of iPhone → [Setup in iPhone](#)

### Setup in Xperia

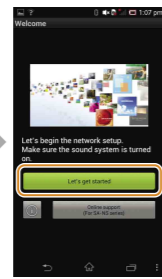
- 1 Download the free application "NS Setup" from "Google Play."
- 2 Perform setup by using the application [NS Setup].



For downloading by 2D Code.

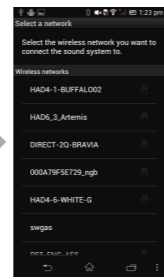


Tap [NS Setup].

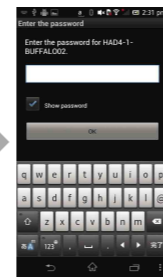


Tap [Let's get started].

The system is preparing for the wireless setting. Wait several minutes until the next display appears.

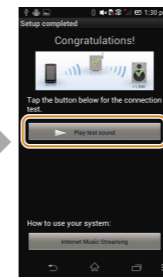


Select the SSID you had in step 2.



Enter the Security key you had in step 2.

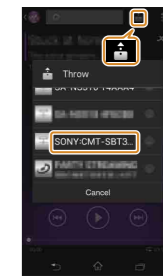
The system is checking whether or not the setup has been performed properly. Wait several minutes until the next display appears. If in "Troubleshooting" below appears, follow its instructions.



Tap [Play test sound] to confirm operation of the system by playing the test sound.

### Playing music stored in Xperia

- 1 Launch ([WALKMAN] application).
- 2 Tap the icon and select [SONY:CMT-SBT300W(B)XXXXXX].



"NETWORK" appears on the display of the system during music play.

### Setup in iPhone

- 1 Download the free application "NS Setup" from "Apple Store."
- 2 Perform setup by using the application [NS Setup].



For downloading by 2D Code.



Tap [Settings].



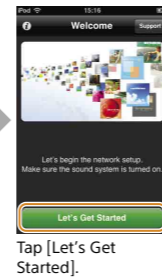
Tap [Wi-Fi].



Tap [Sony\_Wireless...]<sup>1</sup> to add a checkmark then return to the home display.



Tap [NS Setup].

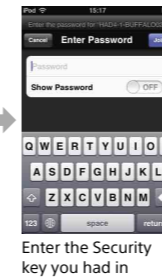


Tap [Let's Get Started].

The system is preparing for the wireless setting. Wait several minutes until the next display appears. If in "Troubleshooting" below appears, follow its instructions.

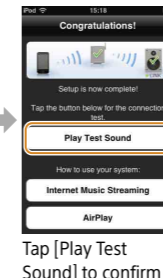


Select the SSID you had in step 2.<sup>2</sup>



Enter the Security key you had in step 2.

The system is checking whether or not the setup has been performed properly. Wait several minutes until the next display appears. If or in "Troubleshooting" below appears, follow its instructions.



Tap [Play Test Sound] to confirm operation of the system by playing the test sound.

### Playing music stored in iPhone

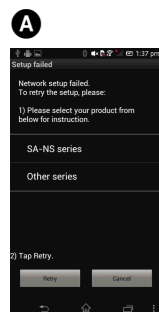
- 1 Launch ([Music] application).
- 2 Tap the icon and select [SONY:CMT-SBT300W(B)XXXXXX].



"AirPlay" appears on the display of the system during music play.

## Troubleshooting

The displays below may appear during setup. In these cases, follow their instructions.



If **A** or **B** appears, reset the system by following the steps in "To reset the system" on the right. Then perform the setup operations again from the first step of **2** in "Setup in Xperia" or "Setup in iPhone."



If **C** appears, perform the setup operations again from the first step of **2** in "Setup in iPhone."



If **D** appears, operate by following the instructions on the display.

If the setup does not become successful after that or if "NO CONNECT" appears in the display window of the system, reset the system by following the steps in "To reset the system" on the right.

### To reset the system

Reset the system as follows.

Also, if "Sony\_Wireless\_Audio\_Setup" is not displayed during setup of iPhone, reset the system.

- 1 Disconnect the power cord from the wall outlet and make sure that the STANDBY indicator does not light. Then reconnect the power cord and turn the system on.
- 2 Hold the (stop) and I/⏻ buttons of the system pressed until "ALL RESET" appears.

