

Personal Audio Docking System

Operating Instructions GB

©2012 Sony Corporation Printed in China

ZS-S3iP



http://www.sony.net/

WARNING

To reduce the risk of fire or electric shock, do not expose this apparatus to rain or moisture.

To reduce the risk of fire, do not cover the ventilation of the apparatus with newspapers, tablecloths, curtains, etc. And do not place lighted candles on the apparatus.

To reduce the risk of fire or electric shock, do not expose this apparatus to dripping or splashing, and do not place objects filled with liquids, such as vases, on the apparatus.

As the main plug is used to disconnect the unit from the mains, connect the unit to an easily accessible AC outlet. Should you notice an abnormality in the unit, disconnect the main plug from the AC outlet immediately.

The unit is not disconnected from the AC power source (mains) as long as it is connected to the wall outlet, even if the unit itself has been turned off.

Do not install the appliance in a confined space, such as a bookcase or built-in cabinet.

Do not expose the batteries (battery pack or batteries installed) to excessive heat such as sunshine, fire or the like for a long time.

The nameplate and important information concerning safety are located on the bottom exterior.

CAUTION

Danger of explosion if battery is incorrectly replaced. Replace only with the same type.

Notes on DualDiscs

A DualDisc is a two sided disc product which mates DVD recorded material on one side with digital audio material on the other side. However, since the audio material side does not conform to the Compact Disc (CD) standard, playback on this product is not guaranteed.

Music discs encoded with copyright protection technologies

This product is designed to playback discs that conform to the Compact Disc (CD) standard. Recently, various music discs encoded with copyright protection technologies are marketed by some record companies. Please be aware that among those discs, there are some that do not conform to the CD standard and may not be playable by this product.

On copyrights

iPhone, iPod, iPod classic, iPod nano, and iPod touch are trademarks of Apple Inc., registered in the U.S. and other countries.

"Made for iPod," and "Made for iPhone" mean that an electronic accessory has been designed to connect specifically to iPod or iPhone, respectively, and has been certified by the developer to meet Apple performance standards. Apple is not responsible for the operation of this device or its compliance with safety and regulatory standards. Please note that the use of this accessory with iPod or iPhone may affect wireless performance.

Note

- This unit is not specified for use with an iPad, and malfunction may result if used with one.



Precautions

Discs that this unit CAN play

- Audio CD
- CD-R/CD-RW (CD-DA*)
- * CD-DA is the abbreviation for Compact Disc Digital Audio. It is a recording standard used for Audio CDs.

Discs that this unit CANNOT play

- CD-R/CD-RW other than those recorded in music CD format
- CD-R/CD-RW of poor recording quality, CD-R/CD-RW that has scratches or are dirty, or CD-R/CD-RW recorded with an incompatible recording device
- CD-R/CD-RW which is finalized incorrectly

Notes on discs

- Before playing, clean the CD with a cleaning cloth. Wipe the CD from the center out. If there is a scratch, dirt or fingerprints on the CD, it may cause tracking error.



- Do not use solvents such as benzene, thinner, commercially available cleaners or anti-static spray intended for vinyl LPs.
- Do not expose the CD to direct sunlight or heat sources such as hot air ducts, nor leave it in a car parked in direct sunlight as there can be a considerable rise in temperature inside the car.
- Do not stick paper or sticker on the CD, nor scratch the surface of the CD.
- After playing, store the CD in its case.

On safety

- As the laser beam used in the CD player section is harmful to the eyes, do not attempt to disassemble the casing. Refer servicing to qualified personnel only.
- Should any solid object or liquid fall into the unit, unplug the unit, and have it checked by qualified personnel before operating it any further.
- Discs with non-standard shapes (e.g., heart, square, star) cannot be played on this unit. Attempting to do so may damage the unit. Do not use such discs.

On power source

- For AC operation, use the supplied AC power cord; do not use any other type.
- Unplug the unit from the wall outlet when it is not being used for an extended period of time.
- When the batteries are not to be used, remove them to avoid damage that can be caused by battery leakage or corrosion.

On placement

- Do not leave the unit in a location near heat sources, in a place subject to direct sunlight, excessive dust or mechanical shock or in a car subject to the direct rays of the sun.
- Do not place the unit on an inclined or unstable place.
- Do not place anything within 10 mm of the side of the cabinet. The ventilation holes must be unobstructed for the unit to operate properly and prolong the life of its components.
- Since a strong magnet is used for the speakers, keep personal credit cards using magnetic coding or spring-wound watches away from the unit to prevent possible damage from the magnet.

On operation

- If the unit is brought directly from a cold to a warm location, or is placed in a very damp room, moisture may condense on the lens inside the CD player section. Should this occur, the unit will not operate properly. In this case, remove the CD and wait about an hour for the moisture to evaporate.

Cleaning the cabinet

- Clean the cabinet, panel and controls with a soft cloth slightly moistened with a mild detergent solution. Do not use any type of abrasive pad, scouring powder, or solvent, such as alcohol or benzene.

NOTES ON LITHIUM BATTERY

- Wipe the battery with a dry cloth to assure a good contact.
- Be sure to observe the correct polarity when installing the battery.
- Do not hold the battery with metallic tweezers, otherwise a short-circuit may occur.

Note

- In the Operating Instructions, "iPod" is used as a general reference to functions on an iPod or iPhone, unless otherwise specified by the text or illustrations.

If you have any questions or problems concerning your unit, please consult your nearest Sony dealer.

General information

Specifications

CD player

System
Compact disc digital audio system
Laser diode properties
Emission duration: Continuous
Laser output: Less than 44.6 μW
(This output is the value measurement at a distance of 200 mm from the objective lens surface on the optical pick-up block with 7 mm aperture.)
Number of channels
2
Frequency response
20 Hz - 20,000 Hz +1/-2 dB
Wow and flutter
Below measurable limit

iPod

DC out: 5 V
MAX: 1 A
(AC only)

Radio

Frequency range
FM: 87.5 MHz - 108 MHz
AM: 531 kHz - 1,602 kHz
Aerial
FM: Telescopic aerial
AM: Built-in ferrite bar aerial

General

Speaker
Full range: 77 mm dia., 8 Ω, cone type (2)
Input
AUDIO IN jack (ø3.5 mm stereo minijack)
Power output
1.7 W + 1.7 W (at 8 Ω, 10% harmonic distortion)
Power requirements
230 V AC, 50 Hz
9 V DC, 6 × R14 (size C) batteries
Power consumption
AC 18 W
Battery life

FM reception

Sony R14P: approx. 4 h
Sony alkaline LR14: approx. 18 h
CD playback
Sony R14P: approx. 1.5 h
Sony alkaline LR14: approx. 7 h

Dimensions
Approx. 356 mm × 134 mm × 234 mm (w/h/d)
(incl. projecting parts)

Mass

Approx. 2.5 kg (incl. batteries)

Supplied accessories
AC power cord (1)
Remote control (with a lithium battery) (1)
Operating Instructions (this document) (1)
Cushion for small-size iPod (1)

Compatible iPod/iPhone models

The compatible iPod/iPhone models are as follows.
Update the software of the iPod/iPhone to the latest version before using it with this unit.

iPod touch (4th generation)
iPod touch (3rd generation)
iPod touch (2nd generation)
iPod nano (6th generation)*
iPod nano (5th generation)
iPod nano (4th generation)
iPod nano (3rd generation)
iPod classic
iPhone 4S
iPhone 4
iPhone 3GS
iPhone 3G

* The iPod nano (6th generation) cannot be controlled by the remote when the command of "MENU," "▲," "▶," and "ENTER" is pressed.

Design and specifications are subject to change without notice.

Troubleshooting

General

- The power is not on.**
 - Connect the AC power cord to the wall outlet securely.
 - Make sure the batteries are inserted correctly.
 - Replace all the batteries with new ones if they are weak.
- There is no sound.**
 - Adjust **VOLUME +/-** (**VOL +/-** on the remote).
- Noise is heard.**
 - Someone is using a portable telephone or other equipment that emits radio waves near the unit.
 - Move the portable telephone, etc., away from the unit.
- The sound is weak when using batteries.**
 - Replace all the batteries with new ones if they are weak.
- The backlight of the display does not light up.**
 - It is designed that way for this unit, and is not a malfunction.

iPod

- There is no sound.**
 - Make sure the iPod is connected firmly.
 - Make sure that the function for iPod is activated.
- The iPod cannot be operated with this unit.**
 - Make sure the iPod is securely connected.
 - Check that the iPod is compatible with this unit. (See "Compatible iPod/iPhone models.")
- The iPod cannot be charged.**
 - Make sure the iPod is securely connected.
 - Check that the iPod is compatible with this unit. (See "Compatible iPod/iPhone models.")
 - You cannot charge the iPod when the unit is using batteries.

CD player

- There is no sound.**
 - Make sure that the CD function is activated.
- The CD does not play or "NO DISC" is displayed even when a CD is in place.**
 - Place the CD with the label surface up.
 - Clean the CD.
 - If the unit is brought directly from a cold to a warm location, or is placed in a very damp room, moisture may condense on the lens inside the CD player section.
 - Take out the CD and leave the CD compartment open for about an hour to dry moisture condensation.
 - Make sure that the disc is playable for this unit. (See "Discs that this unit CAN play.")
 - There is a problem with the quality of the CD-R/CD-RW, recording device or application software.
 - Replace all the batteries with new ones if they are weak.
- The sound drops out.**
 - Reduce the volume.
 - Clean the CD, or replace it if the CD is badly damaged.
 - Place the unit in a location free from vibration.
 - Clean the lens with a commercially available blower.
 - The sound may drop out or noise may be heard when using poor quality CD-Rs/CD-RWs, or if there is a problem with the recording device or application software.


Radio

- Reception is poor.**
 - Reorient the aerial or the unit itself to improve the reception. (See "To improve the reception.")
- The sound is weak or is of poor quality.**
 - Replace all the batteries with new ones if they are weak.
 - Move the unit away from the TV or computer.
- The picture of your TV becomes unstable.**
 - If you are listening to an FM program near the TV with an indoor aerial, move the unit away from the TV.

Audio-in

- There is no sound.**
 - Make sure the audio connecting cable is connected firmly.
 - Make sure that the connected optional component is in playback status.
 - Make sure that the Audio-in function is activated.
- The sound is low.**
 - Check the volume of the connected optional component.

Remote control

- The remote does not function.**
 - The unit cannot be turned on with the remote when the AC power source is disconnected. In this case, press **POWER** on the unit to turn it on.
 - Replace the battery in the remote with a new one if it is weak.
 - Make sure that you are pointing the remote at the  (Remote sensor) on the unit.
 - Remove any obstacles in the path of the remote and the unit.
 - Make sure the remote sensor is not exposed to strong light such as direct sunlight or fluorescent lamp light.

After trying the remedies, if you still have problems, unplug the AC power cord or remove all the batteries. After all the indications in the display disappear, plug the AC power cord in or insert the batteries again. If the problem persists, please consult your nearest Sony dealer.

Preparations

Power source

You can use this unit by using house current or installing batteries.

To use house current

Connect the supplied AC power cord to the **AC IN** jack on the back of this unit firmly, and plug it into a wall outlet.

To use batteries

Insert six R14 (size C) batteries (not supplied) into the battery compartment.

Note

- When you operate the unit on batteries, you cannot turn on the unit using the remote.

When to replace the batteries


When the batteries are weak, the **OPR/BATT** indicator will become faint, and the sound may be distorted. (For details about battery life, see "Specifications.")

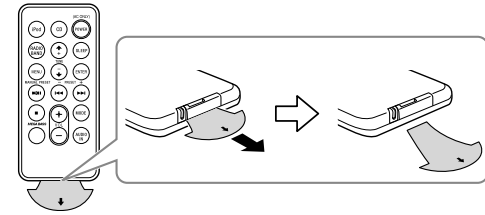
Notes

- Battery performance depends on manufacturer and type, and battery life may be shorter, especially when used in low temperature.
- Be sure to observe the correct polarity when installing the batteries.
- Do not use different types of batteries at the same time.
- When you replace the batteries, replace them all with new ones.
- Before you replace the batteries, be sure to remove any CD from the unit.
- To use the unit on battery power, disconnect the AC power cord from the unit.

Remote control

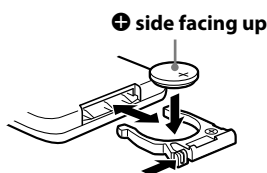
Before using the supplied remote for the first time, remove the insulation film.

Aim the remote at the  (Remote sensor) of the unit.



When to replace the battery

With normal use, the battery (CR2025) should last for about 6 months. When the remote can no longer operate the unit, replace the battery with a new one.

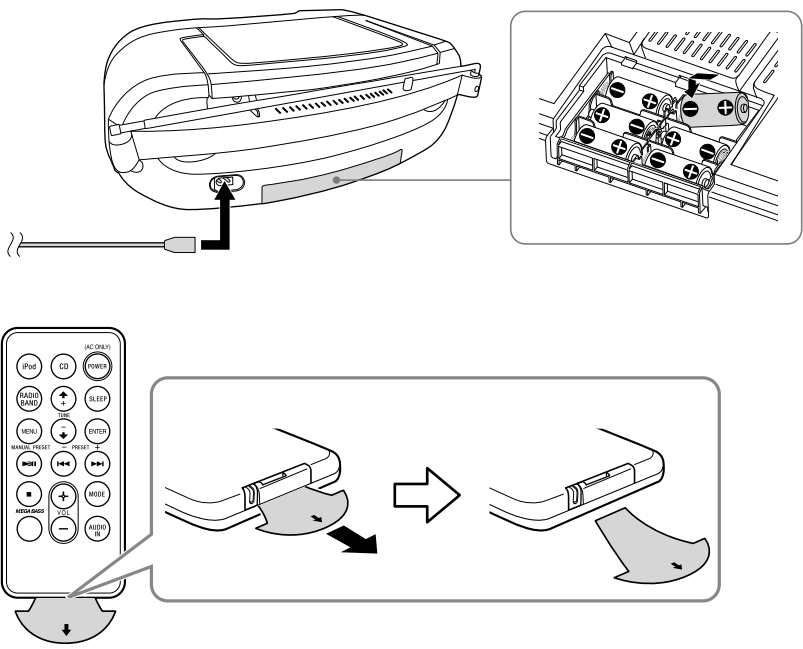


Note

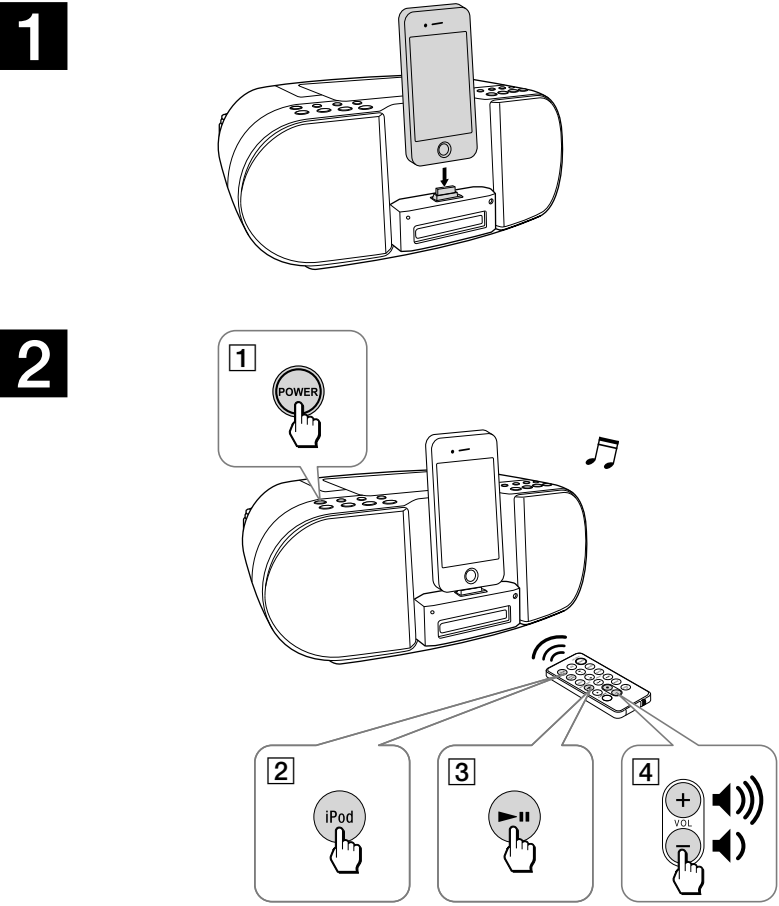
- If you are not going to use the remote for a long time, remove the battery to avoid any damage that may be caused by leakage or corrosion.

Continued on the reverse side

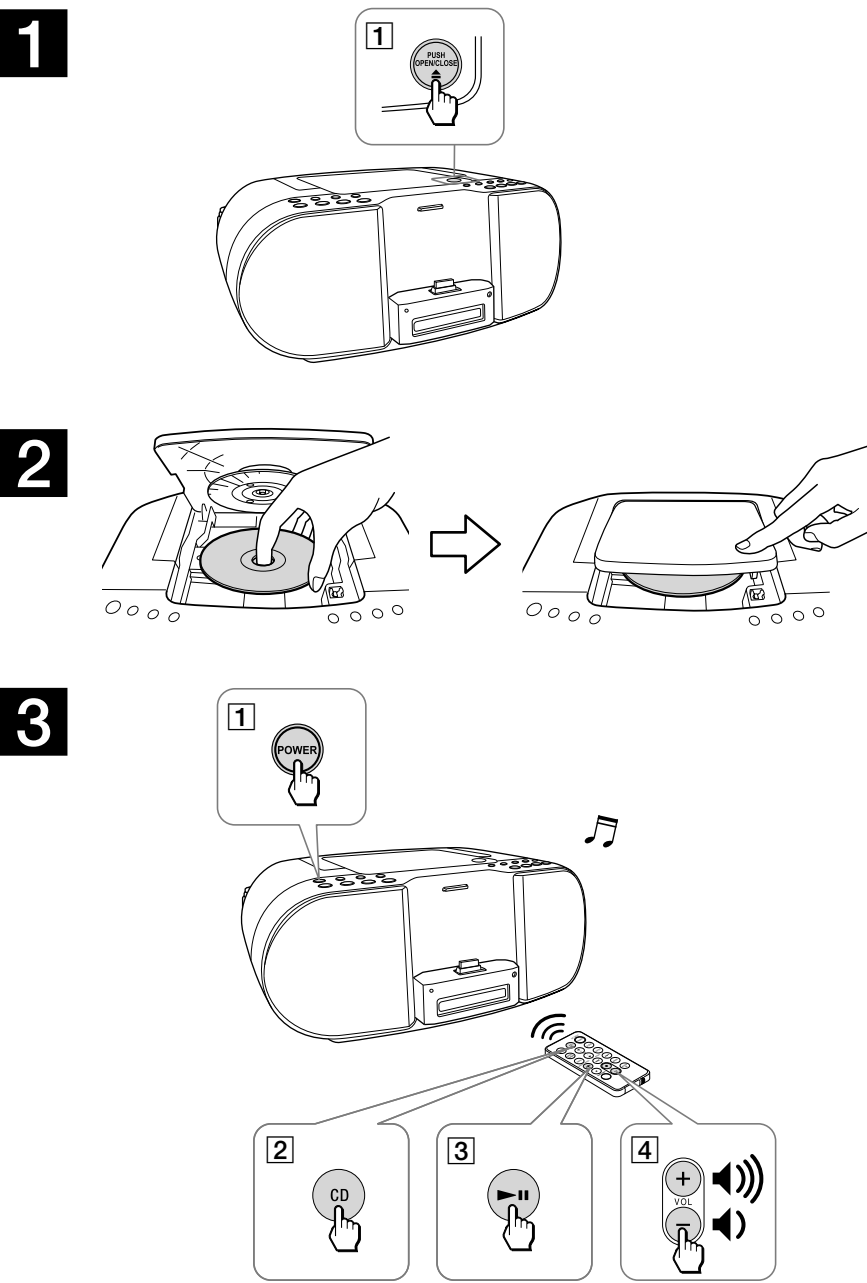
Startup Guide



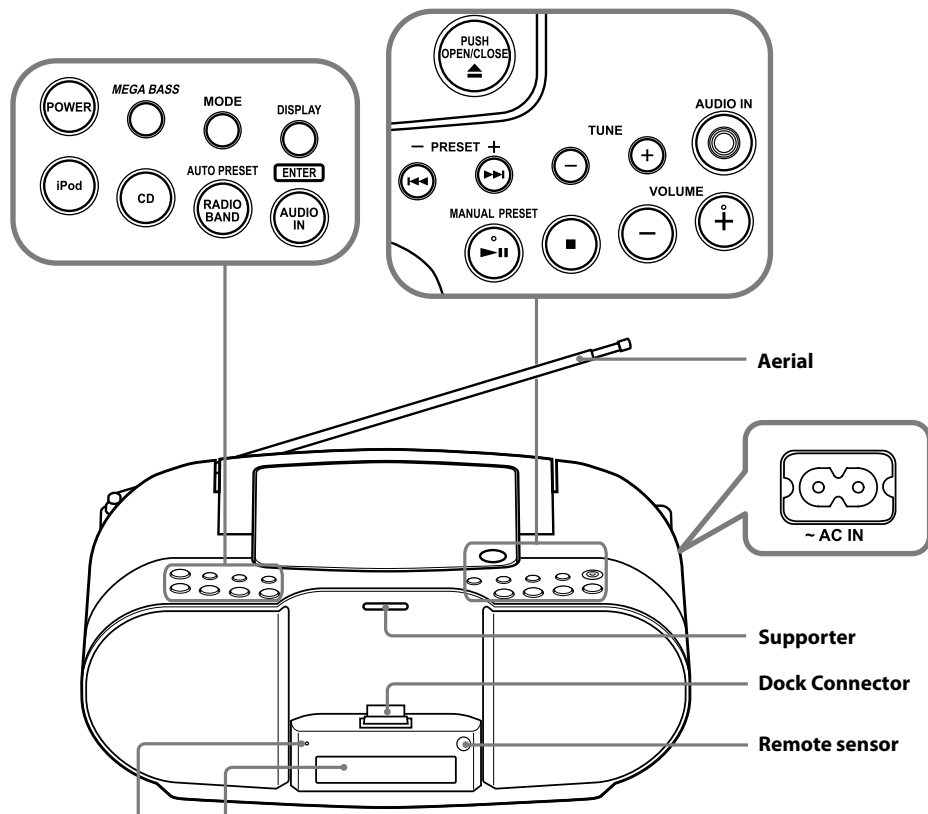
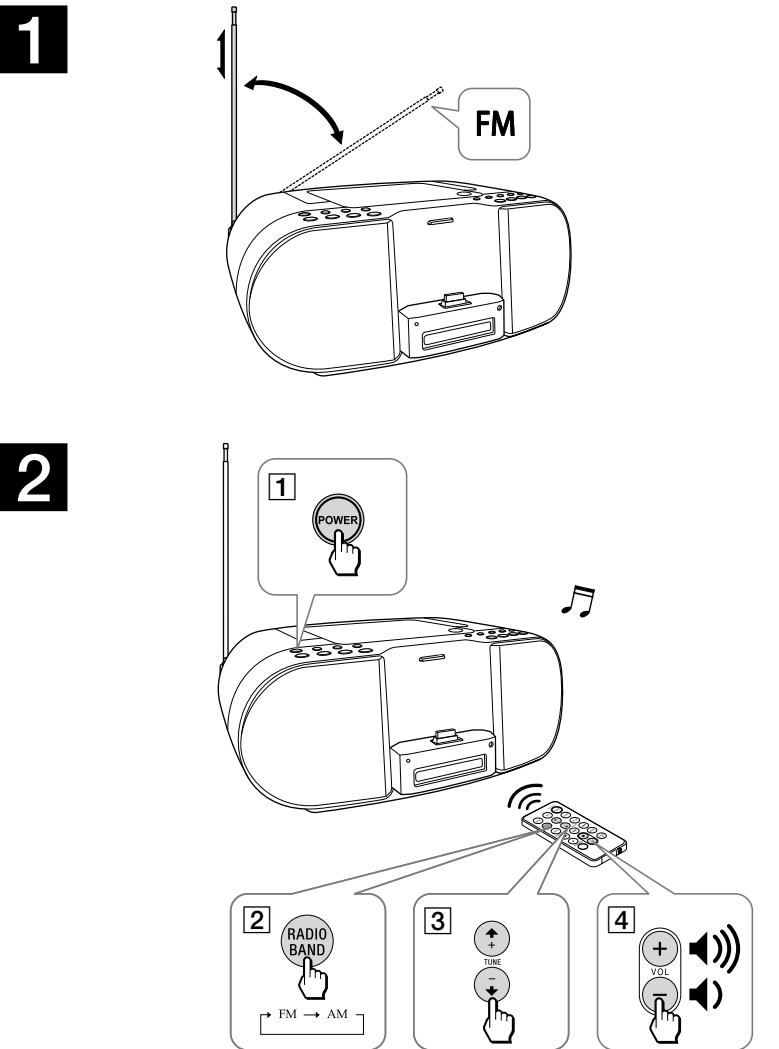
iPod/iPhone



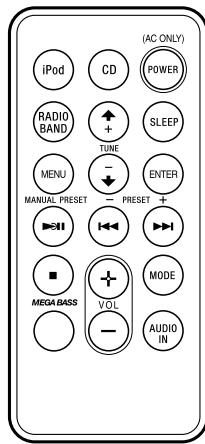
CD



Radio



OPR/BATT indicator Display

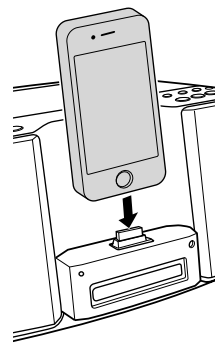


VOLUME + (VOL + on the remote) and ►II buttons have a tactile dot.

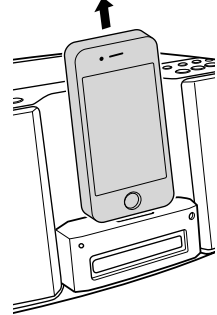
Operations

How to handle an iPod

To set an iPod



To remove an iPod



- Notes**
- An iPod in a case or cover can be set in this unit. However, if the case or cover interferes with the connection, remove the case or cover before setting the iPod on the Dock Connector.
 - When placing or removing the iPod, hold it at the same angle as the Dock Connector on the unit. Do not pull the iPod forward too far.
 - When placing or removing the iPod, hold the unit securely.
 - Do not twist or bend the iPod, as this may result in connector damage.
 - Remove the iPod when transporting it; otherwise, a malfunction may result.
 - If the iPod does not reach the supporter on the front of the unit, attach the supplied cushion below the supporter.

To turn the unit on/off

Press **POWER**.
The OPR/BATT indicator lights up when the unit is turned on.

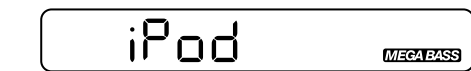
Tip
• There is no backlight for the display.

Adjusting the volume

Press **VOLUME +/-** (VOL +/- on the remote).

Operating an iPod

- Set an iPod on the Dock Connector. For details, see "How to handle an iPod."
- Press **POWER** and then press **iPod**. "iPod" appears in the display.



- Press **►II**. The iPod begins to play back. If the iPod does not start playing back, operate directly on the iPod. You can operate the connected iPod by the unit or the buttons on the iPod.

To	Press
Pause playback	►II To resume play, press it again.
Stop playback	■
Go to the next track	►►I
Go back to the previous track	◀◀'
Locate a point while listening to the sound	►►I (forward) or ◀◀' (backward) while playing and hold it until you find the desired point.
Select a menu (remote only)	Press MENU , and ↑ or ↓ to select a menu, and then press ENTER .
Go back to the previous menu (remote only)	Press MENU .

* During playback, this operation returns to the beginning of the current track. To go back to the previous track, press twice.

- Notes**
- If a pop-up message appears on the display of the iPod touch or iPhone, see "About App."
 - Some operations may differ or may not be available between different models of iPod.
 - If the battery of the iPod is extremely low, charge it for a while before operation.
 - Sony cannot accept responsibility in the event that data recorded to an iPod is lost or damaged when using the iPod connected to this unit.
 - For details of environmental conditions for operating the iPod, check the website of Apple Inc.

To remove the iPod

For details, see "How to handle an iPod."

To charge an iPod (AC only)

You can use the unit as a battery charger for an iPod when the power is supplied by the AC power source. Charging begins when the iPod is connected to the unit. The charging status appears in the display on the iPod. For details, see the user's guide of the iPod.

Playing a CD

- Press **▲ PUSH OPEN/CLOSE** and place a disc with the label side up in the CD compartment. To close the CD compartment, press **▲ PUSH OPEN/CLOSE**.
- Press **POWER**.
- Press **CD**.
- Press **►II**.

The unit plays all the tracks once.



To	Press
Pause playback	►II To resume play, press it again.
Stop playback	■
Go to the next track	►►I
Go back to the previous track	◀◀'
Locate a point while listening to the sound	►►I (forward) or ◀◀' (backward) while playing and hold it until you find the desired point.
Locate a point while observing the display	►►I (forward) or ◀◀' (backward) while paused and hold it until you find the desired point then press ►II.

Remove the CD **▲ PUSH OPEN/CLOSE**
* During playback, this operation returns to the beginning of the current track. To go back to the previous track, press twice.

- Note**
- A music CD format other than CD-DA, (such as MP3/WMA files), cannot be played by this unit.

To select a CD play mode

Press **MODE** until "1," "◀," "SHUF," "SHUF" and "◀," "PGM," or "PGM" and "◀" appear in the display. Then proceed as follows:

To Select	Select	Then do this
Repeat a single track	"1"	Press ◀◀' or ►►I to select the track that you want to repeat, then press ►II.
Repeat all tracks	"◀"	Press ►II.
Shuffle play	"SHUF"	Press ►II.
Repeat tracks in random order	"SHUF" and "◀"	Press ►II.
Program play	"PGM"	Press ◀◀' or ►►I then press DISPLAY/ENTER (ENTER on the remote) for the tracks (up to 20) you want to program in the order you want. Then press ►II.



Repeat "PGM" and Press ◀◀' or ►►I then press **DISPLAY/ENTER** (ENTER on the remote) for the tracks (up to 20) you want to program in the order you want. Then press ►II.

To cancel the selected play mode
Press **MODE** repeatedly until the selected mode disappears from the display.

To check the programed track and playing order in the display
To check the order of tracks before playing, press **DISPLAY/ENTER** (ENTER on the remote). Every time you press the button, the track number appears in the display.

To change the current program
Press **■** once if the CD is stopped and twice if the CD is playing. The current program will be erased. Then create a new program following the programming procedure.

- Notes**
- If you try to program 21 tracks or more, "FULL" will appear in the display.
 - You can play the same program again, since the program is saved until you open the CD compartment.

Listening to the radio

- Press **POWER**.
- Press **RADIO BAND** repeatedly. Each time you press the button, the radio band toggles between AM and FM.

Other useful functions

Reinforcing the bass sound

Press **MEGA BASS**. "MEGA BASS" appears in the display. To return to normal sound, press the button again.

Falling asleep to music

This function is only available by using the remote.

- Play the music source you want.
- Press **SLEEP** repeatedly to set the sleep timer duration. Each time you press the button, the indication changes as follows:
60 → 90 → 120 → OFF → 10 → 20 → 30

The minute number blinks. Then the unit goes back to the previous display. The sleep timer is set and the unit goes off after the duration you set.

To cancel the sleep function

Press **POWER** to turn off the power, or press **SLEEP** on the remote repeatedly to set the sleep timer to "OFF" in step 2.

About App

A dedicated Dock App for iPod touch/iPhone available at Apple App Store. Search for "D-Sappli" and download the free App to find out more about the functions.

- Features**
- D-Sappli includes various timer functions: Alarm, Music Play Timer and Sleep Timer.
 - You can set up to 10 alarms, using songs in iPod or Preset Sound in D-Sappli for the alarm sound. Music Play Timer allows you to play/pause desired music at a desired time. Sleep Timer allows you to specify a time at which to stop music playback. Alarm, Music Play Timer and Sleep Timer work in combination with the power supply of the unit.
 - Alarm, Music Play Timer and Sleep Timer are available only when D-Sappli is activated.
 - D-Sappli can display a list of Radio Preset Stations programmed in this unit. You can rename the Radio Preset Stations, and change their preset numbers on the D-Sappli. Preset numbers and order will also be changed accordingly in the unit.
 - D-Sappli also includes a clock display enlarge feature.

- Notes**
- If the App to link with this unit is not downloaded to the iPod touch/iPhone, a pop-up message prompting you to download D-Sappli may appear repeatedly. Deactivate the App's link function to stop the pop-up message.
 - To deactivate the App's link function: Connect the AC power source, and then press **POWER** to turn off the unit. Remove the iPod touch/iPhone from the Dock Connector. While holding down ►II, also press and hold **POWER** on the unit for at least 2 seconds. "OFF" appears in the display to show that the App's link function has been deactivated.
 - To re-activate the App's link function, repeat the above steps. ("ON" appears in the display to show that the App's link function has been activated.)

- Hold down **TUNE +** or **-** until the frequency digits begin to change in the display. The unit automatically scans the radio frequencies and stops when it finds a clear station. If you cannot tune in a station, press **TUNE +** or **-** repeatedly to change the frequency step by step. When an FM stereo broadcast is received, **STEREO** appears.

Notes

- If you touch or operate an iPod connected to this unit while listening to AM/FM, noise may occur. Avoid touching or operating the iPod in this case.
- If you are listening to the radio with an iPhone connected to the unit, interference with radio reception may occur. Remove the iPhone in this case.

To improve the reception

- Extend the aerial to its full length and reorient it for best FM reception.

- Reorient the unit itself to improve AM reception.

Note

- Adjust the direction of the aerial by holding the bottom of it. The aerial can be damaged if you move the aerial with excessive force.

To set monaural sound if stereo reception is poor

The unit automatically switches between stereo and monaural output, depending on reception conditions. However, if stereo reception is unstable, you can manually set for monaural output to improve the sound. Press **MODE** to show "MONO" in the display. (To resume stereo reception, press **MODE** again to show "ST" in the display.)

To preset radio stations

You can store radio stations into the unit's memory. You can preset up to 30 radio stations, 20 for FM and 10 for AM in any order.

- Press **POWER**.
- Press **RADIO BAND** to select the band.
- Hold down **AUTO PRESET/RADIO BAND** (**RADIO BAND** on the remote) for 2 seconds until "AUTO" flashes in the display.
- Press **DISPLAY/ENTER** (**ENTER** on the remote). The stations are stored in memory from the lower frequencies to the higher ones.

If a station cannot be preset automatically

You need to preset a station with a weak signal manually.

- Press **POWER**.
- Press **RADIO BAND** to select the band.
- Tune in a station you want using **TUNE +** or **-**.
- Press **MANUAL PRESET** to enter manual preset mode.
- Press **PRESET +** or **-** until the preset number you want for the station flashes in the display.
- Press **DISPLAY/ENTER** (**ENTER** on the remote). The new station replaces the old one.

Tips

- The preset radio stations remain in memory even if you unplug the AC power cord or remove the batteries.
- To cancel the preset number setting, press **MANUAL PRESET** instead of **ENTER** in step 6.

To play preset radio stations

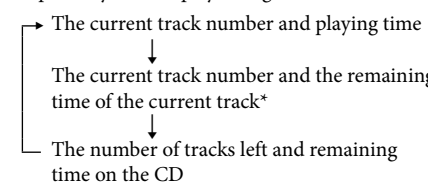
- Press **POWER**.
- Press **RADIO BAND** to select the band.
- Press **PRESET +** or **-** to tune in the stored station.

Using the display

CD mode

To check the total track number and playing time
In stop mode, press **DISPLAY/ENTER** on the unit.

To check the remaining time
In play/pause mode, press **DISPLAY/ENTER** on the unit repeatedly. The display changes as follows:



Radio mode

To display the frequency or a preset station number
Each time you press **DISPLAY/ENTER** on the unit, the display changes to the frequency or a preset station number.

Connecting optional components

You can enjoy the sound from an optional component, such as a portable digital music player, through the speakers of this unit. Be sure to turn off the power of each component before making any connections. For details, refer to the instruction manual of the component to be connected.

- Connect the **AUDIO IN** jack to the line output jack of the portable digital music player or other component using an audio connecting cable (not supplied).
- Press **POWER** to turn the unit on.
- Turn the connected component on.
- Press **AUDIO IN** and start playback on the connected component.

"AUDIO IN" appears in the display, and the sound from the connected component is output from the speakers of this unit.

Notes

- The necessary type of audio connecting cable depends on the optional component. Be sure to use the correct type of cable.
- If the volume level is low, adjust the volume of the unit first. If the volume is still too low, adjust the volume of the connected component.