

Micro HI-FI Component System

GB Operating Instructions



©2011 Sony Corporation Printed in China

CMT-G1P/G1BiP

http://www.sony.net/



WARNING

To reduce the risk of fire, do not cover the ventilation opening of the apparatus with newspapers, tablecloths, curtains, etc. Do not place the naked flame sources such as lighted candles on the apparatus.

To reduce the risk of fire or electric shock, do not expose this apparatus to dripping or splashing, and do not place objects filled with liquids, such as vases, on the apparatus.

Do not install the appliance in a confined space, such as a bookcase or built-in cabinet.

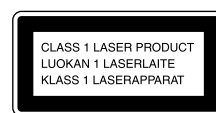
As the main plug is used to disconnect the unit from the mains, connect the unit to an easily accessible AC outlet. Should you notice an abnormality in the unit, disconnect the main plug from the AC outlet immediately.

Do not expose batteries or apparatus with battery-installed to excessive heat such as sunshine, fire or the like.

The unit is not disconnected from the mains as long as it is connected to the AC outlet, even if the unit itself has been turned off.

CAUTION

The use of optical instruments with this product will increase eye hazard.



This appliance is classified as a CLASS 1 LASER product. This marking is located on the rear exterior.

Notice for customers: the following information is only applicable to equipment sold in countries applying EU directives.

The manufacturer of this product is Sony Corporation, 1-7-1 Konan Minato-ku Tokyo, 108-0075 Japan. The Authorized Representative for EMC and product safety is Sony Deutschland GmbH, Hedelfinger Strasse 61, 70327 Stuttgart, Germany. For any service or guarantee matters please refer to the addresses given in separate service or guarantee documents.

Disposal of Old Electrical & Electronic Equipment (Applicable in the European Union and other European countries with separate collection systems)

This symbol on the product or on its packaging indicates that this product shall not be treated as household waste. Instead it shall be handed over to the applicable collection point for the recycling of electrical and electronic equipment. By ensuring this product is disposed of correctly, you will help prevent potential negative consequences for the environment and human health, which could otherwise be caused by inappropriate waste handling of this product. The recycling of materials will help to conserve natural resources. For more detailed information about recycling of this product, please contact your local Civic Office, your household waste disposal service or the shop where you purchased the product.

Applicable accessory: Remote commander



Disposal of waste batteries (applicable in the European Union and other European countries with separate collection systems)
This symbol on the battery or on the packaging indicates that the battery provided with this product shall not be treated as household waste. On certain batteries this symbol might be used in combination with a chemical symbol. The chemical symbols for mercury (Hg) or lead (Pb) are added if the battery contains more than 0.0005% mercury or 0.004% lead.

By ensuring these batteries are disposed of correctly, you will help prevent potentially negative consequences for the environment and human health which could otherwise be caused by inappropriate waste handling of the battery. The recycling of the materials will help to conserve natural resources.

In case of products that for safety, performance or data integrity reasons require a permanent connection with an incorporated battery, this battery should be replaced by qualified service staff only. To ensure that the battery will be treated properly, hand over the product at end-of-life to the applicable collection point for the recycling of electrical and electronic equipment. For all other batteries, please view the section on how to remove the battery from the product safely. Hand the battery over to the applicable collection point for the recycling of waste batteries. For more detailed information about recycling of this product or battery, please contact your local Civic Office, your household waste disposal service or the shop where you purchased the product.

Excessive sound pressure from earphones and headphones can cause hearing loss.

Note on DualDiscs

A DualDisc is a two sided disc product which mates DVD recorded material on one side with digital audio material on the other side. However, since the audio material side does not conform to the Compact Disc (CD) standard, playback on this product is not guaranteed.

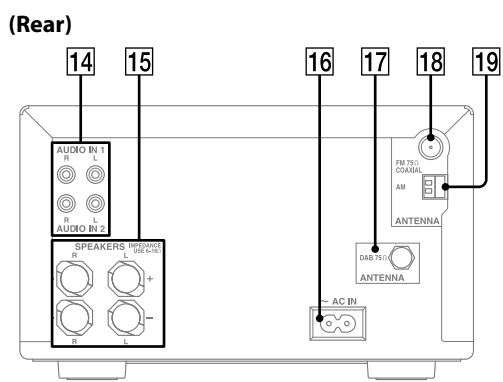
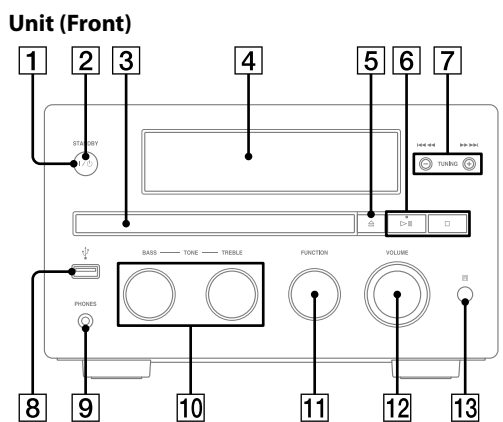
Music discs encoded with copyright protection technologies

This product is designed to playback discs that conform to the Compact Disc (CD) standard. Recently, various music discs encoded with copyright protection technologies are marketed by some record companies. Please be aware that among those discs, there are some that do not conform to the CD standard and may not be playable by this product.

License and Trademark Notice

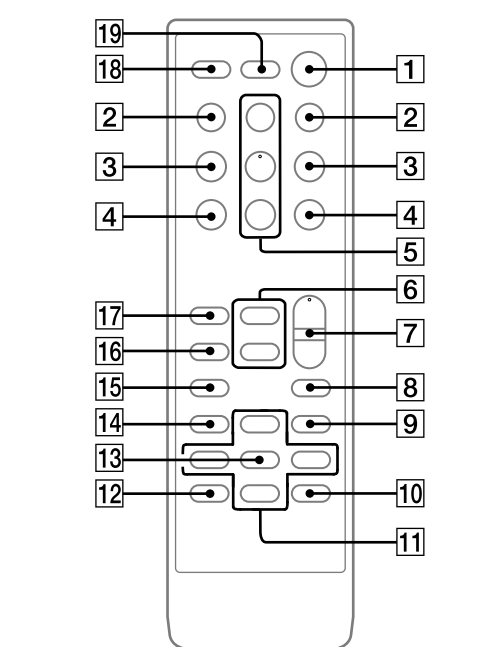
- iPhone, iPod, iPod classic, iPod nano, and iPod touch are trademarks of Apple Inc., registered in the U.S. and other countries.
- MPEG Layer-3 audio coding technology and patents licensed from Fraunhofer IIS and Thomson.
- Windows Media is either a registered trademark or trademark of Microsoft Corporation in the United States and/or other countries.
- This product is protected by certain intellectual property rights of Microsoft Corporation. Use or distribution of such technology outside of this product is prohibited without a license from Microsoft or an authorized Microsoft subsidiary.
- All other trademarks and registered trademarks are of their respective holders. In this manual, ™ and ® marks are not specified.

Location of Controls



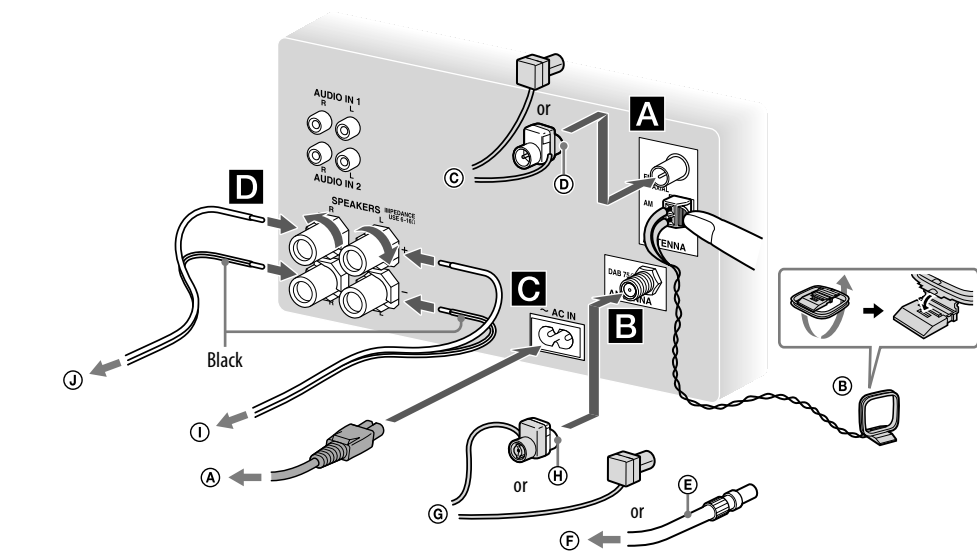
- I/⏻ (power) button
- STANDBY indicator
- Disc tray
- Display
- ▲ (open) button
- Playback buttons (▶/⏮/■)
- TUNING +/- buttons
- ◀/▶ (rewind/fast forward) buttons
- ◀/▶ (USB) port
- PHONES jack
- BASS/TREBLE knobs
- FUNCTION knob
- VOLUME knob
- Remote sensor
- AUDIO IN 1/2 jacks
- SPEAKERS terminals
- AC IN jack
- ANTENNA DAB 75 Ω terminal (CMT-G1BiP only)
- ANTENNA FM 75 Ω COAXIAL terminal
- ANTENNA AM terminal

Remote



- I/⏻ (power) button
- ◀/▶ (go back/go forward) buttons +/- (tuning) buttons
- ◀/▶ (rewind/fast forward) buttons
- ◻ +/- (select folder) buttons
- Playback buttons (▶/⏮/■)
- FUNCTION +/- buttons
- VOLUME +/- buttons
- EQ button
- TIMER MENU button
- TOOL MENU button
- ♫/♪/♬ buttons
- RETURN button
- ENTER button
- CLEAR button
- TUNER MEMORY button
- REPEAT/FM MODE button
- PLAY MODE/TUNING MODE button
- SLEEP button
- DISPLAY button

Getting Started



- Ⓐ To wall outlet
- Ⓑ Loop antenna
- Ⓒ FM lead antenna (Extend it horizontally.)
- Ⓓ Connect brown side.
- ① To left speaker
- Ⓔ 75-ohm coaxial cable with F male type connector (not supplied) (CMT-G1BiP only)
- Ⓔ To DAB external antenna (not supplied) (CMT-G1BiP only)
- Ⓖ DAB lead antenna (Extend it horizontally.) (CMT-G1BiP only)
- Ⓢ Connect white side.
- ① To left speaker
- Ⓔ To right speaker

A Antennas

Find a location and an orientation that provide good reception, and then set up the antenna. Keep the antennas away from the speaker cords and the AC power cord to avoid picking up noise.

B DAB antenna (CMT-G1BiP only)

With a DAB external antenna (not supplied), you can obtain higher DAB/DAB+ broadcast sound quality. We recommend that you use the DAB lead antenna (supplied) only temporarily until you install a DAB external antenna.

C Power

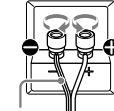
Connect the AC power cord to a wall outlet. When you press I/⏻, the system turns on.

D Speakers

First, remove the cover attached to the end of the speaker cord.



Connect the speaker cords to the SPEAKERS terminals on the unit. Connect the other end of the speaker cords to the terminals on the speakers as shown below. Fasten the speaker cord using the screws of the SPEAKERS terminals firmly.

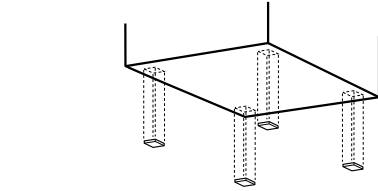


Notes on cleaning the speakers

- Wipe it with soft dry cloth (non-starched). (Do not ever use a scrubbing brush or sponge.)
- To maintain the continued polish of the cabinet, do not wipe it vigorously right from the start, but first brush away dust with a soft brush or a duster before you wipe it with soft dry cloth.
- If it is stained with oil or fingerprints, breath on the surface and wipe it with soft dry cloth.
- If the stain is tough to remove, wipe it with soft cloth washed in lukewarm soapy water. (Do not use a neutral detergent.)
- Do not use thinner, benzene, alcohol, or hair liquid, which may damage the surface.
- Be careful not to scrape the cabinet.
- Be careful not to drop a lit cigarette or match, as it may damage the surface.

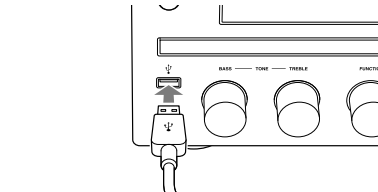
To attach the speaker pads

Attach the speaker pads (supplied) to the bottom of the speakers to prevent from slipping.



To use the iPod/iPhone

Connect the iPod/iPhone to the ◀ (USB) port using a USB cable supplied with your iPod/iPhone.



Operations

Playing a CD/MP3 disc

- Select the CD function.
Press FUNCTION +/- repeatedly.
- Place a disc.
Press ▲ on the unit, and place a disc with the label side up on the disc tray.
To close the disc tray, press ▲ on the unit.
- Start playback.
Press ▶.

Other operations

To	Press
Pause playback	⏮ To resume play, press the button again.
Stop playback	■
Select a track or MP3 disc	◻ +/- repeatedly.
Select a track or file	◀/▶ To fast-forward or fast-rewind, hold down the button at the desired point.
Find a point in a track or file	Hold down ◀/▶ during playback, and release the button at the desired point.
Select Repeat Play	REPEAT/FM MODE repeatedly until "REP" or "REP1" appears.

To change the play mode

Press PLAY MODE/TUNING MODE repeatedly while the player is stopped. You can select the Normal Play mode (◻) for all MP3 files in the folder on the disc, Shuffle Play mode ("SHUF" or ◻SHUF* for folder shuffle), or Program Play mode ("PGM").
* When playing a CD-DA (audio) disc, ◻ (SHUF) Play performs the same operation as normal (SHUF) Play.

Note on Repeat Play

"REP1" indicates that a single track or file is repeated until you stop playback.

Notes on the Shuffle Play mode

- When the Shuffle Play mode is set to "SHUF" the system shuffle-plays all tracks or files on the disc. When the Shuffle Play mode is set to ◻SHUF the system shuffle-plays all tracks or files in the selected folder.
- When you turn off the system, the selected Shuffle Play mode ("SHUF" or ◻SHUF) is cleared and the play mode returns to the Normal Play mode (◻).

Notes on playing MP3 discs

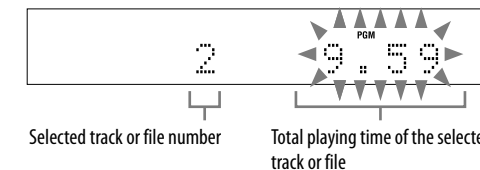
- Do not save other types of tracks or files, or unnecessary folders on a disc that has MP3 files.
- Folders that have no MP3 files are skipped.
- MP3 files are played back in the order that they are recorded onto the disc.
- The system can only play MP3 files that have a file extension of ".mp3".
- Even when file name has the ".mp3" file extension, if the actual file differs, playing this file may generate a loud noise which could damage the speaker system and the system may malfunction.
- The maximum number of:
 - folders is 255 (including the root folder).
 - MP3 files is 511.
 - MP3 files and folders that can be contained on a single disc is 512.
 - folder levels (the tree structure of files) is 8.
- Compatibility with all MP3 encoding/writing software, recording device, and recording media cannot be guaranteed. Incompatible MP3 discs may produce noise or interrupted sound or may not play at all.

Notes on playing multisection discs

- If the first session on the disc is a CD-DA session, the other sessions on the disc cannot be recognized regardless of the session format; only CD-DA tracks in the first session can be played back.
- If the session format for the first session is CD-ROM and the following sessions are recorded in the same format, the system will continue to play back MP3 files accordingly in multiple sessions until the system encounters another session recorded in a different format.

Creating your own program (Program Play)

- Select the CD function.
Press FUNCTION +/- repeatedly.
- Select the play mode.
Press PLAY MODE repeatedly until "PGM" appears while the player is stopped.
- Select the desired track or file number.
Press ◀/▶ repeatedly until the desired track or file number appears.
When programming audio files, press ◻ +/- repeatedly to select the desired folder, and then select the desired file.



- Program the selected track or file.
Press ENTER to enter the selected track or file.
- Repeat steps 3 through 4 to program additional tracks or files, up to a total of 25 tracks or files.
- To play your program of tracks or files, press ▶.
The program remains available until you remove the disc from the disc tray or unplug the AC power cord. To play the same program again, press ▶.

To cancel Program Play
Press PLAY MODE/TUNING MODE repeatedly until "PGM" disappears while the player is stopped.

To delete the last track or file of the program
Press CLEAR while the player is stopped.

To view program information
Press DISPLAY repeatedly while the player is stopped.

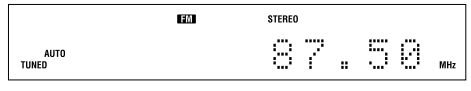
Listening to the radio

The DAB/DAB+ tuning is only available for CMT-G1BiP.

- Select "TUNER DAB", "TUNER FM" or "TUNER AM".
Select a track or chapter of audiobook/podcast.
Press FUNCTION +/- repeatedly.
- Perform tuning.

For automatic scanning

Press PLAY MODE/TUNING MODE repeatedly until "AUTO" appears, and then press +/- . Scanning stops automatically when a station is tuned in, and "TUNED" and "STEREO" (for stereo programs only) light up in the display.



If "TUNED" does not light up and the scanning for an FM or AM station does not stop, press ■ to stop scanning, then perform manual tuning (below). When you tune in a DAB/DAB+ station or an FM station that provides the RDS services, information such as the service name or station name is provided by broadcasts.

For manual tuning (FM/AM band only)

Press PLAY MODE/TUNING MODE repeatedly until "AUTO" and "PRESET" disappear, and then press +/- repeatedly to tune in the desired station.

Notes on DAB/DAB+ stations

- When tuning in a DAB/DAB+ station, it may take a few seconds before you hear any sound.
- Primary service is automatically received when secondary service ends.
- Do not carry the system with an iPod/iPhone connected to it. Doing so may cause a malfunction.
- Before disconnecting the iPod/iPhone, pause playback.

Tip
To reduce static noise on a weak FM stereo station, press FM MODE repeatedly until "MONO" appears to turn off stereo reception.

Running the DAB Automatic Scan manually

- Select "TUNER DAB".
Press FUNCTION +/- repeatedly.
- Press TOOL MENU to start the DAB Automatic Scan. "Init Scan?" and "Push ENTER" appear.
- Press ENTER to perform scanning.
Scanning begins. The scanning progress is indicated by advancing squares (■■■■■). Depending on the DAB/DAB+ services available in your area, scanning may take a few minutes.



When scanning is complete, a list of available services is created.

- If your country or region does not support DAB/DAB+ broadcast, "No Service" appears.
- This procedure clears all previously stored presets.
- Before unplugging the DAB lead antenna or FM lead antenna, make sure the system is turned off to save your own DAB/DAB+ settings.

Presetting radio stations

- Tune in the desired station.
- Press TUNER MEMORY to select the tuner memory mode.
If another station is already assigned to the selected preset number, the station is replaced by the new station.
- Press +/- repeatedly to select the desired preset number.
When programming audio files, press ◻ +/- repeatedly to select the desired folder, and then select the desired file.
When programming the desired file, press ◻ +/- repeatedly to select the desired file.
- Press ENTER to store the station.
You can preset up to 20 DAB, 20 FM and 10 AM stations.
- Repeat steps 1 through 4 to store other stations.
- To call up a preset radio station, press PLAY MODE/TUNING MODE repeatedly until "PRESET" appears, and then press +/- repeatedly to select the desired preset number.

Notes on the play mode

- When you select the Shuffle Play mode "SHUF" the system shuffle-plays all audio files in the connected USB device in random order. The Shuffle Play mode may play the same file repeatedly.
- When the play mode is set to the Folder Play mode, "REP1" is not available.
- When the play mode is set to the Shuffle Play mode, the repeat function is not available.
- When the repeat play is set, the Shuffle Play mode is not available. When the repeat play is set to "REP1", the Folder Play mode is not available.
- When you turn off the system, the selected Shuffle Play mode ("SHUF") is cleared and the play mode returns to the Normal Play mode.

Playing the iPod/iPhone

- Select the USB function.
Press FUNCTION +/- repeatedly.
- Connect the iPod/iPhone to the ◀ (USB) port using the USB cable supplied with your iPod/iPhone.
- Start playback.
Press ▶.

To control the iPod/iPhone

To	Press
Pause playback	⏮ To resume play, press the button again.
Stop playback	■ To resume play, press ▶+1. To cancel resume play, press ■ again*2.
Select a folder	◻ +/- repeatedly.
Select a file	◀/▶ To fast-forward or fast-rewind, hold down the button.
Find a point in a track or chapter of audiobook/podcast	Hold down ◀/▶ during playback, and release the button at the desired point.
Choose the selected item	ENTER.
Scroll up/down the iPod menus	♫/♬.
Return to the previous menu or select a menu	TOOL MENU or RETURN.

To use the system as a battery charger

You can use the system as a battery charger for an iPod/iPhone when the system is on. Connect the iPod/iPhone to the ◀ (USB) port using the USB cable supplied with your iPod/iPhone. The charge status appears in the iPod/iPhone display. For details, see the user's guide of your iPod/iPhone.

To stop charging an iPod/iPhone

Remove the iPod/iPhone. Turning off the system also stops charging the iPod/iPhone.

Notes

- If the battery of the iPod/iPhone is empty, the system may not recognize it. In such a case, recharge it with a computer, etc. then connect it to the system.
- The performance of the system may be varying, depending on the specifications of your iPod/iPhone.
- Do not carry the system with an iPod/iPhone connected to it. Doing so may cause a malfunction.
- Before disconnecting the iPod/iPhone, pause playback.
- Hold down ◀/▶ to fast-forward (fast-rewind) while playing video if ◀/▶ does not work.
- When the iPhone is connected to the system and you receive a call during playback, playback will pause and you can take an incoming call.
- To change the volume level, use VOLUME +/- . The volume level does not change even if you adjust it on the iPod/iPhone.
- To use an iPod/iPhone, refer to the user's guide of your iPod/iPhone.
- Sony cannot accept responsibility in the event that data recorded to iPod/iPhone is lost or damaged when using an iPod/iPhone with this system.

Playing a file of the USB device

The audio format that can be played back on this system is MP3/WMA*/AAC*.
* Files with DRM (Digital Rights Management) copyright protection or files released from an online music store cannot be played on this system. If you try to play one of these files, the system plays the next unprotected audio file.

Check the websites below for the information about compatible USB devices.
For customers in Europe:
<http://support.sony-europe.com/>

- Select the USB function.
Press FUNCTION +/- repeatedly.
- Connect the USB device to the ◀ (USB) port.
- Start playback.
Press ▶.

Other operations

To	Press
Pause playback	⏮ To resume play, press the button again.
Stop playback	■ To resume play, press ▶+1. To cancel resume play, press ■ again*2.
Select a folder	◻ +/- repeatedly.
Select a file	◀/▶ To fast-forward or fast-rewind, hold down the button at the desired point.
Find a point in a track or chapter of audiobook/podcast	Hold down ◀/▶ during playback, and release the button at the desired point.
Select Repeat Play	REPEAT/FM MODE repeatedly until "REP" or "REP1" appears.

*1 When playing a VBR MP3/WMA file, the system may resume playback from a different point.
*2 Resume play returns to the top folder.

To change the play mode

Press PLAY MODE/TUNING MODE repeatedly. You can select the Normal Play mode (playback in sequence of all files on the USB device), Folder Play mode (◻) for all files in the specified folder on the USB device), or Shuffle Play mode ("SHUF").

Notes on the display information
If you select "REP" in the Normal Play mode, the system repeats playback of all audio files stored in the USB device.
If you select "REP" in the Folder Play mode, the system repeats playback of all audio files in the selected folder.

Notes

When the USB cable connection is necessary, connect the USB cable supplied with the USB device to be connected. See the operation manual supplied with the USB device to be connected for details on the operation method.

- It may take about 10 seconds before "Reading" appears depending on the type of USB device connected.
- Do not connect the system and the USB device through a USB hub.
- When the USB device is inserted, the system reads all the files on the USB device. If there are many folders or files on the USB device, it may take a long time to finish reading the USB device.
- With some connected USB devices, after an operation is performed, there may be a delay before it is performed by this system.
- Compatibility with all encoding/writing software cannot be guaranteed. If audio files on the USB device were originally encoded with incompatible software, those files may produce noise or interrupted sound, or may not be played back at all.
- This system cannot play audio files on the USB device in the following cases:
 - when the total number of audio files in a folder exceeds 100.
 - when the total number of audio files on a USB device exceeds 10000.
 - when the total number of folders on a USB device exceeds 100 (including the "ROOT" folder and empty folders).
- These numbers may vary depending on the file and folder structure. Do not save other types of files or unnecessary folders on the USB device that has audio files.

- This system displays the track number as "----" when the number of audio files on a USB device exceeds 1000.
- The system can play back to a depth of 8 folders only.
- This system does not necessarily support all the functions provided in a connected USB device.
- Folders that have no audio files are skipped.
- The audio formats that you can listen to with this system are as follows:

–MP3: file extension ".mp3"
–WMA: file extension ".wma"
–AAC: file extension ".m4a"
Note that even when file name has the correct file extension, if the actual file differs, the system may produce noise or may malfunction.

To use the system as a battery charger

You can use the system as a battery charger for the USB devices that have a rechargeable function when the system is on.

The charging begins when the USB device is connected to the ⏻ (USB) port. The charge status appears on the USB device display. For details, see the user's guide of your USB device.

Using optional audio components

- Prepare the sound source.

Connect additional audio component to the AUDIO IN 1 or AUDIO IN 2 jack on the unit using an audio analog cord (not supplied).

- Turn down the volume.

Press VOLUME −.

- Select the AUDIO IN 1 or AUDIO IN 2 function.

Press FUNCTION +/− repeatedly.

- Start playback.

Start playback of the connected component and adjust the volume.

Note

The system may enter the Standby mode automatically if the volume level of the connected component is too low. Adjust the component's volume accordingly. See "To turn off the Automatic Standby function."

Adjusting the sound

To	Press
Adjust the volume	VOLUME +/− .
Set the sound or effect	EQ repeatedly to select "BASS" or "TREBLE," and then press ◀/▶ to adjust the level.

Changing the display

To	Press
Change information on the display*1	DISPLAY repeatedly when the system is on.
Change Display mode (see below.)	DISPLAY repeatedly when the system is off.*2

*1 For example, you can view the CD/MP3 disc information or the USB device information, such as;

- track or file number
- track or file name ("♪")
- artist name ("👤")
- album or folder name ("📁")

–total playing time and total number of tracks on the CD-DA disc (only when the Normal Play mode is selected and the player is stopped).

–total number of folders (albums) on the MP3 disc (only when the Normal Play mode is selected and the player is stopped).

– volume label if it exists on the MP3 disc (only when the Normal Play mode is selected and the player is stopped).

*2 The STANDBY indicator on the unit lights up when the system is off.

The system offers the following display modes.

Display mode	When the system is off *1,
Power Saving mode*2	The display is turned off to save power. The timer and clock continue to operate.
Clock*3	The clock is displayed.

*1 The STANDBY indicator on the unit lights up when the system is off.

*2 You cannot set the clock in the Power Saving mode.

*3 The clock display automatically turns to the Power Saving mode after 8 seconds.

Troubleshooting

- Make sure the AC power cord and speaker cords are correctly and firmly connected.

- Find your problem in the checklist below, and take the indicated corrective action.

 If the issue persists, contact your nearest Sony dealer.

<p>If the STANDBY indicator flashes</p> <p>Immediately unplug the AC power cord, and check the following items.</p> <ul style="list-style-type: none">• Are the + and − speaker cords short-circuited? • Is anything blocking the ventilation holes of the system? <p>After the STANDBY indicator stops flashing, reconnect the AC power cord, and turn on the system. If the issue persists, contact your nearest Sony dealer.</p>
--

General

The system does not turn on.

- Is the AC power cord plugged in?

The system has entered the Standby mode unexpectedly.

- This is not a malfunction. The system enters the Standby mode automatically in about 30 minutes when there is no operation or audio signal output. See "To turn off the Automatic Standby function."

The clock setting or the Play Timer operation has been cancelled unexpectedly.

- If about a minute elapses with no operation, the clock setting or the Play Timer setting is cancelled automatically. Perform the operation again from the beginning.

There is no sound.

- Are the + and − speaker cords short-circuited?
- Are you using only the supplied speakers?
- Is anything blocking the ventilation holes of the system?
- The specified station may have temporarily stopped broadcast.

Sound comes from one channel, or the left and right volumes are unbalanced.

- Place the speakers as symmetrically as possible.
- Connect only the supplied speakers.

Severe hum or noise.

- Move the system away from sources of noise.
- Connect the system to a different wall outlet.
- Install a noise filter (not supplied) to the AC power cord.

The remote does not function.

- Remove any obstacles between the remote and the remote sensor on the unit, and position the unit away from fluorescent lights.
- Point the remote at the remote sensor on the unit.
- Move the remote closer to the system.

The STANDBY indicator remains lit after unplugging the AC power cord.

- The STANDBY indicator may not turn off immediately after unplugging the AC power cord. The indicator will turn off after about 40 seconds. This is not a malfunction.

CD/MP3 player

The sound skips, or the disc will not play.

- Wipe the disc clean, and replace it.
- Move the system to a location away from vibration (for example, on top of a stable stand).
- Move the speakers away from the system, or place them on separate stands. At high volume, speaker vibration may cause the sound to skip.

Play does not start from the first track.

- Return to the Normal Play mode by pressing PLAY MODE/TUNING MODE repeatedly until both "PGM" and "SHUF" disappear.

Starting playback takes more time than usual.

- The following discs can increase the time it takes to start playback;
 - a disc recorded with a complicated tree structure.
 - a disc recorded in multiseSSION mode.
 - a disc that has not been finalized (a disc to which data can be added).
 - a disc that has many folders.

iPod/iPhone

There is no sound.

- Make sure the iPod/iPhone is connected securely.
- Make sure the iPod/iPhone is playing music.
- Make sure the iPod/iPhone is updated with the latest software. If not, update the iPod/iPhone before using with the system.
- Adjust the volume.

The sound is distorted.

- Make sure the iPod/iPhone is connected securely.
- Turn down the volume.
- Set the "EQ" setting of the iPod/iPhone to "Off" or "Flat."

The iPod/iPhone does not function.

- If the battery of the iPod/iPhone is empty, it may not work with this system. In such a case, recharge it with a computer, etc. then connect it to the system.
- Shut down any other iOS applications running on the iPod/iPhone. For details, refer to the operation manual supplied with the iPod/iPhone.
- Make sure the iPod/iPhone is connected securely.
- Make sure the iPod/iPhone is updated with the latest software. If not, update the iPod/iPhone before using with the system.
- Because the operation of the system and the iPod/iPhone are different, you may not operate the iPod/iPhone using buttons on the remote or unit. In this case, use the control buttons on the iPod/iPhone.

The iPod/iPhone cannot be charged.

- If the battery of the iPod/iPhone is empty, the system may not be able to charge it even if you connect it to the system. In such a case, recharge it with a computer, etc. then connect it to the system.
- Make sure the iPod/iPhone is connected securely.
- You can use the system as a battery charger for iPod/iPhone only when the system is on.

The ring volume of the iPhone does not change.

- Adjust the ring volume on the iPhone.

USB device

Are you using a supported USB device?

- If you connect an unsupported USB device, the following problems may occur. Check the information on the websites about compatible USB devices with URLs listed under "Playing a file of the USB device."
 - The USB device is not recognized.
 - File or folder names are not displayed on this system.
 - Playback is not possible.
 - The sound skips.
 - There is noise.
 - A distorted sound is output.

There is no sound.

- The USB device is not connected correctly. Turn off the system, then reconnect the USB device.

There is noise, skipping, or distorted sound.

- Turn off the system, then reconnect the USB device.
- The music data itself contains noise, or the sound is distorted. Noise may have been entered when creating music data due to the conditions of the computer. Create the music data again.
- The bit rate used when encoding the files was low. Send files encoded with higher bit rates to the USB device.

“Reading” is displayed for an extended time, or it takes a long time before playback starts.

- The reading process can take a long time in the following cases.
 - There are many folders or files on the USB device.
 - The file structure is extremely complex.
 - The memory capacity is excessive.
 - The internal memory is fragmented.

Erroneous display

- Send the music data to the USB device again, as the data stored in the USB device may have been corrupted.
- The character codes that can be displayed by this system are numbers and alphabets only. Other characters are not displayed correctly.

The USB device is not recognized.

- Turn off the system and reconnect the USB device, then turn on the system.
- Check the information on the websites about compatible USB devices with URLs listed under "Playing a file of the USB device."
- The USB device does not work properly. Refer to the USB device operation manual for how to deal with this problem.

Play does not start.

- Turn off the system and reconnect the USB device, then turn on the system.
- Check the information on the websites about compatible USB devices with URLs listed under "Playing a file of the USB device."
- Press ▶ to start playback.

Play does not start from the first track.

- Set the play mode to the Normal Play mode.

Files cannot be played back.

- The audio file does not have the extension ".mp3", ".wma" or ".m4a."
- The data is not stored in MP3/WMA/AAC format.
- USB storage devices formatted with file systems other than FAT16 or FAT32 are unsupported.*
- If you use a partitioned USB storage device, only files on the first partition can be played.
- Files that are encrypted or protected by passwords, etc. cannot be played back.

* This system supports FAT16 and FAT32, but some USB storage devices may not support all of these FAT. For details, see the operation manual of each USB storage device or contact the manufacturer.

Tuner

Severe hum or noise, or stations cannot be received. (“TUNED” or “STEREO” flashes on the display.)

- Connect the antenna properly.
- Find a location and an orientation that provide good reception, and then set up the antenna again.
- Keep the antennas away from the speaker cords and the AC power cord to avoid picking up noise.
- Turn off nearby electrical equipment.

DAB/DAB+ radio station is not received properly (CMT-G1BiP only).

- Check all antenna connections, then perform the DAB Automatic Scan procedure (see "Reception of DAB/DAB+ radio station").
- The current DAB/DAB+ service may not be available. Press +/− to select a different service.
- If you have moved to another area, some services/ frequencies may have changed and you may not be able to tune into your usual broadcast. Perform the DAB Automatic Scan procedure to re-register the content of broadcasts. (Performing this procedure clears all previously stored presets.)

The DAB/DAB+ broadcast has been interrupted (CMT-G1BiP only)

- Change the location of the system or adjust the orientation of the antenna to increase the indicated value of the signal quality. Refer to "Changing the display" for further details on the signal quality.

To change the AM tuning interval

The AM tuning interval is factory-preset to 9 kHz (or 10 kHz for some areas; this function is not available on the European model).

Use buttons on the unit to change the AM tuning interval.

- Tune in any AM station, and then turn off the system.
- Press I/◁ while holding down TUNING +. All the AM preset stations are erased. To reset the interval to the factory preset, repeat the procedure.

To reset the system to factory settings

If the system still does not operate properly, reset the system to factory settings. Use buttons on the unit to reset the unit to its factory default settings.

- Disconnect and reconnect the AC power cord, and then turn on the system.
- Press and hold ■ and I/◁ on the unit for 2 seconds or longer until "RESET" appears. All user-configured settings, such as preset radio stations, timer, and the clock, are deleted.

To turn off the Automatic Standby function

This system is equipped with an Automatic Standby function. With this function, the system enters the Standby mode automatically in about 30 minutes when there is no operation or audio signal output. By default, the Automatic Standby function is turned on. Use buttons on the unit to turn off the Automatic Standby function.

Press and hold I/◁ while the system is on for 2 seconds or longer, until "AUTO STBY OFF" appears. To turn on the function, repeat the procedure until "AUTO STBY ON" appears.

Notes

- "AUTO STBY" appears in the display for 2 minutes before the system enters the Standby mode.
- The Automatic Standby function is invalid for the tuner function (FM/AM/DAB), even when you have enabled it.
- The system may not enter the Standby mode automatically in the following cases;
 - while an audio signal is being detected.
 - during playback of audio tracks or files.
 - while the preset Play Timer or Sleep Timer is in process.

Messages

CD Over : You have reached the end of the disc while pressing ▶ during playback or pause.

Error : The USB device could not be recognized or an unknown device is connected.

LOCKED : The disc tray does not open. Contact your nearest Sony dealer.

No Disc : No USB device is connected or the connected USB device has been stopped.

No Disc: There is no disc in the player, or you have loaded a disc that cannot be played.

No Memory : No memory media is inserted in the USB device. Or non-formatted device (exFAT, etc.) is inserted in the USB device.

No Preset (DAB/DAB+ only) : There is no stored preset station.

No Service (DAB/DAB+ only) : There is no supported DAB/DAB+ broadcast in your country or region.

No Step: All of the programmed tracks have been erased.

No Text (DAB/DAB+ only) : There is no text information in the received service.

No Track : Playable file on the USB device is not loaded in the system.

Not in Use : You tried to perform a specific operation under conditions where that operation is prohibited.

Not Supported : An unsupported USB device or iPod is connected or the iPod/iPhone whose battery is empty is connected.

Protect : You tried to exceed the allowed input of the sound level to the amplifier section. This message is displayed along with the sound interruption when you turn up the volume during playback of a CD with a recording level that is too loud, or when you play back a CD which contains input signals that are too large. Adjust the volume using the VOLUME or BASS/TREBLE to turn off the message. We recommend a volume level where the sound is not blasting out of the speakers. If the "PROTECT" message does not disappear, make sure the speaker cord is connected firmly.

Push STOP!: You pressed PLAY MODE/TUNING MODE during playback in the CD function.

Step Full! : You tried to program more than 25 tracks or files (steps).

TIME NG! : The Play Timer start and end times are set to the same time.

Precautions

Discs that this system CAN play

- Audio CD
- CD-R/CD-RW (audio data/MP3 files)

Discs that this system CANNOT play

- CD-ROM
- CD-R/CD-RW other than those recorded in music CD format or MP3 format conforming to ISO9660 Level 1/Level 2, Joliet
- CD-R/CD-RW recorded in multisession that have not ended by "closing the session"
- CD-R/CD-RW of poor recording quality, CD-R/CD-RW that have scratches or are dirty, or CD-R/CD-RW recorded with an incompatible recording device
- CD-R/CD-RW which is finalized incorrectly
- Discs containing files other than MPEG 1 Audio Layer-3 (MP3) files
- Discs of non-standard shape (for example, heart, square, star)
- Discs that have adhesive tape, paper, or sticker attached to them
- Rental or used discs with attached seals where the glue extends beyond the seal
- Discs that have labels printed using ink that feels tacky when touched

Notes on discs

- Before playing, wipe the disc with a cleaning cloth from the center out to the edge.
- Do not clean discs with solvents, such as benzine, thinner, or commercially available cleaners or anti-static spray intended for vinyl LPs.
- Do not expose discs to direct sunlight or heat sources such as hot air ducts, nor leave it in a car parked in direct sunlight.

On safety

- Completely disconnect the AC power cord (mains lead) from the wall outlet (mains) if it is not going to be used for an extended period of time. When unplugging the unit, always grip the plug. Never pull the cord itself.
- Should any solid object or liquid get into the system, unplug the system, and have it checked by qualified personnel before operating it again.
- The AC power cord can be changed only by a qualified service facility.

On placement

- Do not place the system in an inclined position or in locations that are extremely hot, cold, dusty, dirty, or humid or lacking adequate ventilation, or subject to vibration, direct sunlight or a bright light.
- Be careful when placing the unit or speakers on surfaces that have been specially treated (for example, with wax, oil, polish) as staining or discoloration of the surface may result.
- If the system is brought directly from a cold to a warm location or is placed in a very damp room, moisture may condense on the lens inside the CD player, and cause the system to malfunction. In this situation, remove the disc, and leave the system turned on for about an hour until the moisture evaporates.

On heat buildup

- Heat buildup on the unit during operation is normal and is not cause for alarm.
- Do not touch the cabinet if it has been used continuously at a high volume because the cabinet may have become hot.
- Do not obstruct the ventilation holes.

On the speaker system

This speaker system is not magnetically shielded, and the picture on nearby TV sets may become magnetically distorted. In this situation, turn off the TV, wait 15 to 30 minutes, and turn it back on.

If there is no improvement, move the speakers far away from the TV.

Cleaning the cabinet

Clean this system with a soft cloth slightly moistened with a mild detergent solution. Do not use any type of abrasive pads, scouring powder, or solvents, such as thinner, benzine, or alcohol.

Specifications

General
Power requirements:
AC 230 V, 50/60 Hz
Power consumption: 50 watts
Dimensions (W/H/D) (incl. speakers):

Approx. 220 mm × 133 mm × 335 mm
Mass (exc. speakers): Approx. 5.3 kg

Supplied accessories: Remote Commander (1), R03 (Size AAA) batteries (2),

AC power cord (1), FM lead antenna (1), AM loop antenna (1), DAB lead antenna (1) (CMT-G1BiP only), Speaker cords (2) , Speaker pads (8)

Design and specifications are subject to change without notice.

<div> • Standby power consumption: 0.5 W</div>
--