

# FM/AM CD Clock Radio

Operating Instructions

ICF-CD3iP

# DREAM MACHINE

Dream Machine is a trademark of Sony Corporation.



No Power No Problem is a trademark of Sony Corporation.

©2008 Sony Corporation Printed in China

http://www.sony.net/

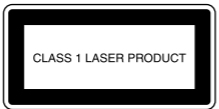
## WARNING

**To reduce the risk of fire or electric shock, do not expose this apparatus to rain or moisture.**

To reduce the risk of fire, do not cover the ventilation of the apparatus with newspapers, tablecloths, curtains, etc. And do not place lighted candles on the apparatus. To reduce the risk of fire or electric shock, do not expose this apparatus to dripping or splashing, and do not place objects filled with liquids, such as vases, on the apparatus.

Do not install the appliance in a confined space, such as a bookcase or built-in cabinet.

As the main plug is used to disconnect the unit from the mains, connect the unit to an easily accessible AC outlet. Should you notice an abnormality in the unit, disconnect the main plug from the AC outlet immediately.



### WARNING

- Danger of explosion if battery is incorrectly replaced. Replace only with the same or equivalent type.
- Replace the battery for the clock backup with a Sony CR2032 lithium battery, and the battery for the remote commander with a Sony CR2025 lithium battery. Use of another battery may present a risk of fire or explosion.
- Battery may explode if mistreated. Do not recharge, disassemble or dispose of in fire.
- Do not expose the batteries (battery pack or batteries installed) to excessive heat such as sunshine, fire or the like for a long time.
- Dispose of used battery promptly. Keep away from children.

“CAUTION-CLASS 1M INVISIBLE LASER RADIATION WHEN OPEN AND INTERLOCKS DEFEATED DO NOT VIEW DIRECTLY WITH OPTICAL INSTRUMENTS”

## Features

- Brightness control (High/Mid/Low)
- Supplied audio cable for digital music players
- Built-in CD player with CD-R/RW playback function
- FM/AM 2-band digital tuner
- 30 Station Presets (20 FM, 10 AM)
- No Power No Problem alarm system to keep the clock and the alarm operating during a power interruption with a CR2032 battery installed
- Extendable Snooze time from 10 to 60 min

## Precautions

- Play the unit on the power source specified in “Specifications”.
- To disconnect the AC power cord (mains lead), pull it out by the plug, not the cord.
- The unit is not disconnected from the AC power source (mains) as long as it is connected to the wall outlet, even if the player itself has been turned off.
- The nameplate and important information concerning safety are located on the bottom exterior.
- Since a strong magnet is used for the speaker, keep personal credit cards using magnetic coding or spring-wound watches away from the unit to prevent possible damage from the magnet.
- Do not leave the unit in a location near a heat source such as a radiator or airduct, or in a place subject to direct sunlight, excessive dust, mechanical vibration, or shock.
- Allow adequate air circulation to prevent internal heat build-up. Do not place the unit on a surface (a rug, a blanket, etc.) or near materials (a curtain) which might block the ventilation holes.
- Should any solid object or liquid fall into the unit, unplug the unit and have it checked by qualified personnel before operating it any further.
- To clean the casing, use a soft cloth dampened with a mild detergent solution.
- Never touch the wire of the external FM aerial during a thunderstorm. Furthermore, immediately disconnect the AC power cord from the radio.

### NOTES ON LITHIUM BATTERY

- Wipe the battery with a dry cloth to assure a good contact.
- Be sure to observe the correct polarity when installing the battery.

- Do not hold the battery with metallic tweezers, otherwise a short-circuit may occur.
- If you have any questions or problems concerning your unit, please consult your nearest Sony dealer.

## Troubleshooting

Should any problem persist after you have made the following checks, consult your nearest Sony dealer.

**The clock flashes “AM 12:00” due to a power interruption.**

- The battery is low. Replace the battery. Remove the old battery and install a new one.

**The CD, radio, iPod or buzzer alarm does not sound at the preset alarm time.**

- Check that “ALARM A” or “ALARM B” is properly displayed.

**The CD, radio or alarm of iPod is activated but no sound comes on at the preset alarm time.**

- Has **VOLUME** been adjusted?
- **The CD player does not operate.**
- Did you close the CD compartment lid?
- Did you insert the disc correctly?
- The disc should be inserted with the label side up.
- Dusty or defective disc — Clean the disc with an optional cleaning cloth. Wipe the disc from the center out.
- Take out the CD and leave the CD compartment open for about an hour to allow condensation to evaporate.

- There is no sound from the iPod.**
- Make sure the iPod is securely connected.
  - Adjust the **VOLUME**.
- The iPod cannot be operated with this unit.**
- Make sure the iPod is securely connected.
- The iPod cannot be charged.**
- Make sure the iPod is securely connected.

## Specifications

**CD player section**  
System  
Compact disc digital audio system

**Laser diode properties**  
Emission duration: Continuous  
Laser output: Less than 44.6 µW(This output is the value measurement at a distance of 200 mm from the objective lens surface on the optical pick-up block with 7 mm aperture.)

**Number of channels**  
2

**Frequency response**  
20 - 20 000 Hz +1/-2 dB

**Wow and flutter**  
Below measurable limit

**Section for iPod**  
DC out: 5V  
MAX: 500mA (AC only)

**Radio section**  
**Frequency range**

Band	Frequency	Channel step
FM	87.5 - 108 MHz	0.05 MHz
AM	531 - 1 611 kHz	9 kHz

**General**  
**Time display**  
12-hour system  
**Speaker**  
Approx. 3.8 cm (1 1/2 inches) dia. 20 Ω  
**Input**  
AUDIO IN jack (ø 3.5 mm stereo minijack)  
**Power output**  
1 W + 1 W (at 10% harmonic distortion)  
**Power requirements**  
230 V AC, 50 Hz  
For clock back up: 3 VDC one CR2032 battery  
**Dimensions**  
Approx. 145 × 156.8 × 115.8 mm (w/h/d)  
(5 3/4 × 6 1/4 × 4 5/8 inches) not including projecting parts and controls  
**Mass**  
Approx. 1.3 kg (2 lb 13 oz) including power supply unit  
**Supplied accessories**

- Remote commander (1)
- AM loop aerial (1)
- Audio connecting cable (1)
- Universal Dock Adapter for iPhone (1)
- Universal Dock Adapter for iPhone 3GS & iPhone 3G (1)
- Universal Dock Adapter for iPhone 4S & iPhone 4 (1)
- Lithium battery CR2032 (1)

Design and specifications are subject to change without notice.

## Compatible iPod/iPhone models

Compatible iPod/iPhone models are as follows. Update your iPod/iPhone to use the latest software before you use it.

iPod touch (4th generation)  
iPod touch (3rd generation)  
iPod touch (2nd generation)  
iPod touch (1st generation)  
iPod nano (6th generation)\*  
iPod nano (5th generation)  
iPod nano (4th generation)  
iPod nano (3rd generation)  
iPod nano (2nd generation)  
iPod nano (1st generation)  
iPod with video  
iPod with color display  
iPod with click wheel  
iPod classic  
iPod mini  
iPhone 4S  
iPhone 4  
iPhone 3GS  
iPhone 3G  
iPhone

\* The iPod nano (6th generation) cannot be controlled by the remote when the command of “MENU” “★,” “\*” and “ENTER” is pressed.

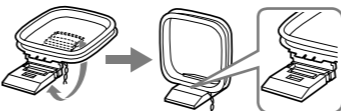
### Notes

- In these Operating Instructions, “iPod” is used as a general reference to functions of iPod on the iPod and iPhone, unless otherwise specified by the text or illustrations.
- The connector of the unit is for sole use for iPod. When you use devices that do not match with the connector, connect to the **AUDIO IN** terminal of this unit with the supplied audio connecting cable.
- Sony cannot accept responsibility in the event that data recorded to iPod is lost or damaged when using an iPod connected to this unit.

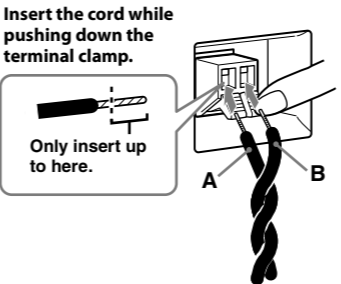
## Connecting the aerial

**To connect the AM loop aerial**  
The shape and the length of the aerial is designed to receive AM signals. Do not dismantle or roll up the aerial.

- 1 Remove only the loop part from the plastic stand.
- 2 Set up the AM loop aerial.



- 3 Connect the cords to the AM aerial terminals.  
Cord (A) or cord (B) can be connected to either terminal.



- 4 Make sure the AM loop aerial is connected firmly by pulling softly.

**Adjusting the AM loop aerial**  
Find a place and an orientation that provide good reception.

- Do not place the AM loop aerial near the unit or other AV equipment, as noise may result.

**Tip**  
Adjust the direction of the AM loop aerial for best AM broadcast sound.

## Improving the reception

**FM:** Extend the FM wire aerial fully to increase reception sensitivity.

**AM:** Connect the supplied AM loop aerial to the unit. Rotate the aerial horizontally for optimum reception.

**Tip**  
If the FM broadcast is noisy, press **MODE** to turn off “ST” in the display. The radio becomes clearer although the sound becomes monaural.

- Notes on radio reception**
- Keep digital music players or mobile phones away from the AM loop aerial or the FM aerial, as this may lead to interference of reception.
  - When you are listening to the radio with an iPhone connected to the unit, interference with radio reception may occur.
  - When you are listening to the radio while charging an iPod, interference with radio reception may occur.

## Preparing the remote commander

Before using the card remote commander for the first time, remove the insulation film. (See Fig. **A**-①)

### When to replace the battery

With normal use, the battery (CR2025) should last for about six months. When the remote commander no longer operates the unit, replace the battery with a new one. (See Fig. **A**-②)

- Notes**
- Do not charge the battery.
  - When you are not going to use the remote commander for a long time, remove the battery to avoid any damage caused by leakage and corrosion.

## About the backup battery

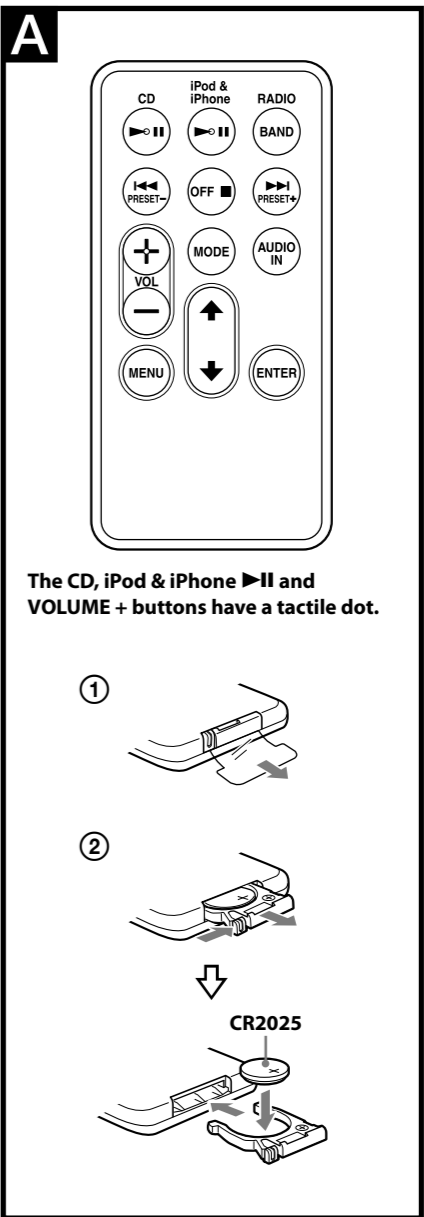
To keep good time, as a backup power source, this unit needs one CR2032 battery (supplied), in addition to the house current. The battery keeps the clock operating in the event of a power interruption.

### Knowing when to replace the battery

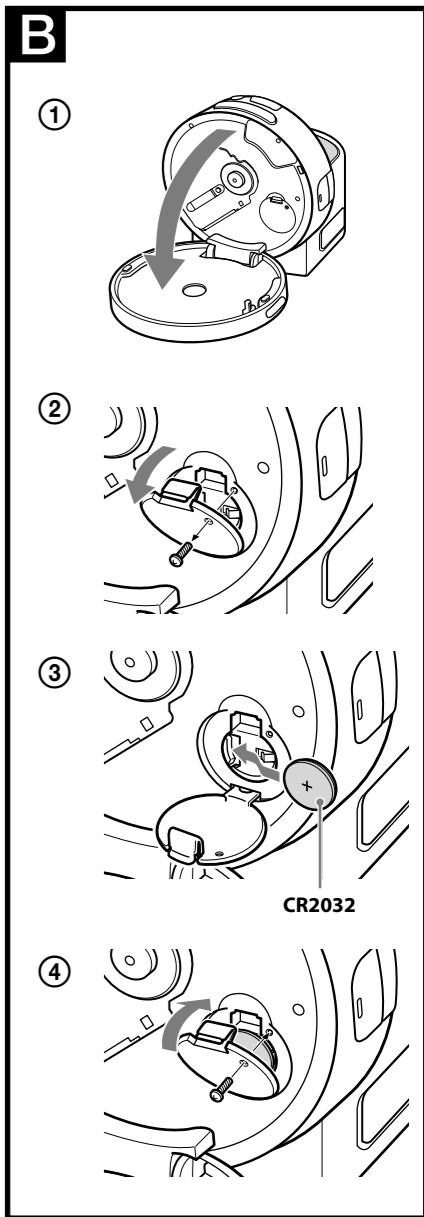
When the battery becomes weak, “☺” appears in the display.  
If a power interruption occurs while the battery is weak, the current time and alarm will be erased. Replace the battery with a Sony CR2032 lithium battery. Use of another battery may cause a fire or explosion.

### Installing and replacing the backup battery

- 1 Open the CD compartment lid. (See Fig. **B**-①)
- 2 Keep the AC plug connected to the AC outlet and use a screwdriver to remove the screw that secures the battery holder at the CD compartment. (See Fig. **B**-②)
- 3 Push the exhausted battery out from the CD compartment of the battery holder and insert a new battery with the **+** side facing up. (See Fig. **B**-③)
- 4 Insert the battery holder back into the unit and secure it with the screw. (See Fig. **B**-④)
- 5 Press **CD, iPod&iPhone, RADIO BAND, AUDIO IN or SNOOZE/DATE/SLEEP OFF** to turn “☺” off in the display.



**The CD, iPod & iPhone ►II and VOLUME + buttons have a tactile dot.**



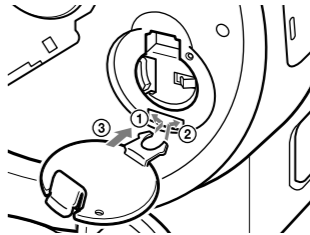
### If the time in the display is incorrect after the battery is changed (Reset)

Press the Reset button with a pointed device. The Reset button is in the small hole located in the battery compartment.

**Note**  
When you replace the battery, do not disconnect the plug from the AC outlet. Otherwise, the calendar, current time, alarm and station presets will be erased.

**Battery Warning**  
If the unit is to be left unplugged for a long time, remove the battery to avoid undue battery discharge and damage to the unit from battery leakage.  
**WARNING**  
There is a danger of explosion if the battery is incorrectly replaced. Replace only with the same or equivalent type recommended by the equipment manufacturer.

**If the battery compartment lid comes off**  
The battery compartment lid is designed to come off when opened with excessive force. To put it back on, see the illustration.



- 1 Insert the left hook of the lid into the left hole in the unit.
- 2 Insert the right hook into the right hole.
- 3 Confirm the lid is securely attached.

## Setting the clock

- 1 Plug in the unit.
- 2 Press and hold **CLOCK** for at least 2 seconds.  
The year starts to flash in the display.
- 3 Press **ALARM TIME SET +** or **-** repeatedly to set the year.
- 4 Press **CLOCK**.
- 5 Repeat steps 3 and 4 to set the month, the day, hour, and minute, and then press **CLOCK**.  
And the seconds start incrementing from zero.

- Notes**
- If you do not press a button for about 1 minute while setting the clock, the clock setting will be cancelled.
  - A calendar is installed in this unit. When the date is set, a day of the week is automatically displayed.  
SUN = Sunday, MON = Monday, TUE = Tuesday, WED = Wednesday, THU = Thursday, FRI = Friday, SAT = Saturday

### To display the year and date

Press **SNOOZE/DATE/SLEEP OFF** once for the date, and within about 3 seconds press it again for the year.  
The display shows the date or year for about 3 seconds and then changes back to the current time.

### To change the display to the summer time (daylight saving time) indication

Press and hold **CLOCK** and **BRIGHTNESS/SUMMER TIME** at the same time for at least 2 seconds.  
“\*” is appears in the display and the time indication changes to the summer time (daylight saving time).  
To deactivate the summer time (daylight saving time) adjustment, press and hold **CLOCK** and **BRIGHTNESS/SUMMER TIME** at the same time for at least 2 seconds again.

## Setting the brightness of the display

Three levels of brightness are available by pressing **BRIGHTNESS/SUMMER TIME**.



