

SONY

3-862-170-92(1)

Cassette-Corder

Operating Instructions (reverse side)

TCM-333/323

Sony Corporation ©1998 Printed in China



About This Manual

The instructions in this manual are for TCM-333 and TCM-323. Before you start reading, check your model number. TCM-333 is the model used for illustration purposes. Any differences in operation are clearly indicated in the text, for example, "TCM-333 only".

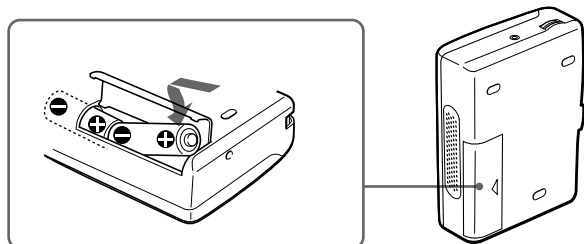
▶ Getting Started

Preparing a Power Source

Choose one of the following power sources.

Dry Batteries

Make sure that nothing is connected to the DC IN 3V jack (TCM-333 only).

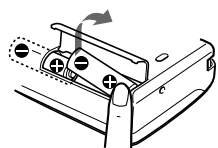


- 1 Open the battery compartment lid.
- 2 Insert two size R6 (AA) batteries (not supplied) with correct polarity and close the lid.

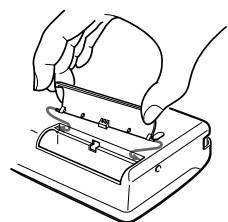
Notes

- Do not charge a dry battery.
- Do not use a new battery with an old one.
- Do not use different types of batteries.
- When you do not use the unit for a long time, remove the batteries to avoid any damage caused by battery leakage and subsequent corrosion.
- (TCM-333 only) Dry batteries will not be expended when another power source is connected.

To take out the batteries

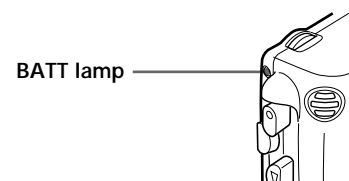


To attach the battery compartment lid if it is accidentally detached



When to replace the batteries

Replace the batteries with new ones when the BATT lamp dims.



Notes

- After the batteries have been used for a while, the BATT lamp may flicker with the playback sound when you turn up the volume; however, this does not mean that you need to replace the batteries.
- The unit will play back normally for a while even after the BATT lamp dims. However, replace the batteries as soon as you can. If you do not, subsequent recording will not be done correctly.

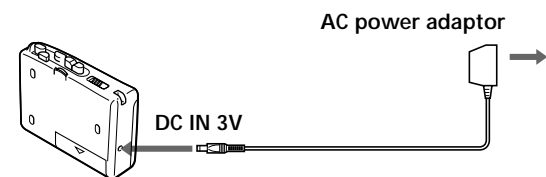
Battery life (Approximate hours)	(EIAJ*)	
	Playback	Recording
Sony alkaline LR6 (SG)	11	11
Sony R6P (SR)	3	3

* Measured value by the standard of EIAJ (Electronic Industries Association of Japan). (Using a Sony HF series cassette tape)

Note

The battery life may shorten depending on the operation of the unit.

House Current (TCM-333 only)



Connect the AC power adaptor to DC IN 3V and to the wall outlet. Use the AC-E30HG AC power adaptor (not supplied). Do not use any other AC power adaptor.



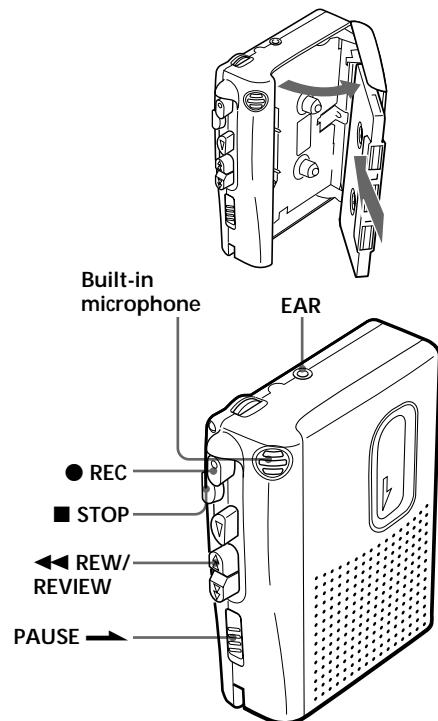
Note

Specifications for AC-E30HG varies for each area. Check your local voltage and the shape of plug before purchasing.

▶ Operating the Unit

Recording

You can record right away with the built-in microphone.



- 1 Insert a normal (TYPE I) tape with the side to start recording facing the cassette holder.
- 2 Press ● REC. Recording starts.

At the end of the tape, recording stops and the unit turns off automatically.

To	Press or slide
Stop recording	■ STOP
Pause recording	PAUSE → in the direction of the arrow. To release pause recording, release PAUSE →*.
Review the portion just recorded	Press and hold ◀◀ REW/REVIEW during recording. Release the button at the point to start playback.

*PAUSE → will be also automatically released when ■ STOP is pressed (stop-pause-release function).

To monitor the sound

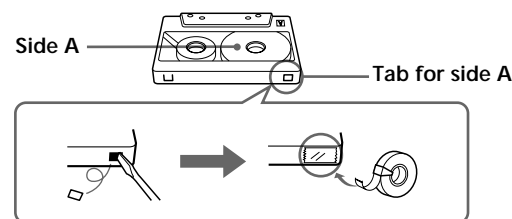
Connect an earphone (not supplied) firmly to the EAR jack.

Note

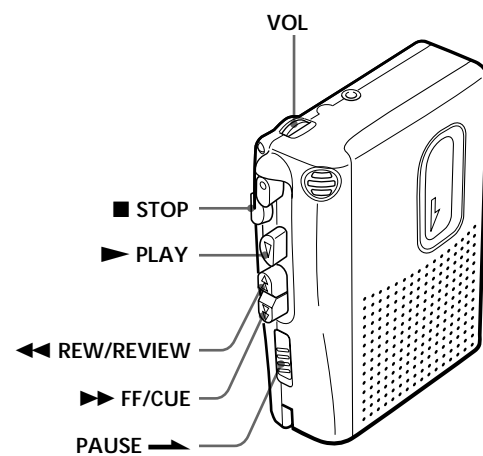
Do not use a CrO₂ (TYPE II) or metal (TYPE IV) tape, otherwise the sound may be distorted when you play back the tape, or the previous recording may not be erased completely.

To prevent a tape from being accidentally recorded over

Break out and remove the cassette tabs. To reuse the tape for recording, cover the tab hole with adhesive tape.



Playing a Tape



- 1 Insert a cassette with the side to start playing facing the cassette holder.
- 2 Press ► PLAY then adjust the volume. There is a raised dot to show the direction to turn down volume beside VOL.

At the end of the tape, playback stops and the unit turns off automatically.

If you plug in headphones (not supplied) to the EAR jack, you will get monaural output from both left and right channels.

To	Press or slide
Stop recording	■ STOP
Pause recording	PAUSE → in the direction of the arrow. To release pause recording, release PAUSE →*.
Review the portion just recorded	Press and hold ◀◀ REW/REVIEW during recording. Release the button at the point to start playback.

*PAUSE → will be also automatically released when ■ STOP is pressed (stop-pause-release function).

To monitor the sound

Connect an earphone (not supplied) firmly to the EAR jack.

Note

Do not use a CrO₂ (TYPE II) or metal (TYPE IV) tape, otherwise the sound may be distorted when you play back the tape, or the previous recording may not be erased completely.

To	Press or slide
Stop playback/stop fast forward or rewind	■ STOP
Pause playback	PAUSE → in the direction of the arrow. To release pause playback, release PAUSE →*.
Search forward during playback (CUE)	Press and hold ►► FF/CUE and release it at the point you want
Search backward during playback (REVIEW)	Press and hold ◀◀ REW/REVIEW and release it at the point you want
Fast forward**	►► FF/CUE during stop
Rewind**	◀◀ REW/REVIEW during stop
Start recording during playback	● REC

* PAUSE → will be also automatically released when ■ STOP is pressed (stop-pause-release function).

**If you leave the unit after the tape has been wound or rewound, the batteries will be consumed rapidly. Be sure to depress ■ STOP.

▶ Additional Information

Precautions

On power

- Operate the unit only on 3V DC. For AC operation, use the AC power adaptor recommended for the unit. Do not use any other type (TCM-333 only). For battery operation, use two size R6 (AA) batteries.

On the unit

- Do not leave the unit in a location near heat sources, or in a place subject to direct sunlight, excessive dust or mechanical shock.
- Should any solid object or liquid fall into the unit, remove the batteries or disconnect the AC power adaptor (TCM-333 only), and have the unit checked by qualified personnel before operating it any further.
- Keep personal credit cards using magnetic coding or spring-wound watches etc. away from the unit to prevent possible damage from the magnet used for the speaker.
- If the unit has not been used for a long time, set it in the playback mode and warm it up for a few minutes before inserting a tape.

On tapes longer than 90 minutes

We do not recommend the use of tapes longer than 90 minutes except for a long continuous recording or playback. They are very thin and tend to be stretched easily.

If you have any questions or problems concerning your unit, please consult your nearest Sony dealer.

Troubleshooting

Should any problem persist after you have made these checks, consult your nearest Sony dealer.

You cannot press ● REC.

- The tab on the tape has been removed.

You cannot press ► PLAY.

- The tape has reached the end. Rewind the tape.

The unit does not operate.

- The batteries have been inserted with incorrect polarity.
- The batteries are weak.
- PAUSE → is slid in the direction of the arrow.
- The AC power adaptor or car battery cord is not firmly connected (TCM-333 only).
- The batteries have been inserted, but simultaneously the AC power adaptor is connected and not to be done to the wall outlet (TCM-333 only).

No sound comes from the speaker.

- The earphone is plugged in.
- The volume is turned down completely.

The sound drops out or comes with excessive noise.

- The volume is turned down completely.
- The batteries are weak.
- The heads are contaminated. See "Maintenance."

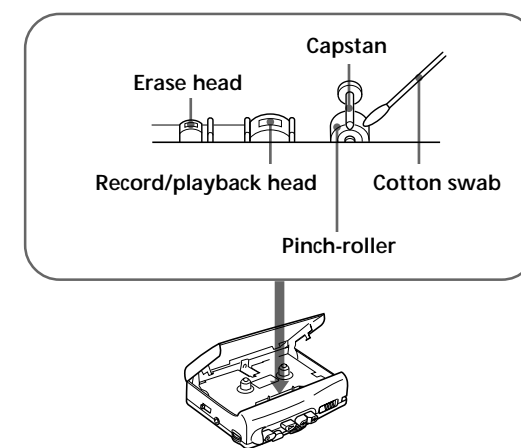
Recording cannot be made.

- Connection is made incorrectly.
- The batteries are weak.
- The record / playback head is contaminated.

Recording cannot be erased completely.

- The erase head is contaminated.
- Recording or erasing is being made using recorded CrO₂ (TYPE II) or metal (TYPE IV) tape.

Maintenance



To clean the tape heads and path

Wipe the heads, pinch rollers, and the capstans with a cotton swab moistened with alcohol every 10 hours of use.

To clean the exterior

Use a soft cloth slightly moistened in water. Do not use alcohol, benzine or thinner.

Specifications

Recording system

2-track 1 channel monaural

Frequency range

250 - 6,300 Hz

Speaker

Approx. 3.6 cm (1⁷/₁₆ in.) dia.

Power output

130 mW (at 10 % harmonic distortion)

Output

Earphone jack (minijack) for 8 - 300 ohms earphone

Power requirements

- Two size R6 (AA) batteries (not supplied): 3V DC
- DC IN 3 V jack (TCM-333 only) accepts:
 - AC-E30HG AC power adaptor (not supplied) suitable in the country where the unit is to be used.
 - Sony DCC-E230 car battery cord (not supplied) for use on 12 V car battery.

Dimensions (w/h/d) (incl. projecting parts and controls)

Approx. 112 × 91 × 36.5 mm (4¹/₂ × 3⁵/₈ × 1⁷/₁₆ in.)

Mass (not incl. batteries)

Approx. 170g (6.0 oz)

Design and specifications are subject to change without notice.