

FM/AM Clock Radio

Operating Instructions

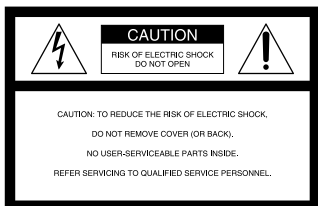
ICF-C160 DREAM MACHINE

Dream Machine is a trademark of Sony Corporation.

Sony Corporation © 1997 Printed in Malaysia

WARNING

To prevent fire or shock hazard, do not expose the unit to rain or moisture.



This symbol is intended to alert the user to the presence of uninsulated "dangerous voltage" within the product's enclosure that may be of sufficient magnitude to constitute a risk of electric shock to persons.



This symbol is intended to alert the user to the presence of important operating and maintenance (servicing) instructions in the literature accompanying the appliance.

* The graphical symbols are on the bottom enclosure.

You are cautioned that any changes or modifications not expressly approved in this manual could void your authority to operate this equipment.

Before You Begin

Thank you for choosing the Sony Dream Machine! The Dream Machine will give you many hours of reliable service and listening pleasure. Before operating the Dream Machine, please read these instructions thoroughly and retain them for future reference.

Features

- Dual alarm
- Date display
- Full power backup function to keep the clock, the alarm (radio and buzzer) and the radio operation during a power interruption with a 6F22 battery (not supplied) installed.

IMPORTANT SAFEGUARDS

For your protection, please read these safety instructions completely before operating the appliance, and keep this manual for future reference. Carefully observe all warnings, precautions and instructions on the appliance and described in the operating instructions supplied with the appliance by Sony.

INSTALLATION

Water and Moisture

Do not install the appliance near water: for example, near a bathtub, washbowl, kitchen sink, laundry tub, in a wet basement, or near a swimming pool.

Heat

Do not install the appliance near sources of heat such as radiators, heat registers, stoves, or other appliances that produce heat.

Ventilation

Slots and openings in the cabinet and in the back or bottom are provided for necessary ventilation. To ensure reliable and safe operation of the appliance, and to protect it from overheating, these slots and openings must never be blocked or covered.

Do not place the appliance on a bed, sofa, rug or other similar surface which may block the slots and openings.

Do not install the appliance in a confined space, such as a bookcase or built-in cabinet, unless proper ventilation is provided.

Carts and Stands

Do not install the appliance on an unstable table, shelf, cart or stand. Use only a cart or stand recommended by Sony.

An appliance and cart combination should be moved with care. Quick stops, excessive force, and uneven surfaces may cause the appliance and cart combination to overturn.

Wall or Ceiling Mounting

If your appliance can be mounted to a wall or ceiling, mount it only as recommended by Sony.

USE

Power Source

Connect the appliance to a power supply only of the type described in the operating instructions or as marked on the appliance.

Grounding or Polarization

Do not defeat the grounding or polarization feature of the AC power cord. If your AC receptacle will not accept the power cord plug, contact your electrician to install a proper AC receptacle.

AC Receptacle

Check to make sure that the AC receptacle holds the power cord plug firmly and securely. If the power cord plug is loose, contact your electrician to replace the defective and unsafe AC receptacle.

Power-Cord Protection

Route the power cord so that it is not likely to be walked on or pinched by having objects placed on it, paying particular attention to the plugs, receptacles, and the point where the cord exits from the appliance.

When not in use

Unplug the power cord of the appliance from the outlet when left unused for a long period of time.

To disconnect the cord, pull it out by grasping the plug. Never pull the plug out by the cord.

Foreign Objects

Be careful that foreign objects and liquids do not enter the enclosure through openings.

Cleaning

Clean the appliance only as recommended by Sony.

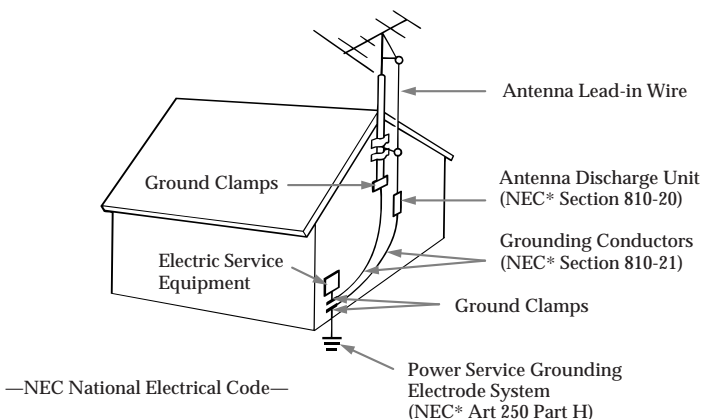
ANTENNAS

Outdoor Antenna Grounding

If an outdoor antenna or cable system is installed, follow the precautions below. An outdoor antenna system should not be located in the vicinity of overhead power lines or other electric light or power circuits, or where it can come in contact with such power lines or circuits. WHEN INSTALLING AN OUTDOOR ANTENNA SYSTEM, EXTREME CARE SHOULD BE TAKEN TO KEEP FROM CONTACTING SUCH POWER LINES OR CIRCUITS AS CONTACT WITH THEM IS ALMOST INVARIABLY FATAL.

Be sure the antenna system is grounded so as to provide some protection against voltage surges and built-up static charges. Section 810 of the National Electrical Code provides information with respect to proper grounding of the mast and supporting structure, grounding of the lead-in wire to an antenna discharge unit, size of grounding conductors, location of antenna-discharge unit, connection to grounding electrodes, and requirements for the grounding electrode.

Antenna Grounding According to the National Electrical Code



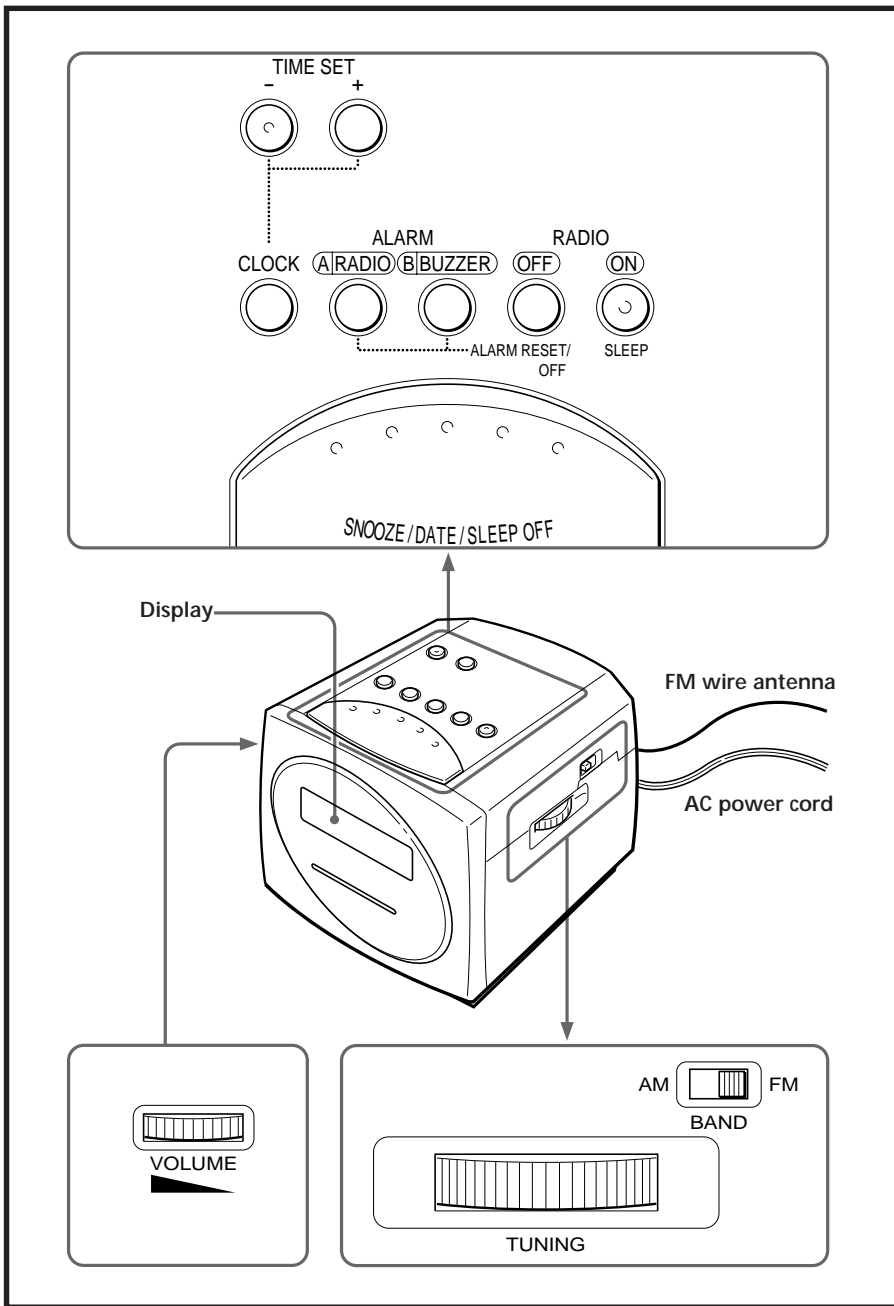
—NEC National Electrical Code—

SERVICE

Unplug the appliance from the wall outlet and consult qualified service personnel when:

- the power cord or the plug has been damaged.
- a solid object or liquid has fallen into the cabinet.
- the appliance has been exposed to rain or moisture.
- the appliance does not appear to operate normally or exhibits a marked change in performance.
- the appliance has been dropped, or the enclosure damaged.

Do not attempt to service the appliance beyond that described in the operating instructions. For all other servicing refer to qualified service personnel only.



Installing the Battery

To keep good time, your Dream Machine needs one 6F22 battery (not supplied), in addition to house current. The battery keeps the clock operating in the event of a power interruption. Before setting the time on your Dream Machine, open the lid at the bottom of the unit, install the battery with correct polarity and then close the lid.

- After a power interruption, the displayed time may not be always correct (It may gain or lose about 10 minutes per hour).

Knowing When To Replace the Battery

- To check battery power, unplug the power cord from the wall outlet and plug it in again after a few minutes. If the displayed time is incorrect, replace the battery with a new one.

Setting the Clock and the Date

Setting the Clock

- Plug in the unit. The display will flash "AM 12:00".
- While holding down **CLOCK**, press **TIME SET +** or **-** until the correct time appears in the display. When you release **CLOCK**, the clock begins to operate.

- To set the current time rapidly, keep pressing the **+** or **-** button while holding down **CLOCK**.

Setting the Date

- While holding down **SNOOZE/DATE/SLEEP OFF**, press **TIME SET +** or **-** until the correct date appears in the display. Then, release **SNOOZE/DATE/SLEEP OFF**.
- To display the date, press **SNOOZE/DATE/SLEEP OFF**. The display returns to the current time when you release **SNOOZE/DATE/SLEEP OFF**.

Playing the Radio

- Press **RADIO ON** to turn on the radio.
- Select **FM** or **AM** using **BAND**.
- Tune in a station using **TUNING**.
- Adjust **VOLUME** to adjust the volume.

- To turn off the radio, press **RADIO OFF**.
- To improve radio reception
 - FM:** Extend the FM wire antenna fully to improve reception.
 - AM:** Rotate the unit horizontally for optimum reception. A ferrite bar antenna is built into the unit.

Setting the Alarm

To set the radio alarm, first tune in a station and adjust the volume.

- While holding down **ALARM A RADIO** (for the radio) or **B BUZZER** (for the buzzer), press **TIME SET +** or **-** until the desired time appears in the display. When you release **ALARM A** or **B**, the **ALARM A** or **B** indicator stops flashing and lights up, and the current time appears in the display. The alarm will come on at the preset time and automatically turn itself off after 59 minutes.

- If you set **ALARM A** and **ALARM B** at the same desired time, only **ALARM A** will work.
- To shut off the alarm, press **RADIO OFF**•**ALARM RESET/OFF**. The alarm will come on at the preset time the next day.
- To cancel either alarm, while holding down the **ALARM A** or **ALARM B** button, press **RADIO OFF**•**ALARM RESET/OFF**.
- To check the preset time, press **ALARM A** or **B**.

To Doze a Few More Minutes

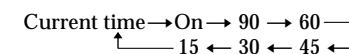
- Press **SNOOZE/DATE/SLEEP OFF**. The radio or buzzer will shut off but will automatically come on again after about 6 minutes. You can repeat this process as many times as you like.
- You can reset the alarm time while activating the snooze function.

Setting the Sleep Timer

Enjoy falling asleep to the radio using the built-in sleep timer that shuts off the radio automatically at a preset time.

1 Press RADIO ON/SLEEP.

The radio turns on. It will go off after the preset time has passed. You can set the sleep timer of 90, 60, 45, 30 or 15 minutes. Every push changes the display as follows.



The radio will play for the time you set, then shut off.

- To turn off the radio before the preset time, press **SNOOZE/DATE/SLEEP OFF**.

To Use Both Sleep Timer and Alarm Function

You can fall asleep to the radio sound and you will be awakened by the radio/buzzer alarm at the preset time.

- Set the alarm. (See "Setting the Alarm".)
- Set the sleep timer. (See "Setting the Sleep Timer".)

Precautions

- Operate the unit on the power sources specified in "Specifications".
- To disconnect the power cord, pull it out by the plug, not the cord.
- Do not place the unit on surfaces (rugs, blankets, etc.) or near materials (curtains, draperies) that block the ventilation holes.
- Should anything fall into the unit, unplug the unit and have it checked by qualified personnel before operating it further.
- To clean the casing, use a soft cloth dampened with a mild detergent solution.

Battery Warning

When the unit will be left unplugged for a long time, remove the battery to avoid undue battery discharge and damage to the unit from battery leakage.

If you have any questions or problems concerning your unit please consult your nearest Sony dealer.

Specifications

Frequency range	FM : 87.5 – 108 MHz AM: 530 – 1605 kHz
Speaker	Approx. 6.6 cm (2 5/8 inches) dia. 8 ohms
Power output	120 mW (at 10 % harmonic distortion)
Power requirements	120 V AC, 60 Hz For power backup: 9 V DC, one 6F22 battery
Battery life	Approx. 35 hours using the Sony S-006P (U) battery
Dimensions	Approx. 120 x 124 x 132 mm (w/h/d) (4 3/4 x 5 x 5 1/4 inches) incl. projecting parts and controls
Mass	Approx. 660 g (1 lb 7.2 oz) not incl. battery

Design and specifications are subject to change without notice.