

FM Stereo/AM Cassette Player Clock Radio

Operating Instructions

DREAM MACHINE

Dream Machine is a trademark of Sony Corporation.

ICF-CS660

Sony Corporation © 1996 Printed in Malaysia

Owner's Record

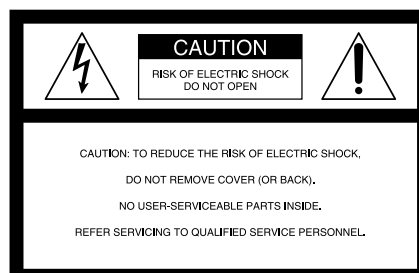
The model number and the serial number are located at the bottom.
Record the serial number in the space provided below. Refer to these numbers whenever you call upon your Sony dealer regarding this product.


Model No. ICF-CS660


Serial No. _____

WARNING

To prevent fire or shock hazard, do not expose the unit to rain or moisture.



 This symbol is intended to alert the user to the presence of uninsulated "dangerous voltage" within the product's enclosure that may be of sufficient magnitude to constitute a risk of electric shock to persons.

 This symbol is intended to alert the user to the presence of important operating and maintenance (servicing) instructions in the literature accompanying the appliance.

* The graphical symbols are on the bottom.

You are cautioned that any changes or modifications not expressly approved in this manual could void your authority to operate this equipment.

Before You Begin

Thank you for choosing the Sony Dream Machine! The Dream Machine will give you many hours of reliable service and listening pleasure. Before operating the Dream Machine, please read these instructions thoroughly and retain them for future reference.

Features

- Wake up to your favorite music tape
- Stereo speaker with the MEGA BASS sound system.
- Dual alarm
- Date display
- Forward/reverse time setting
- Power backup to keep the clock during a power interruption with a 6F22 battery (not supplied) installed.

Precautions

- Operate the unit on the power sources specified in "Specifications".
- To disconnect the power cord, pull it out by the plug, not the cord.
- Do not place the unit on surfaces (rugs, blankets, etc.) or near materials (curtains, draperies) that block the ventilation holes.
- Should anything fall into the unit, unplug the unit and have it checked by qualified personnel before operating it further.
- To clean the casing, use a soft cloth dampened with a mild detergent solution.

Battery Warning

When the unit will be left unplugged for a long time, remove the battery to avoid undue battery discharge and damage to the unit from battery leakage.

If you have any questions or problems concerning your unit, please consult your nearest Sony dealer.

IMPORTANT SAFEGUARDS

For your protection, please read these safety instructions completely before operating the appliance, and keep this manual for future reference. Carefully observe all warnings, precautions and instructions on the appliance and described in the operating instructions supplied with the appliance by Sony.

INSTALLATION

Water and Moisture

Do not install the appliance near water: for example, near a bathtub, washbowl, kitchen sink, laundry tub, in a wet basement, or near a swimming pool.

Heat

Do not install the appliance near sources of heat such as radiators, heat registers, stoves, or other appliances that produce heat.

Ventilation

Slots and openings in the cabinet and in the back or bottom are provided for necessary ventilation. To ensure reliable and safe operation of the appliance, and to protect it from overheating, these slots and openings must never be blocked or covered.

Do not place the appliance on a bed, sofa, rug or other similar surface which may block the slots and openings.

Do not install the appliance in a confined space, such as a bookcase or built-in cabinet, unless proper ventilation is provided.

Carts and Stands

Do not install the appliance on an unstable table, shelf, cart or stand. Use only a cart or stand recommended by Sony.

An appliance and cart combination should be moved with care. Quick stops, excessive force, and uneven surfaces may cause the appliance and cart combination to overturn.

Wall or Ceiling Mounting

If your appliance can be mounted to a wall or ceiling, mount it only as recommended by Sony.

USE

Power Source

Connect the appliance to a power supply only of the type described in the operating instructions or as marked on the appliance.

Grounding or Polarization

Do not defeat the grounding or polarization feature of the AC power cord. If your AC receptacle will not accept the power cord plug, contact your electrician to install a proper AC receptacle.

AC Receptacle

Check to make sure that the AC receptacle holds the power cord plug firmly and securely. If the power cord plug is loose, contact your electrician to replace the defective and unsafe AC receptacle.

Power-Cord Protection

Route the power cord so that it is not likely to be walked on or pinched by having objects placed on it, paying particular attention to the plugs, receptacles, and the point where the cord exits from the appliance.

When not in use

Unplug the power cord of the appliance from the outlet when left unused for a long period of time.

To disconnect the cord, pull it out by grasping the plug. Never pull the plug out by the cord.

Foreign Objects

Be careful that foreign objects and liquids do not enter the enclosure through openings.

Cleaning

Clean the appliance only as recommended by Sony.

ANTENNAS

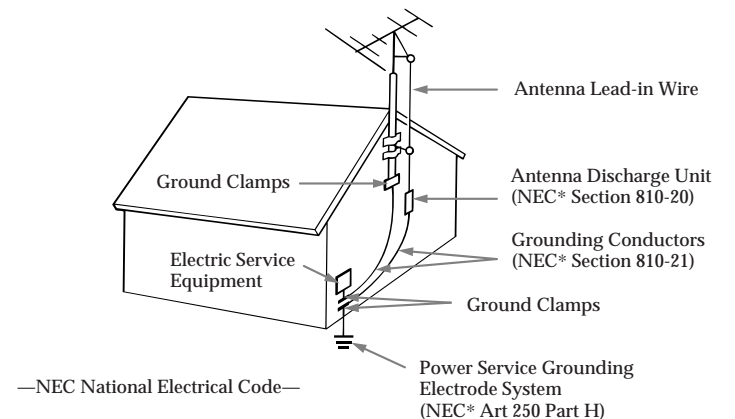
Outdoor Antenna Grounding

If an outdoor antenna or cable system is installed, follow the precautions below.

An outdoor antenna system should not be located in the vicinity of overhead power lines or other electric light or power circuits, or where it can come in contact with such power lines or circuits. WHEN INSTALLING AN OUTDOOR ANTENNA SYSTEM, EXTREME CARE SHOULD BE TAKEN TO KEEP FROM CONTACTING SUCH POWER LINES OR CIRCUITS AS CONTACT WITH THEM IS ALMOST INVARIABLY FATAL.

Be sure the antenna system is grounded so as to provide some protection against voltage surges and built-up static charges. Section 810 of the National Electrical Code provides information with respect to proper grounding of the mast and supporting structure, grounding of the lead-in wire to an antenna discharge unit, size of grounding conductors, location of antenna-discharge unit, connection to grounding electrodes, and requirements for the grounding electrode.

Antenna Grounding According to the National Electrical Code

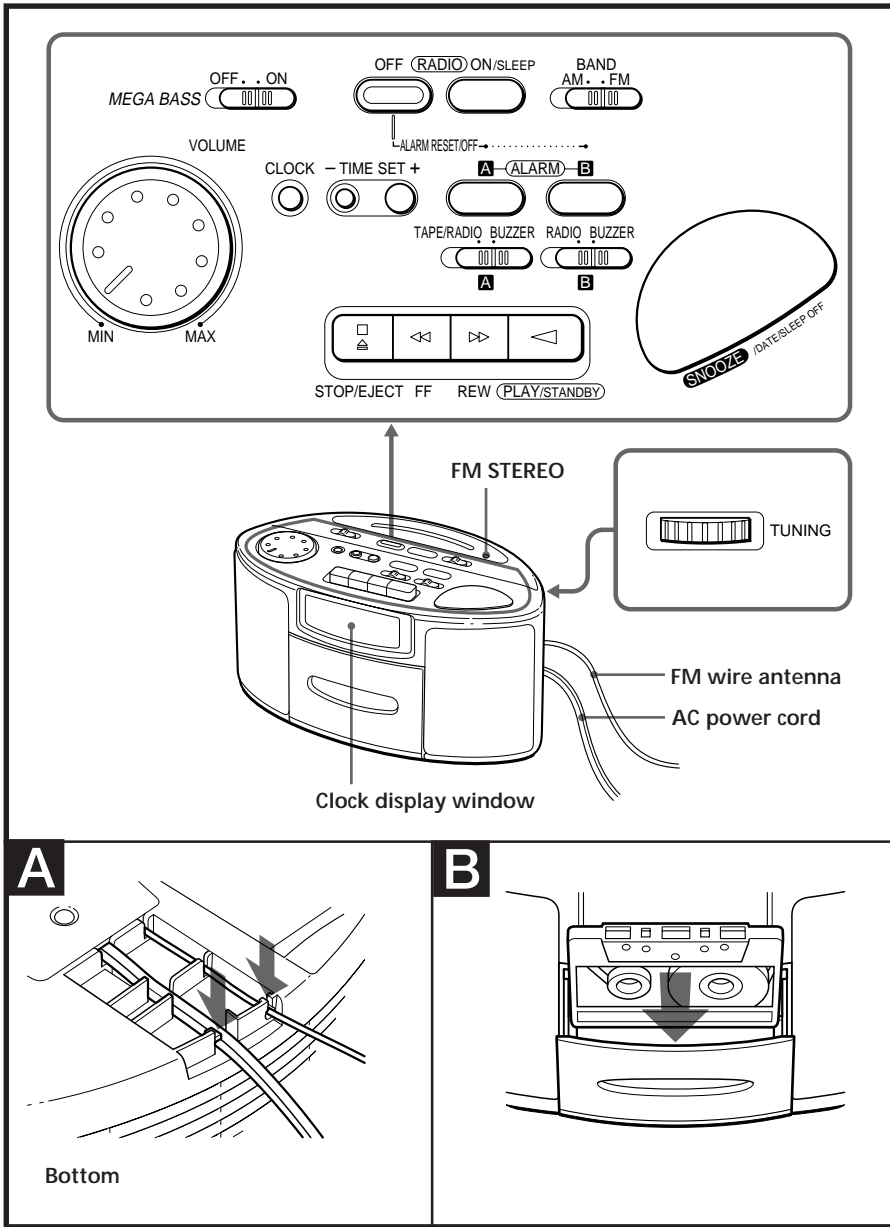


SERVICE

Unplug the appliance from the wall outlet and consult qualified service personnel when:

- the power cord or the plug has been damaged.
- a solid object or liquid has fallen into the cabinet.
- the appliance has been exposed to rain or moisture.
- the appliance does not appear to operate normally or exhibits a marked change in performance.
- the appliance has been dropped, or the enclosure damaged.

Do not attempt to service the appliance beyond that described in the operating instructions. For all other servicing refer to qualified service personnel only.



Getting Started

Setting up the cord

(See Fig. **A**)

Pull the AC power cord and FM wire antenna along the groove from the bottom of this unit.

Installing the Battery

To keep good time, your Dream Machine needs one 6F22 battery (not supplied), in addition to house current. The battery keeps the clock operating in the event of a power interruption. Before setting the time on your Dream Machine, open the lid at the bottom of the unit, install the battery with correct polarity and then close the lid.

- After a power interruption, the displayed time may not be always correct (it may gain or lose about 10 minutes per hour).

Knowing When to Replace the Battery

To check battery power, unplug the power cord from the wall outlet and plug it in again after a few minutes. If the displayed time is incorrect, replace the battery with a new one.

Setting the Clock and the Date

Setting the Clock

1. Plug in the unit. The display will flash "AM 12:00".
2. While holding down **CLOCK**, press either + or - under **TIME SET** till the correct time appears in the display. When you release **CLOCK**, the clock begins to operate.

- To set the current time rapidly, keep pressing the + or - button holding down **CLOCK**.

Setting the Date

1. While holding down **SNOOZE/DATE/SLEEP OFF**, press either + or - under **TIME SET** till the correct date appears in the display. Then release **SNOOZE/DATE/SLEEP OFF**.

- To display the date, press **SNOOZE/DATE/SLEEP OFF**. The display returns to the current time when you release **SNOOZE/DATE/SLEEP OFF**.

Playing the Radio

1. Press **RADIO ON/SLEEP** to turn on the radio and adjust volume by turning **VOLUME**.
2. Select **FM** or **AM**, and tune in to a station using **TUNING**.

- To turn off the radio, press **RADIO OFF/ALARM RESET/OFF**.
- When an FM stereo program of sufficient signal strength is received, the **FM STEREO** indicator lights up.

To Improve Radio Reception

FM: Extend the FM wire antenna to improve FM reception.

AM: Rotate the unit horizontally for optimum reception. A ferrite bar antenna is built into the unit.

Playing Back a Tape

1. Press **RADIO OFF/ALARM RESET/OFF** to turn off the radio.
2. Press **STOP/EJECT** (⏏) to open the cassette holder and insert a cassette tape (See Fig. **B**).
3. Depress **PLAY/STANDBY** (▶).
4. Adjust **VOLUME**.

- To stop playback, press **STOP/EJECT** (⏏).
- To rewind the tape, press **REW** (◀).
- To advance the tape rapidly, press **FF** (◀◀).

Notes

- In fast-forward or rewind mode, the motor stops at the tape end. The locked button will automatically release.
- While playing back a tape, do not set the tape alarm. If you set the tape alarm during playback, the tape being played back enters the pause mode.

To Obtain Powerful Bass

Switch **MEGA BASS** to **ON**. The "MEGA BASS" system produces a powerful bass with the use of a bass reflex system added to a normal speaker system.

Setting the Alarm

You can set the tape, radio or buzzer alarm to **ALARM A**, and radio or buzzer to **ALARM B**.

- To set the tape alarm, first play back the desired tape as described in "Playing Back a Tape", adjust the volume and rewind the tape.
- To set the radio alarm, first tune in a station as described in "Playing the Radio" and adjust the volume.

1. Set the alarm time for tape, radio or buzzer. While holding down **ALARM A** or **B** press either + or - under **TIME SET** till the desired time appears in the display. When you release **ALARM A** or **B**, the **ALARM A** or **B** indicator stops flashing and lights up, and the current time appears in the display.
2. Set the appropriate **ALARM** selector to the desired alarm position. For tape alarm, leave **PLAY/STANDBY** (▶) pressed. The tape, radio or buzzer will automatically sound at the preset time, and automatically turn itself off after 59 minutes, unless it is turned off manually.

- To turn off the alarm manually, press **RADIO OFF/ALARM RESET/OFF**. The alarm will come on at the preset time on the next day.
- To stop the tape, press **STOP/EJECT** (⏏).
- To cancel the alarm before the alarm time, while holding down **ALARM A** or **B**, press **RADIO OFF/ALARM RESET/OFF**.
- To check the preset time, press **ALARM A** or **B**.

Notes

- The buzzer sound level is fixed, and independent of the **VOLUME** control.
- You can set **ALARM A** and **ALARM B** at the same time. At the present time, either the tape radio or buzzer will sound depending on the set function to **ALARM A**, and either the radio or buzzer will sound depending on the set function to **ALARM B**.
- If you set **ALARM A** and **ALARM B** to the same desired time, only **ALARM A** will work.
- Even if you are listening to the radio, you can set the tape, radio or buzzer alarm.
- While you are listening to the tape, you can set only the buzzer alarm.

To Doze a Few More Minutes

1. Press **SNOOZE/DATE/SLEEP OFF**.

The radio, tape or buzzer will shut off but will automatically come on again after about 6 minutes. You can repeat this process as many times as you like.

- You can reset the alarm time while activating the snooze function.

To Use Both Sleep Timer and Alarm Function

You can fall asleep to the radio sound and you will be awakened by the tape/radio/buzzer alarm at the preset time.

1. Set the alarm. (See "Setting the Alarm".)
2. Set the sleep timer. (See "Setting the Sleep Timer".)

Setting the Sleep Timer

Enjoy falling asleep to the radio using the built-in sleep timer that shuts off the radio automatically at a preset time.

1. Press **RADIO ON/SLEEP**

The radio turns on. It will go off after the preset time has passed. You can set the sleep timer of 90, 60, 45, 30 or 15 minutes. Every push changes the display as follows.

Current time → On → 90 → 60
 ↑ 15 ← 30 ← 45 ←

The radio will play for the time you set, then shut off.

- To turn off the radio before the preset time, press **SNOOZE/DATE/SLEEP OFF**.
- To fall asleep to the tape sound, turn the radio off and play back a recorded tape. When it reaches its end, **PLAY/STANDBY** will release automatically. The tape playback time depends on the length of the tape.

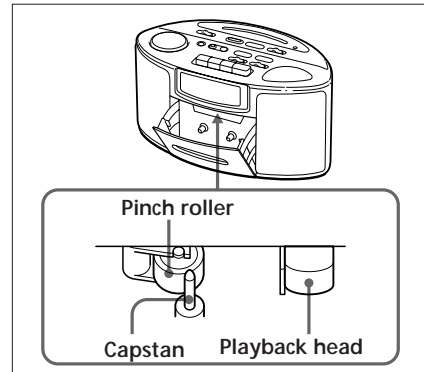
Maintenance

Cleaning the Playback Head and the Tape Path

We recommend the cleaning after every 10 hours of operation.

Wipe the head, pinch roller and capstan with a cleaning tip slightly moistened with cleaning fluid or alcohol.

After cleaning the head, pinch roller and tape path, insert a cassette when the areas cleaned are completely dry.



Cleaning the Cabinet

Clean the cabinet, panel and controls with a soft cloth slightly moistened with a mild detergent solution. Do not use any type of abrasive pad, scouring powder or solvent such as alcohol or benzene.

Specifications

Radio section

Frequency range:

FM: 87.5-108.0 MHz

AM: 530-1605 kHz

Tape player section and general

Track system: 4 track, 2 channel, stereo

Frequency response: 125 - 10,000 Hz with normal (TYPE I) tapes

Speaker: Approx. 7.7 cm (3 inches) dia. 4 ohms.

Power outputs:

1W +1W (at 10% harmonic distortion)

Power requirements: 120 V AC, 60 Hz

For the power backup function: 9 V DC, one 6F22 battery

Battery life: Approx. 32 hours, using Sony battery S-006P (U)

Dimensions: Approx. 258 × 141.5 × 146 mm (w × h × d) (10 1/4 × 5 5/8 × 5 3/4 inches) incl.

projecting parts and controls

Mass: Approx. 1.4 kg (3 lb 1.4 oz) not incl. battery

Optional accessory

Cleaning Kit KK-WM1

Your dealer may not handle some of the above listed optional accessories. Please ask your dealer for detailed information on the optional accessories available in your country.

Design and specifications subject to change without notice.

Troubleshooting

Should any problem occur with the unit, make the following simple checks to determine whether or not servicing is required.

If the problem persists, consult the nearest Sony dealer.

The clock does not show the correct time. There has been an electrical power interruption.

The tape, radio or buzzer alarm sound does not come on at the preset time.

Check the followings:

- Is the current time correctly set? Check the **AM/PM** indication.
- Is the alarm time correctly set? Check the **AM/PM** indication.
- Is the **ALARM A** or **B** selector set correctly? For tape alarm: set the **ALARM A** selector to **TAPE/RADIO**. For radio alarm: set the **ALARM A** or **B** selector to **RADIO**. For buzzer alarm: set the **ALARM A** or **B** selector to **BUZZER**.
- For radio alarm, is the desired station tuned in?
- For tape alarm, is a recorded tape inserted? Isn't the tape at its end?
- Is the **VOLUME** dial adjusted correctly? If it is turned down completely, the alarm sound will not be heard. Be sure to turn up the volume.

- The inserted cassette tape cannot be played back. Is the alarm set to **ALARM A**? The tape cannot be played back when the tape alarm is set.