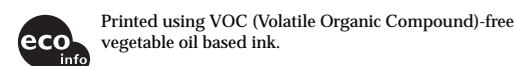


Radio Cassette Player

Operating Instructions



©2003 Sony Corporation Printed in Malaysia



http://www.sony.net/

*WALKMAN is a registered trademark of Sony Corporation to represent Headphone Stereo products.

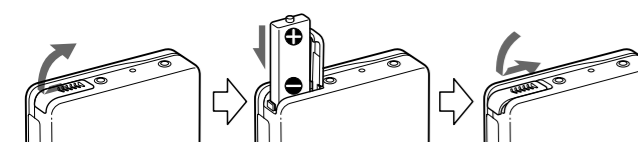
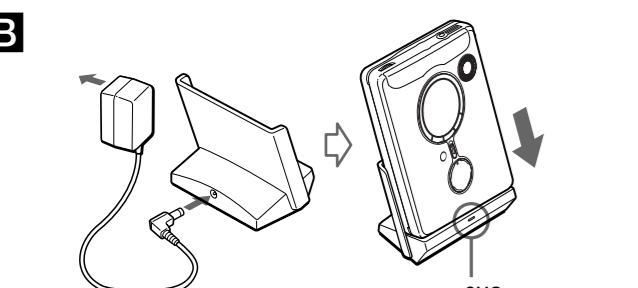
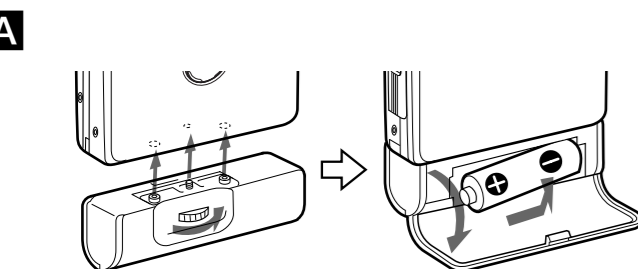
WALKMAN is a trademark of Sony Corporation.

The validity of the CE marking is restricted to only those countries where it is legally enforced, mainly in the countries EEA (European Economic Area).

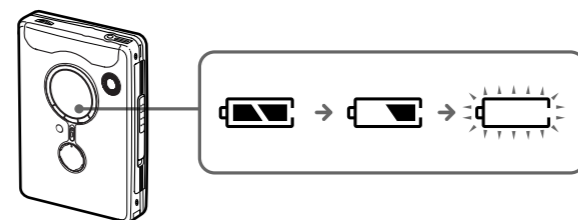
WARNING

To prevent fire or shock hazard, do not expose the unit to rain or moisture.

Do not install the appliance in a confined space, such as a bookcase or built-in cabinet.

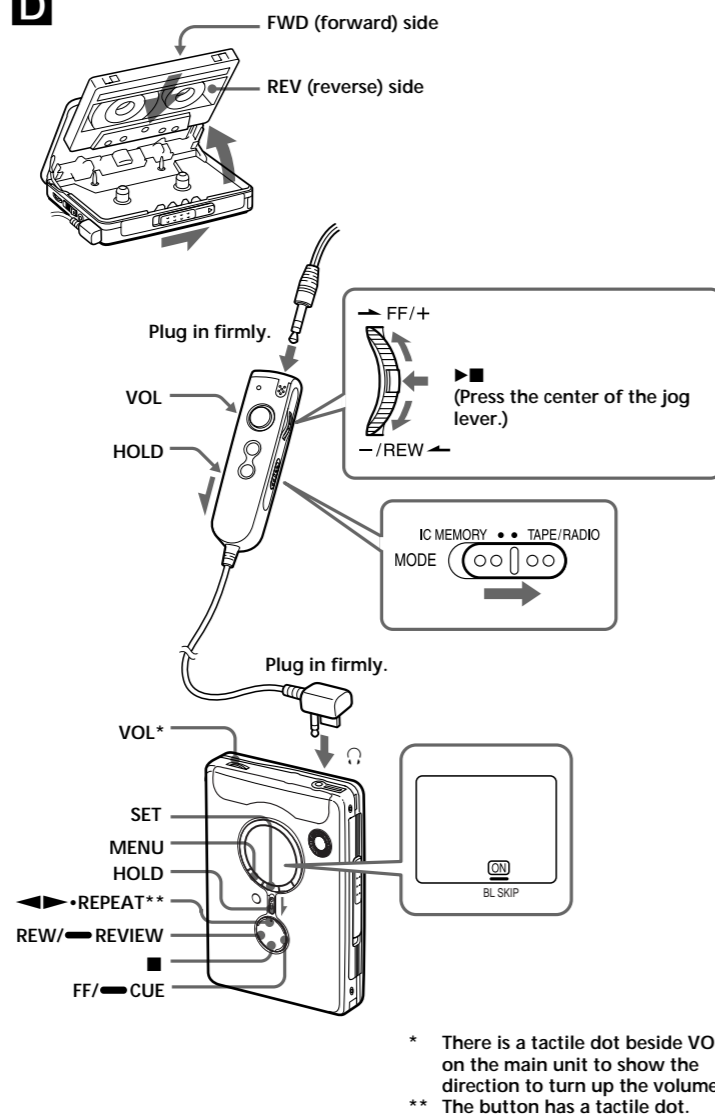


C

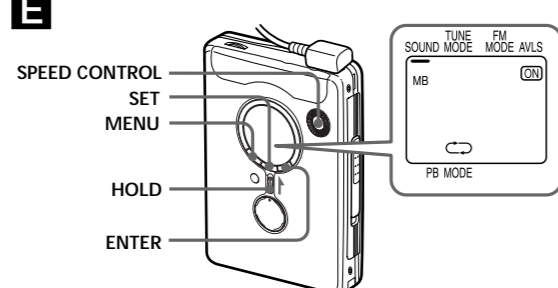


- To prevent fire, do not cover the ventilation of the apparatus with newspapers, table-cloths, curtains, etc. And don't place lighted candles on the apparatus.
- To prevent fire or shock hazard, do not place objects filled with liquids, such as vases, on the apparatus.
- Certain countries may regulate disposal of the battery used to power this product. Please consult with your local authority.

D



E



- Do not use the unit while it is charging. Remove the unit from the charging stand when using it.
- If you operate the unit while it is charging, the battery will not be charged.
- If you operate the unit while it is charging, this may cause a malfunction.
- Do not place the unit on the charging stand without the rechargeable battery. Otherwise, this may cause a malfunction.

This radio cassette player is supplied with a special IC memory function remote control. When playing a tape or listening to the radio, make sure that the MODE switch is set to TAPE/RADIO.

Playing a Tape

D

- Insert a cassette and if the HOLD function is on, slide the HOLD switch in the opposite direction of the arrow to unlock the controls.
- Press ◀▶•REPEAT on the main unit and adjust the volume with VOL. (On the remote control, press ▶ (play) ■ (stop).)

When adjusting the volume on the remote control
Set the VOL control on the main unit to around 6.

When adjusting the volume on the main unit
Set the VOL control on the remote control at maximum.

Operation on the remote control

To	Jog lever
Switch playback to the other side	Press ▶■ for 2 seconds or more during playback
Stop playback	Press ▶■ once during playback
Repeat the current track (Repeat Single Track function)	Press ▶■ twice during playback <i>To stop a single repeat, press ▶■ once.</i>
Fast forward*	Move toward FF/+ during stop
Rewind*	Move toward -/REW during stop
Search forward during playback (CUE)	Move and hold toward FF/+ and release it at the point you want
Search backward during playback (REVIEW)	Move and hold toward -/REW and release it at the point you want
Play the next track/succeeding 9 tracks from the beginning (AMS**)	Move toward FF/+ once or repeatedly during playback
Play the current track/previous 8 tracks from the beginning (AMS**)	Move toward -/REW once or repeatedly during playback
Play the other side from the beginning (Skip Reverse function)	Move and hold toward FF/+ for 2 seconds or more during stop
Play the same side from the beginning (Rewind Auto Play function)	Move and hold toward -/REW for 2 seconds or more during stop
Play the next track/succeeding 9 tracks from the beginning (AMS**)	Move toward FF/+ once or repeatedly during playback
Play the current track/previous 8 tracks from the beginning (AMS**)	Move toward -/REW once or repeatedly during playback

Play the other side from the beginning (Skip Reverse function)

Play the same side from the beginning (Rewind Auto Play function)

Move and hold toward FF/+ for 2 seconds or more during stop

Move and hold toward -/REW for 2 seconds or more during stop

Operation on the main unit

To	Press
Switch playback to the other side	◀▶•REPEAT during playback
Stop playback	■ (stop)
Repeat the current track (Repeat Single Track function)	◀▶•REPEAT for 2 seconds or more during playback <i>To stop a single repeat, press ▶ (play) ■ (stop).</i>
Fast forward*	FF/CUE during stop
Rewind*	REW/REVIEW during stop
Search forward during playback (CUE)	Press and hold FF/CUE and release it at the point you want
Search backward during playback (REVIEW)	Press and hold REW/REVIEW and release it at the point you want
Play the next track/succeeding 9 tracks from the beginning (AMS**)	FF/CUE once or repeatedly during playback
Play the current track/previous 8 tracks from the beginning (AMS**)	REW/REVIEW once or repeatedly during playback
Play the other side from the beginning (Skip Reverse function)	FF/CUE for 2 seconds or more during stop
Play the same side from the beginning (Rewind Auto Play function)	REW/REVIEW for 2 seconds or more during stop

* Press ◀▶•REPEAT (on the remote control, press the jog lever) during fast forward or rewind to start playback.

**Automatic Music Sensor.

To skip a long blank space (BL SKIP* function)

- Press MENU repeatedly to set " " (the cursor) in the display to BL SKIP.
- Press SET to show "Ⓞ".

* When the BL SKIP function is on, the tape is fast-forwarded to the next track if there is a blank space longer than 12 seconds.

Preparations

Prepare a dry battery (not supplied) or the rechargeable battery (supplied).

Dry Battery A

Attach the supplied battery case, and then insert one R6 (size AA) battery with correct polarity.

Note

For maximum performance we recommend that you use a Sony alkaline battery.

Rechargeable Battery B

Charge the rechargeable battery before using it for the first time.

- Insert the supplied rechargeable battery NH-14WM(A) into the rechargeable battery compartment with correct polarity.
- Connect the supplied AC power adaptor to the charging stand, plug in the AC power adaptor to the house current (mains).
- Place the main unit on the charging stand. The CHG lamp will light up during charging. Full charging takes about 6 hours regardless of the battery power remaining. The CHG lamp will go off when the battery is fully charged.

Notes

- This charging stand charges the rechargeable battery based on a timer. If you remove the unit from the charging stand while it is charging, the timer will be reset and full charging will take about 6 hours when you place the unit on the charging stand again.
- You can use the unit before the CHG lamp goes off, but in that case, battery life will be shorter depending on the charging time.

When to replace/charge the battery C

Replace or charge the battery when " " flashes in the display.

Battery life* (Approx. hours)

Tape playback	Radio reception
50	56

Rechargeable battery NH-14WM (A)

Tape playback	30
Radio reception	34

Sony alkaline LR6 (SG)** and Rechargeable NH-14WM (A)

Tape playback	80
Radio reception	90

* Measured value by the standard of JEITA (Japan Electronics and Information Technology Industries Association). (Using a Sony HF series cassette tape)

** When using a Sony LR6(SG) alkaline dry battery (produced in Japan).

Notes

- The battery life may be shorter depending on the operating condition, the surrounding temperature and battery type.
- The AVLS setting (see "Using the Menu") will be cancelled when you replace the battery.

Using the Menu

E

Adjusting the Playback Modes

Press MENU repeatedly to set the cursor in the display to PB MODE. Then press SET to select the desired mode.

To play	Select
both sides repeatedly	↔
both sides once from the FWD side	↶

Emphasizing Sound

- Press MENU repeatedly to set the cursor in the display to SOUND.
- Press SET repeatedly to select the sound emphasis of your choice.

The indications change as follows:

- RV : Sound Revitalizer
Emphasizes treble sound.
- MB : Mega Bass
Emphasizes bass sound (moderate effect).
- GRV : Groove
Emphasizes bass sound (strong effect).
- no message : normal (no effect)

Note

If the sound is distorted with the mode "GRV", turn down the volume of the main unit or select other modes.

Protecting Your Hearing — AVLS (Automatic Volume Limiter System)

The maximum volume is kept down to protect your ears. Press MENU repeatedly in the playback, stop or radio mode to set the cursor in the display to AVLS. Then press SET to show "Ⓞ".

To cancel the AVLS function

Press SET so that "Ⓞ" disappears from the display.

Using Other Functions E

Adjusting the Tape Playback Speed

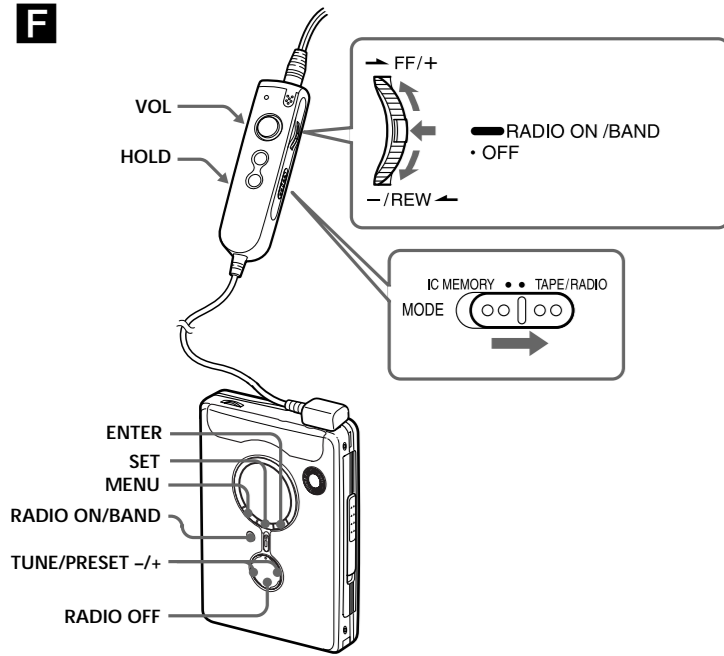
You can adjust the playback speed using SPEED CONTROL. Turn SPEED CONTROL to: - (slow) to play back at a slower speed. Center position to play back at normal speed. + (fast) to play back at a faster speed.

Locking the Controls — HOLD Function

Slide the HOLD switch in the direction of the arrow to lock the controls of the main unit (except SPEED CONTROL) or the remote control.

(turn over)

F



Listening to the Radio F

- Press RADIO ON/BAND to turn on the radio.
- Press RADIO ON/BAND repeatedly to select AM or FM.
- Press MENU on the main unit repeatedly and set the cursor in the display to TUNE MODE.
- For manual tuning
 - Press SET to choose MANUAL.
 - Press TUNE/PRESET + or - repeatedly to tune in to the desired station. Hold down TUNE/PRESET + or - for a few seconds to scan for stations.

For preset tuning

- Press SET to choose PRESET.
- Press TUNE/PRESET + or - repeatedly to recall the desired preset station. To use preset tuning, preset stations first (see "Presetting Radio Stations").

To turn off the radio

Press RADIO OFF.

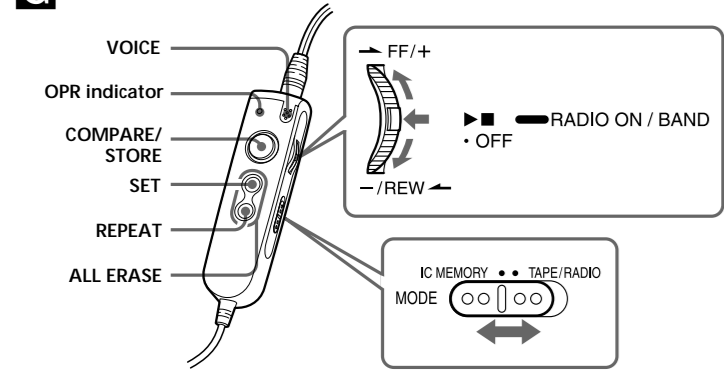
To improve the broadcast reception

- For AM:** Reorient the unit itself. When listening to an AM station, keep the remote control away from the main unit, otherwise, noise may be heard.
- For FM:** Extend the remote control cord (antenna). If the reception is still not good, press MENU repeatedly to set the cursor in the display to FM MODE. Then press SET to choose from "MONO" (monaural), "LOCAL" or none (stereo) for best reception.

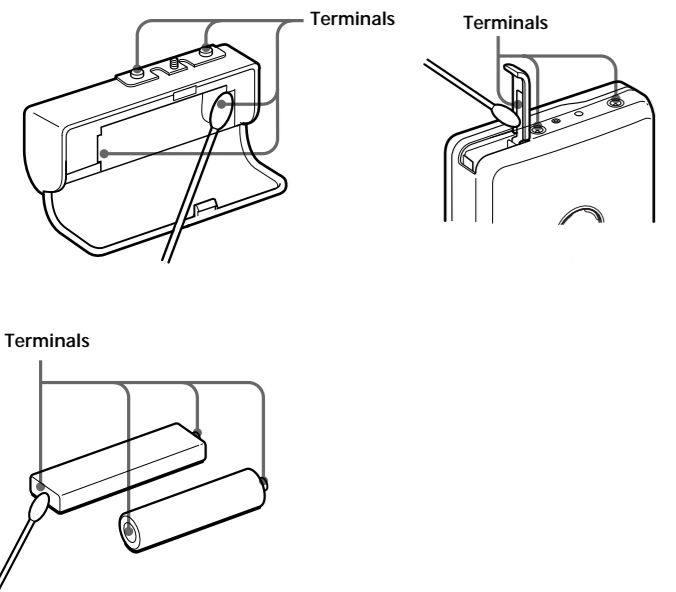
To operate from the remote control

To turn on the radio, press RADIO ON/BAND • OFF (the center of the jog lever) for more than 1 second (while the tape is in stop mode only). To select the band, press RADIO ON/BAND • OFF for more than 1 second while the radio is on. To tune in or recall a preset station, move toward FF/+ or -/REW. To turn off the radio, press RADIO ON/BAND • OFF.

G



H



Presetting Radio Stations F

You can preset up to 30 stations—20 for FM and 10 for AM (for the JFn area*, up to 16 stations—8 for FM and 8 for AM).

* Only if available. See "Receiving Stations Outside Your Country/Region".

Presetting Automatically Scanned Stations

- Press RADIO ON/BAND to turn on the radio.
- Press RADIO ON/BAND repeatedly to select AM or FM.
- Press and hold ENTER for more than 3 seconds. Preset number 1 will flash in the display and the main unit starts scanning the stations from the lower frequencies and stops for about 5 seconds when a station is received.
- If you wish to preset the currently received station, press ENTER while the preset number is flashing. The received station is preset on preset number 1 and the unit starts scanning for the next receivable station.
- Repeat step 4 until all receivable stations are preset.

To stop scanning

Press RADIO OFF. The radio is turned off at the same time.

Notes

- If stations are already stored, the newly preset stations replace the old ones when the above procedure is completed.
- If stations cannot be preset automatically, preset them manually.

Presetting Stations Manually

- Press RADIO ON/BAND to turn on the radio.
- Press RADIO ON/BAND repeatedly to select AM or FM.
- Press ENTER. The frequency digits will flash in the display.
- While the frequency digits are flashing, tune in to a station you wish to store using TUNE/PRESET + or - and press ENTER. The preset number will flash in the display.

- While the preset number is flashing, select the preset number you want using TUNE/PRESET + or - and press ENTER.

Notes

- If you cannot complete step 4 or 5 while the indicators are flashing, repeat from step 3.
- If a station is already stored, the new station replaces the old one.

Playing the Preset Radio Stations

- Press RADIO ON/BAND to turn on the radio.
- Press RADIO ON/BAND repeatedly to select AM or FM.
- Press MENU repeatedly to set the cursor in the display to TUNE MODE. Then press SET to display "PRESET".
- Press TUNE/PRESET + or -.

To cancel a stored station

- Follow the procedure above and in step 4, select the preset number you want to cancel and then press ENTER. The frequency digits will flash in the display.
- Press and hold TUNE/PRESET + or -. The frequency digit starts running up or down. Keep holding down the button until "..." is displayed.
- Press ENTER while "..." is flashing. A preset number will flash in the display.
- Press ENTER to cancel the stored station.

Scanning the Preset Radio Stations — DAPS (Digital Auto Preset Scanning)

- Press RADIO ON/BAND to turn on the radio.
- Press RADIO ON/BAND repeatedly to select AM or FM.
- Press and hold RADIO ON/BAND for 2 seconds or more. The preset stations of the selected band will be played for about 5 seconds each. (During DAPS the indicators in the display flash.)
- Press RADIO ON/BAND again to select the station while the desired preset station is being played.

Notes

- If there are no stations stored, the DAPS function does not work.
- Until a station is selected in step 4, the DAPS function turned on in step 3 will continue.

Receiving Stations Outside Your Country/Region (Excluding European, Saudi Arabian, and Chinese models)

- Press RADIO ON/BAND to turn on the radio.
- Press ENTER. The frequency digits will flash in the display.
- Press and hold RADIO ON/BAND until "Eur", "USA" or "JFn" flashes.
- Press RADIO ON/BAND repeatedly to select "Eur", "USA" or "JFn" and press ENTER.
- Tune in to and store stations as necessary following the procedure of "Listening to the Radio" and "Presetting Radio Stations".

Area indication and frequency range

Area*	Frequency range	
	FM (MHz)	AM (kHz)
Eur	87.5 - 108	531 - 1 602
USA	87.5 - 108	530 - 1 710
JFn	76.0 - 90.0	531 - 1 710

* Eur :European and other countries/regions
USA :USA, Canada, and Central and South America
JFn: Japan

Using the IC memory on the Remote Control G

The supplied language learning remote control has an IC memory function. Its maximum memory capacity is 480 seconds (8 minutes): 6 minutes for recording in IC memory from tape or radio, 1 minute for phrase repeat from tape, and 1 minute for voice recording.

Note

When using the IC memory function on the remote control, slide the HOLD switch of the main unit in the direction of the arrow to lock the controls. This is to prevent accidentally pressing the button on the main unit and activating other functions.

Recording in IC Memory from Tape or Radio

You can record the sound from tape or radio in the IC memory. The recorded sound is stored in a file that is created on the IC memory for each recording. You can record up to 6 minutes (or up to 30 files).

- Start playback from a tape or the radio.
- Set the VOL control on the main unit to around 6.
- Press COMPARE/STORE to start recording. The OPR indicator shows the remaining IC memory space as follows:
 - Lights in red: more than 1 minute
 - Flashes every second: 1 minute or less
 - Flashes every 0.5 seconds: 30 seconds or less
 - Flashes 4 times every 0.2 seconds, and a beep sound is heard: full
- Press the jog lever to stop recording. One file is created in the IC memory and the sound is stored in the file. If the memory becomes full during recording, the recording stops automatically.

Note

The recording function records in IC memory regardless of the main unit functions if you accidentally press COMPARE/STORE.

Playing Files Recorded in IC Memory

- Slide the MODE switch to IC MEMORY.
- Press the jog lever. The last file recorded or the file you stopped last time will be played back. The OPR indicator lights in green during playback. Playback will automatically stop after the last file recorded was played back.

To stop the playback before the last file

Press the jog lever again. When you press the jog lever next time, the playback will start from the beginning of the file you stopped.

Other operations

To	Move the jog lever
Skip to the beginning of the current/previous files	Toward FF/+ once or repeatedly
Succeeding files	If you move the jog lever toward FF/+ at the last file, 2 beeps are heard and playback starts from the beginning of the oldest file.

To	Move the jog lever
Go back to the beginning of the current/previous files	Toward -/REW once (to the beginning of the current file) or repeatedly (to the beginning of the the previous file)
CUE	Move and hold toward FF/+ during playback
REVIEW	Move and hold toward -/REW during playback

To	Move the jog lever
Go back to the beginning of the current/previous files	Toward -/REW once (to the beginning of the current file) or repeatedly (to the beginning of the the previous file)
CUE	Move and hold toward FF/+ during playback
REVIEW	Move and hold toward -/REW during playback

Erasing All Files from IC Memory

Press SET and REPEAT at the same time (ALL ERASE) and hold both buttons for 5 seconds. All IC memory files will be erased and a beep sound is heard.

Note

You cannot erase only 1 file.

Using the Language Learning Repeat Function G

Note

When using the language learning repeat function, slide the HOLD switch of the main unit in the direction of the arrow to lock the controls. This is to prevent accidentally pressing the button on the main unit and activating other functions.

Listening to a Desired Portion Repeatedly (Phrase Repeat)

When you want to listen repeatedly to a particular phrase on the tape or among files recorded in IC memory, set the starting point (A) and the ending point (B) of the phrase.

To set a desired portion on IC memory (phrase repeat setting)

- Slide the MODE switch to TAPE/RADIO or IC MEMORY.
- Play back a recorded tape sound or a file recorded in IC memory.

- During playback, press SET to tag the starting point (A). The OPR indicator flashes in orange. The OPR indicator shows the remaining time as follows:
 - Lights in orange: more than 10 seconds
 - Flashes every second: 10 seconds or less
 - Flashes every 0.5 seconds: 5 seconds or less
- During playback, press REPEAT to tag the ending point (B). The desired portion (point A-B) is set and the phrase between A and B will be played back repeatedly. The OPR indicator flashes in green. During playback, the tape is in the pause mode.

Note

For phrase repeat setting from a tape: if you do not set point B, the ending point is automatically set to the end of 1 minute. For phrase repeat setting from files recorded in IC memory: if you do not set point B, the ending point is automatically set to the end of the last recorded file.

To reset the point

During playback, press SET at the point you want to reset point A, press REPEAT at the point you want to reset point B. The OPR indicator flashes in green.

To stop phrase repetition

Press the jog lever. The settings you made (points A and B) are erased, and the tape or IC memory playback starts from the point you stopped (resume function).

Comparing Your Recorded Voice with Particular Phrase (Repeat & Compare Function)

You can listen to a particular phrase and then your recorded voice, one after the other repeatedly.

- Set the desired phrase (see "Listening to a desired portion repeatedly"). The phrase plays repeatedly.
- Press COMPARE/STORE and start voice recording using VOICE (the built-in microphone). The OPR indicator lights in orange during recording. Your voice is recorded. The maximum recording time is 1 minute.

The OPR indicator shows the remaining time as follows:

- Lights in orange: more than 10 seconds.
- Flashes every second: 10 seconds or less
- Flashes every 0.5 seconds: 5 seconds or less

When you want to improve the recorded result, repeat step 2 after step 3.

Press REPEAT.

Your recorded voice and the preset phrase play repeatedly in turn. The OPR indicator flashes in green during playback. During playback, the tape is in the pause mode.

To stop Repeat & Compare function

Press the jog lever. The preset phrase and your recorded voice will be erased, and the tape or IC memory playback starts from the point you stopped (resume function).

Precautions

On charging

- The supplied charging stand can be used only with this unit. No other model can be charged using this stand.
- Remove the AC power adaptor from the wall outlet as soon as possible after the rechargeable battery has been charged. Overcharging may damage the rechargeable battery.
- The charging stand and the rechargeable battery may become warm during charging, but this is not a problem.
- Do not tear off the film on the rechargeable battery.
- Use only the supplied charging stand to charge the supplied rechargeable battery.
- Be sure not to short-circuit the battery. When you carry it with you, use the supplied carrying case. If you are not using the case, do not carry the battery with other metallic objects such as keys, rings in your pocket.
- If the rechargeable battery is new or has not been used for a long time, it may not be charged completely until you use it several times.

On batteries

- Do not charge a dry battery.
- Do not carry the dry or rechargeable batteries with coins or other metallic objects. It can generate heat if the positive and negative terminals of the batteries are accidentally contacted by a metallic object.
- When you are not going to use the main unit for a long time, remove the battery to prevent any damage from battery leakage and corrosion.

On AC power adaptor

- Use only the supplied AC power adaptor (for charging stand). Do not use any other AC power adaptor.



Polarity of the plug

- Connect the AC power adaptor to an easily accessible AC outlet. Should you notice an abnormality in the AC power adaptor, disconnect it from the AC outlet immediately.
- Do not touch the AC power adaptor with wet hands.

On handling

- Do not leave the unit in a location near heat sources, or in a place subject to direct sunlight, excessive dust or sand, moisture, rain, mechanical shock, or in a car with its windows closed.
- We do not recommend the use of tape longer than 90 minutes. They are very thin and tend to be stretched easily. This may cause malfunction of the unit or sound deterioration.
- The LCD display may become hard to see or slow down when using the unit at high temperatures (above 40°C/104°F) or at low temperatures (below 0°C/32°F). At room temperature, the display will return to its normal operating condition.
- If the unit has not been used for long, set it in the playback mode to warm up for a few minutes before you start using again.

On the remote control

Use the supplied remote control only with this unit.

On headphones/earphones

Road safety
Do not use headphones/earphones while driving, cycling, or operating any motorized vehicle. It may create a traffic hazard and is illegal in some areas. It can also be potentially dangerous to play your headphones/earphones at high volume while walking, especially at pedestrian crossings. You should exercise extreme caution or discontinue use in potentially hazardous situations.

General

Power requirements
1.5 V
Rechargeable battery
One R6 (size AA) battery

Dimensions (w/h/d)
Approx. 77.1 × 108.0 × 22.5 mm
(3¼ × 4¼ × ¾ inches) excl. projecting parts and controls

Mass
Approx. 153 g (5.4 oz) (main unit only)

Supplied accessories
AC power adaptor (1)
Battery case (1)
Stereo headphones or earphones with remote control (1)
Charging stand (1)
Rechargeable battery (NH-14WM(A), 1.2 V, 1 350 mAh (min), Ni-MH) (1)
Rechargeable battery carrying case (1)
Carrying pouch (1)

On maintenance

- Clean the tape head and tape path, using a cotton swab and commercially available cleaning solvent after every 10 hours of use.
- To clean the exterior, use a soft cloth slightly moistened in water. Do not use alcohol, benzine or thinner.
- Clean the headphones/earphones and remote control plugs periodically.
- Clean the battery case terminals (both inside and outside) and the terminals periodically with a cotton swab or soft cloth as illustrated.

Troubleshooting

The sound drops out or comes with excessive noise.

- Clean the headphones/earphones and remote control plugs.
- The unit does not operate at all.
- Charge the battery or replace the dry battery with a new one.
 - HOLD is activated. Deactivate HOLD.

Tape operation is not possible.

- Insert a cassette tape.

The volume cannot be turned up.

- If AVLS is on, turn it off.

The display and the operations are not normal.

- Remove the power sources for 15 seconds or more, and then set them again.

Specifications

Radio section

Frequency range
FM: 76.0 - 90.0 MHz (Japan)
87.5 - 108 MHz (other countries/regions)
AM: 531 - 1 710 kHz (Japan)
530 - 1 710 kHz (North, Central, and South America)
531 - 1 602 kHz (other countries/regions)

Tape section

Frequency response
Playback: 40 - 15 000 Hz

Output
Headphones (Ⓕ) jack
Load impedance 8 - 300 Ω

General

Power requirements
1.5 V
Rechargeable battery
One R6 (size AA) battery

Dimensions (w/h/d)
Approx. 77.1 × 108.0 × 22.5 mm
(3¼ × 4¼ × ¾ inches) excl. projecting parts and controls

Mass
Approx. 153 g (5.4 oz) (main unit only)

Supplied accessories
AC power adaptor (1)
Battery case (1)
Stereo headphones or earphones with remote control (1)
Charging stand (1)
Rechargeable battery (NH-14WM(A), 1.2 V, 1 350 mAh (min), Ni-MH) (1)
Rechargeable battery carrying case (1)
Carrying pouch (1)

Design and specifications are subject to change without notice.