

TV/WEATHER/FM Stereo/AM PLL Synthesized Radio

Operating Instructions



“WALKMAN” is a registered trademark of Sony Corporation to represent Headphone Stereo products. **WALKMAN** is a registered trademark of Sony Corporation.

TV/WEATHER/FM/AM WALKMAN

SRF-M37V

© 2003 Sony Corporation Printed in China

http://www.sony.net/

For customers who purchased this product in the USA Please register this product on line at <http://www.sony.com/productregistration>. Proper registration will enable us to send you periodic mailings about new products, services, and other important announcements. Registering your product will also allow us to contact you in the unlikely event that the product needs adjustment or modification. Thank you.

WARNING

You are cautioned that any changes or modifications not expressly approved in this manual could void your authority to operate this equipment.

This device complies with Part 15 of the FCC Rules. Operation is subject to the condition that this device does not cause harmful interference.

Trade Name: SONY
Model name: SRF-M37V

FC Tested To Comply
With FCC Standards

FOR HOME OR OFFICE USE

If you have any questions about this product, you may call: Sony Customer Information Services Center 1-800-222-7669 or <http://www.sony.com/>

Trade Name: Declaration of Conformity
Model: SONY SRF-M37V
Responsible Party: Sony Electronics Inc.
Address: 16530 Via Esprillo, San Diego, CA 92127 USA
Telephone Number: 858-942-2230

This device complies with Part 15 of the FCC Rules. Operation is subject to the following two conditions: (1) This device may not cause harmful interference, and (2) this device must accept any interference received, including interference that may cause undesired operation.

Before You Begin

Thank you for choosing the Sony radio! It will give you many hours of reliable service and listening pleasure. Before operating the radio, please read these instructions thoroughly and retain them for future reference.

Features

- TV/WEATHER/FM/AM 4 band PLL (phase locked loop) synthesized radio.
- Easy Preset Digital Tuning with 25 memory presets.
- 5 direct presets calls and 1 direct weather-band button.
- Ergonomic Design for belt-holder use.

Notes on AM Channel Step

The AM channel step differs depending on areas. See “Changing AM Channel Step”.

Precautions

- Operate the unit only on 1.5 V DC with one size AAA (R03) battery.
- Avoid exposure to temperature extremes, direct sunlight, moisture, sand, dust or mechanical shock. Never leave the unit in a car parked under the sun.
- Should any solid object or liquid fall into the unit, remove the battery and have the unit checked by qualified personnel before operating it any further.
- In vehicles or buildings, radio reception may be difficult or noisy. Try listening near a window.
- To clean the casing, use a soft cloth dampened with a mild detergent solution.

Notes on Headphones

Road safety

Do not use headphones while driving, cycling, or operating any motorized vehicle. It may create a traffic hazard and is illegal in many areas. It can also be potentially dangerous to play your headphones at high volume while walking, especially at pedestrian crossings. You should exercise extreme caution or discontinue use in potentially hazardous situations.

Preventing hearing damage

Avoid using headphones at high volume. Hearing experts advise against continuous, loud and extended play. If you experience a ringing in your ears, reduce volume or discontinue use.

Caring for others

Keep the volume at a moderate level. This will allow you to hear outside sounds and to be considerate to people around you.

Warning

If there is lightning when you are using the unit, take off the headphones immediately.

If you have any questions or problems concerning your unit, please consult your nearest Sony dealer.

Troubleshooting

Should any problem persist after you have made the following checks, consult your nearest Sony dealer.

All buttons do not operate at all.

- “**o**” is displayed. Slide the **HOLD** switch so that “**o**” disappears.

Very weak or interrupted sound, or unsatisfactory reception

- Weak battery.
- In a vehicle or in a building, move closer to a window.

There is hum or noise.

- If **TV/WB/FM SENS** is set to **LOCAL**, set to **DX**.

Noise occurs.

- Ensure that the unit is not near a mobile phone or any other device that emits radio waves.

Display is dim, or no indication is displayed.

- Weak battery.
- The unit is being used in extremely high or low temperatures or in a place with excessive moisture.

The station cannot be received when a PRESET TUNING (1 to 5) button is pressed.

- You chose the wrong preset number.
- The memory of the station has been initialized. Preset the station again.

The power cannot be turned on, and “**o**” is flashing in the display.

- The battery have been completely exhausted.

The preset stations may be initialized, if a maintenance service is performed. Please note down your settings in case you want to preset them again.

Specifications

Time display:
12-hour system

Frequency range

Band	Range	Channel step
TV	2 - 13 ch	1 channel
WEATHER	1 - 7 ch	1 channel
FM	87.5 – 108 MHz	0.1 MHz
AM	530 – 1 710 kHz	10 kHz

Output

⌄ (headphones) jack (ø 3.5 mm, stereo minijack)

Power output

2.8 mW + 2.8 mW (at 10 % harmonic distortion)

Power requirements

1.5 V DC, one size AAA (R03) battery

Dimensions

Approx. 83 × 63 × 32 mm (w/h/d)

(3 3/8 × 2 1/2 × 1 5/16 inches) incl. projecting parts and controls

Approx. 83 × 63 × 25 mm (w/h/d)

(3 3/8 × 2 1/2 × 1 inches) not incl. projecting parts and controls

Mass

Approx. 94 g (3.32 oz.) incl. battery and belt clip.

Accessories Supplied

Stereo headphones (1)

Belt Clip (1)

Design and specifications are subject to change without notice.

Installing the Battery

(See Fig. **A**–**ⓐ**)

- 1 Open the battery compartment lid and install one size AAA (R03) battery (not supplied) with correct polarity. When battery is first installed, “AM 12:00” flashes in the display. Once the current time is set, the flashing stops.
- 2 Close the lid.

Battery Life (Approx. hours)	(JEITA*)			
When using	TV	WEATHER	FM	AM
Sony alkaline size AAA (LR 03)	31	31	34	54
Sony size AAA (R03)	12	12	13	24

* Measured by JEITA (Japan Electronics and Information Technology Industries Association) standards. The actual battery life may vary depending on the circumstance of the unit.

When to replace the battery

You can check the remaining battery power that appears in the display. The indicators are as follows:

Indicator	
	Full strength*
	Weakening*
	When the battery becomes exhausted, the unit will turn off. Replace with new battery. When you press POWER after installing the new battery, the indicator changes to “”.

* Displayed only when the radio is turned on.

Note

Do not take more than 3 minutes to replace the battery, otherwise, your clock settings and preset stations will be initialized. Should that happen, reset the functions again.

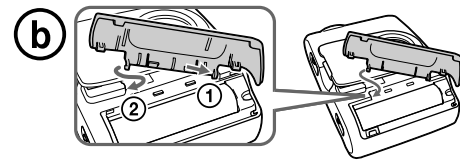
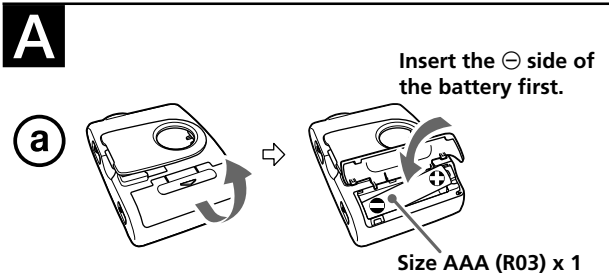
Notes on battery

- Do not charge the dry battery.
- Do not carry the dry battery together with coins or other metallic objects. It can generate heat if the positive and negative terminals of the battery are accidentally come into contact with metallic objects.
- When you are not going to use the unit for a long time, remove the battery to avoid damage from battery leakage and corrosion.

To attach the battery compartment lid if it is accidentally detached (See Fig. **A**–**ⓑ**)

The battery compartment lid is designed to come off when opened with excessive force. To put it back on, see the illustration.

- 1 Insert one side of the lid as illustrated.
- 2 Push the other side to attach.



LIMITED WARRANTY (U.S. Only)

Sony Electronics Inc. (“Sony”) warrants this product against defects in material or workmanship for the time periods and as set forth below. Pursuant to this Limited Warranty, Sony will, at its option, (i) repair the product using new or refurbished parts or (ii) replace the product with a new or refurbished product. For purposes of this Limited Warranty, “refurbished” means a product or part that has been returned to its original specifications. **In the event of a defect, these are your exclusive remedies.**

Term: For a period of one (1) year from the original date of purchase of the product, Sony will, at its option, repair or replace with new or refurbished product or parts, any product or parts determined to be defective.

This Limited Warranty covers only the hardware components packaged with the Product. It does not cover technical assistance for hardware or software usage and it does not cover any software products whether or not contained in the Product; any such software is provided “AS IS” unless expressly provided for in any enclosed software Limited Warranty. Please refer to the End User License Agreements included with the Product for your rights and obligations with respect to the software.

Instructions: To obtain warranty service, you must deliver the product, freight prepaid, in either its original packaging or packaging affording an equal degree of protection to the Sony authorized service facility specified. **It is your responsibility to backup any data, software or other materials you may have stored or preserved on your unit. It is likely that such data, software, or other materials will be lost or reformatted during service and Sony will not be responsible for any such damage or loss.** A dated purchase receipt is required. For specific instructions on how to obtain warranty service for your product,

The Address of the Laredo Fulfillment Center is:

Laredo Fulfillment Center
10227 Crossroads Loop Suite B
Laredo, TX 78045

Visit Sony’s Web Site:
www.sony.com/service

Or call the **Sony Customer Information Service Center**
1-800-222-SONY (7669)

For an accessory or part not available from your authorized dealer, call:

1-800-488-SONY (7669)

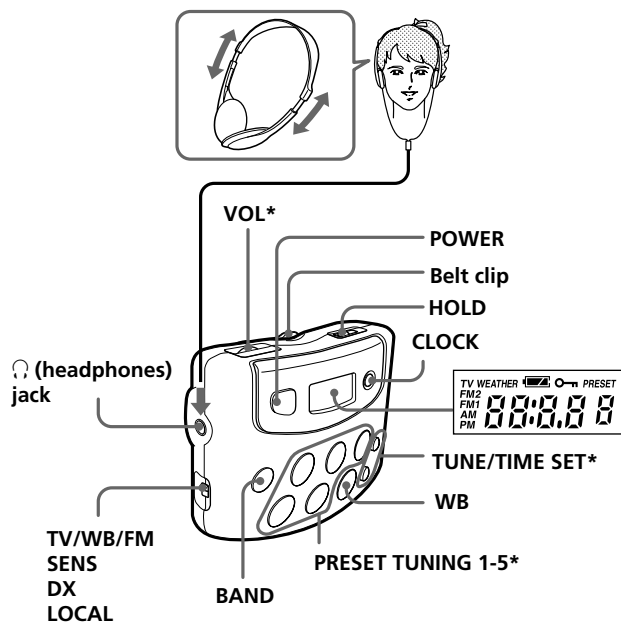
Repair / Replacement Warranty: This Limited Warranty shall apply to any repair, replacement part or replacement product for the remainder of the original Limited Warranty period or for ninety (90) days, whichever is longer. Any parts or product replaced under this Limited Warranty will become the property of Sony.

This Limited Warranty only covers product issues caused by defects in material or workmanship during ordinary consumer use; it does not cover product issues caused by any other reason, including but not limited to product issues due to commercial use, acts of God, misuse, limitations of technology, or modification of or to any part of the Sony product. This Limited Warranty does not cover Sony products sold AS IS or WITH ALL FAULTS or consumables (such as fuses or batteries). This Limited Warranty is invalid if the factory-applied serial number has been altered or removed from the product. This Limited Warranty is valid only in the United States.

LIMITATION ON DAMAGES: SONY SHALL NOT BE LIABLE FOR ANY INCIDENTAL OR CONSEQUENTIAL DAMAGES FOR BREACH OF ANY EXPRESS OR IMPLIED WARRANTY ON THIS PRODUCT.

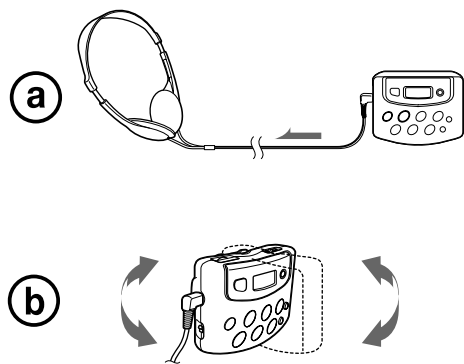
DURATION OF IMPLIED WARRANTIES: EXCEPT TO THE EXTENT PROHIBITED BY APPLICABLE LAW, ANY IMPLIED WARRANTY OF MERCHANTABILITY OR FITNESS FOR A PARTICULAR PURPOSE ON THIS PRODUCT IS LIMITED IN DURATION TO THE DURATION OF THIS WARRANTY.

Some states do not allow the exclusion or limitation of incidental or consequential damages, or allow limitations on how long an implied warranty lasts, so the above limitations or exclusions may not apply to you. This Limited Warranty gives you specific legal rights and you may have other rights which vary from state to state.



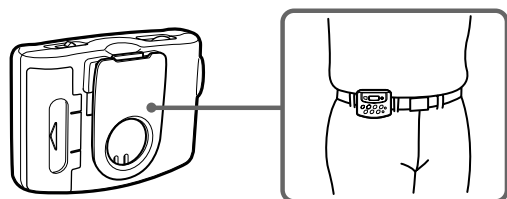
* There is a tactile dot on/beside Vol, TUNE/TIME SET +, and the number 2 button.

B

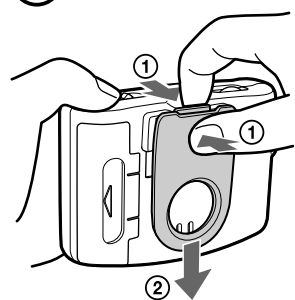


C

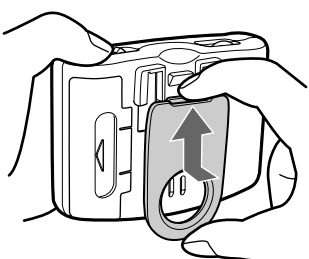
Using the Belt Clip



(a) To detach



(b) To attach



Preventing Accidental Change

— HOLD Function

Slide **HOLD** in the direction of the arrow. "o" is displayed, indicating that all the function buttons are locked. To cancel HOLD, slide **HOLD** in the opposite direction of the arrow so that "o" disappears.

Setting the Clock

The display will flash "AM 12:00" when the battery is first inserted.

- 1 Hold down **CLOCK** for more than 2 seconds. The beep sounds and the hour flashes in the display.
 - 2 Press **TUNE/TIME SET +** or **-** until the correct hour appears in the display. Each press changes the digit(s) by one. When you keep the button pressed, the digit(s) change rapidly.
 - 3 Press **CLOCK**. The beep sounds and the minute starts to flash. Repeat step 2 to set the minute. After setting the minute, press **CLOCK** again. The two beeps sound and the clock starts from 0 seconds.
- 12-hour system: "AM 12:00" = midnight
"PM 12:00" = noon

Changing AM Channel Step

The AM channel step differs depending on areas. The channel step of this unit is factory-set to 10 kHz. Change the settings as shown below to be able to listen to the radio.

Area	Channel step
North and South American countries	10kHz
Other countries/regions	9kHz

Note
When the AM channel step is changed, the preset stations for AM will be initialized.

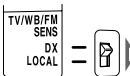
- 1 Press **POWER** to turn off the power.
- 2 While holding down **CLOCK**, keep pressing **POWER** for more than 5 seconds. Two short beeps sound, and the AM channel step will be changed. "AM 9" (or "AM 10") is displayed for about 2 seconds. If you proceed to step 2 again, the channel step changes again.

Improving the Reception

TV/WEATHER/FM:
Extend the headphones cord which functions as the TV/WEATHER/FM antenna (See Fig. B-①).
AM: Rotate the unit horizontally for optimum reception. A ferrite bar antenna is built-in the unit (See Fig. B-②).

Set **TV/WB/FM SENS** to **LOCAL** if interference is prevalent and reception is too strong. Under normal conditions, set it to **DX**.

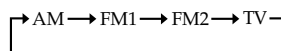
Note
If **TV/WB/FM SENS** is set to **LOCAL** under normal conditions, reception sensitivity will decrease.



Playing the Radio

— Manual Tuning

- 1 Connect the headphones to the (headphones) jack.
- 2 Press **POWER** to turn on the radio.
- 3 Press **BAND** to select the band. Each press changes the band as follows:



To change the band to WEATHER, press **WB**. You can return to the previous frequency by pressing **BAND**.

FM1 and FM2 are differentiated only for Preset tuning. For Manual tuning of FM stations, select either band.

- 4 Each band memorizes the frequency you had tuned previously. Press **TUNE/TIME SET +** or **-** to tune in to the desired station. Two short beeps sound when the minimum frequency of each band is received during tuning.
- 5 Adjust the volume using **VOL**.

To turn off the radio, press **POWER**.

Presetting Your Favorite Station

— Preset Tuning

You can preset up to 10 stations in FM (5 stations in FM1, 5 stations in FM2), and 5 stations in each AM, TV, WEATHER.

Presetting a station

- 1 Follow steps 1 to 4 in "Playing the Radio" and manually tune in to the station you wish to preset.

- 2 Press the preset tuning **1 to 5** button you wish to preset for more than a few seconds. You will hear two confirmation beeps and preset number appears in the display.

To preset another station, repeat these steps.

To change the preset station, tune in to the desired station and hold down the preset tuning **1 to 5** button. The new station will replace the previous station on the preset button.

Example: Display window when you preset FM 90.0 MHz in the preset tuning **2** button for FM2.



Tuning in a Preset Station

- 1 Press **POWER**.
- 2 Press **BAND** or **WB** to select the band.
- 3 Press the desired preset tuning button.
- 4 Adjust the volume using **VOL**.

Note

Holding down the desired preset tuning button for more than a few seconds will replace the previous station on the preset tuning button with the station you tuned in to.

Using the Belt Clip (See Fig. C)

Use the belt clip when attaching the unit to your belt.

To detach the belt clip, see fig. C-①.

To attach the belt clip, see fig. C-②.