

Portable MiniDisc Player

Operating instructions
XXXXXX (XXXX)



Sony Corporation © 2000 Printed in Japan

WARNING

To prevent fire or shock hazard, do not expose the unit to rain or moisture.

To avoid electrical shock, do not open the cabinet. Refer servicing to qualified personnel only.

Caution
The use of optical instruments with this product will increase eye hazard. Listening for many hours at maximum volume may damage your hearings.

CAUTION — LASER RADIATION WHEN OPEN

DO NOT STARE INTO BEAM OR VIEW DIRECTLY WITH OPTICAL INSTRUMENTS
Information

IN NO EVENT SHALL SELLER BE LIABLE FOR ANY DIRECT, INCIDENTAL OR CONSEQUENTIAL DAMAGES OF ANY NATURE, OR LOSSES OR EXPENSES RESULTING FROM ANY DEFECTIVE PRODUCT OR THE USE OF ANY PRODUCT.

Certain countries may regulate disposal of the battery used to power this product. Please consult with your local authority.

"MD WALKMAN" is a trademark of Sony Corporation.

Welcome!

Welcome to the world of the MiniDisc! Here are some of the capabilities and features you'll discover with the new MiniDisc Player.

- Small body almost the size of a MiniDisc jacket
- Ideal weight and size; fits in your shirt pocket.
- Personalized sound through Digital Sound Preset functions
- You can store two sets of sound quality adjustments (made during playback) to two switches.
- Low power-consumption design enables extended battery life.
- Simple "One-Touch Eject" function for easy MiniDisc handling
- A single press of the OPEN button causes the player lid to open and the MiniDisc to eject.
- Easy-to-operate headphones remote control with backlit LCD
- The LCD displays disc and track information, playback mode as well as battery condition. Keep the main unit in your pocket and operate the MiniDisc player through the "slim stick" remote control.
- Shock-resistant memory offsets up to 40 seconds of optical read errors.

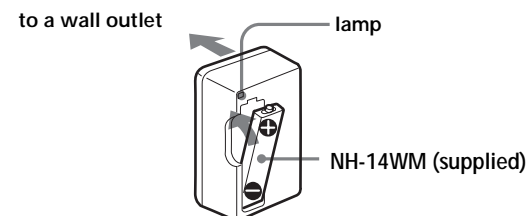
Playing an MD right away!^A

Charge the supplied rechargeable battery, before using it for the first time. Other choices are a dry battery and house current. For details, see "Power Sources".

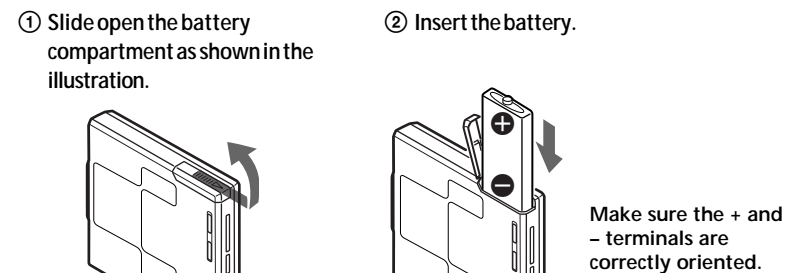
Stereo or monaural playback is automatically selected, depending on the sound source.

1 Charge the rechargeable battery.

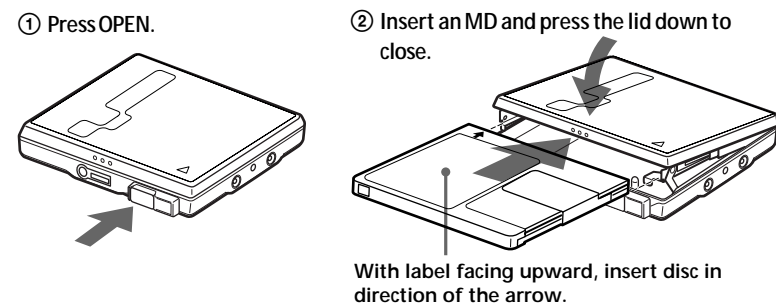
After about 1.5 hours, charging ends and the lamp on the charger turns off. (To get maximum performance from battery, continue charging it for another hour after the lamp turns off.)



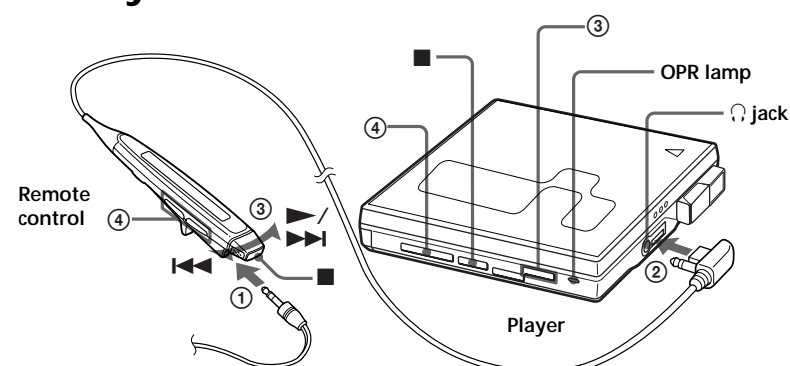
2 Insert the rechargeable battery.



3 Insert an MD.



4 Play an MD.



- 1 Connect the headphones to the remote control. Plug it in firmly all the way.
- 2 Connect the headphones with the remote control to the jack.
- 3 Press **▶▶▶** (or press the control towards **▶▶▶▶▶** or **◀◀◀** on the remote control). The OPR lamp on the player lights up and the player starts to play the first track. When using the remote control, a short beep sounds in the headphones.
- 4 Press **VOLUME +/-** (or press **VOL +/-** on the remote control) to adjust the volume. The volume indicator appears on the remote control to allow you to check the volume.

To stop play, press **■**. The OPR lamp on the player goes off. The display on the remote control disappears after a while. When using the remote control, a long beep sounds in the headphones.

To	Do this (Beeps in the headphones)
Pause	Press on the remote control. (Continuous short beeps) Press on the remote control again to resume play. ^{*1}
Find the beginning of the current track	Press ◀◀◀ once. Press the control towards ◀◀◀ on the remote control. (Three short beeps)
Find the beginning of the previous tracks	Press ◀◀◀ repeatedly. Press the control towards ◀◀◀ on the remote control repeatedly. (Continuous three short beeps)
Find the beginning of the next track	Press ▶▶▶ once. Press the control towards ▶▶▶ on the remote control. (Two short beeps)
Go backwards while playing ^{*1}	Hold down ◀◀◀ . Press and hold the control towards ◀◀◀ on the remote control.
Go forward while playing ^{*1}	Hold down ▶▶▶ . Press and hold the control towards ▶▶▶ on the remote control.
Remove the MD	Press ■ , and then press OPEN . ^{*2}

If playback does not start
Make sure the player is not locked. For details, see "To lock the controls (HOLD)".

For models supplied with the AC plug adaptor
If the battery charger does not fit the wall outlet, use the AC plug adaptor.

Display window while playing back
For details, see "To know the track name and time".

Track number^{*3} or elapsed time of the track being played



Track number

Tips

- The OPR lamp on the player lights up on the player during playback. When you press **■**, the lamp goes off.
- The display on the remote control disappears after a while after you have pressed **■**.

Note

Do not press OPEN during playback. If you do, the lid opens and playback stops.

When using optional headphones
Use headphones with a stereo-miniplug. You cannot use headphones with a microplug.

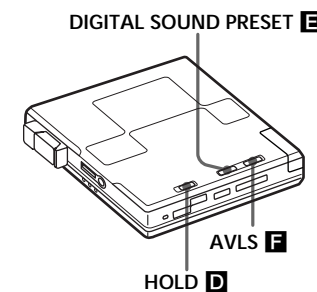
^{*1} When you press **◀◀◀** or **▶▶▶** on the player during pause (**||**), the player resumes playback.
If you hold down **◀◀◀** or **▶▶▶** on the player (or press and hold the control towards **◀◀◀** or **▶▶▶** on the remote control) during pause (**||**), you can fast forward/rewind without listening to the playback sound.

^{*2} Once you open the lid, the point to start playback will change to the beginning of the first track.

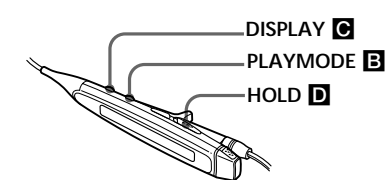
^{*3} Appears only with MDs that have been electronically labeled.

► Various ways of playback

Bottom side of the player



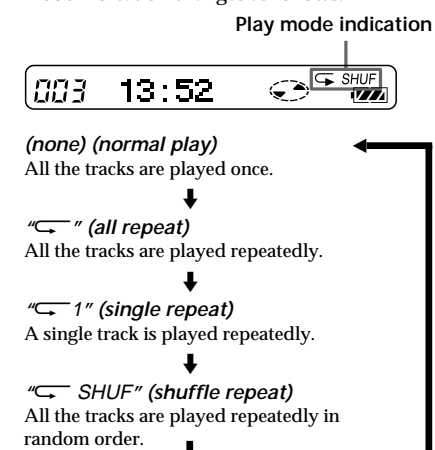
Remote control



Playing tracks repeatedly

You can play tracks repeatedly in three ways — all repeat, single repeat, and shuffle repeat.

Press PLAYMODE while the player is playing an MD. Each time you press PLAYMODE, the play mode indication changes as follows.



Tips on playback

To know the track name and time

Press DISPLAY on the remote control while the player is playing an MD. Each time you press DISPLAY, the display changes as follows.



Note

Disc and track names appear only with MDs that have been electronically labeled.

To lock the controls (HOLD)

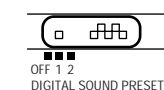
To prevent the buttons from being accidentally operated when you carry the player, use this function.

Slide HOLD on the player in the direction of the **→** to lock the controls of the unit. Slide HOLD on the remote control in the direction of the **→** to lock the controls of the remote control.

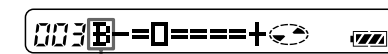
To adjust the sound quality (DIGITAL SOUND PRESET)

You can make adjustments to the sound quality to suit your taste, and then store two sets of these adjustments.

- 1 Slide DIGITAL SOUND PRESET to select 1 or 2. If you want, you may also listen to MDs without making any adjustments (i.e., by using the factory settings).

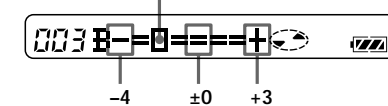


- 2 During playback, hold down DISPLAY or PLAYMODE until the following indicator appears on the remote control. Press DISPLAY to select bass, and PLAYMODE to select treble.



When you select bass-setting mode, "B" appears. When you select treble-setting mode, "T" appears.

- 3 Press **▶▶▶** or **◀◀◀** on the remote repeatedly to adjust the bass or the treble. Adjust the sound as you listen to it. Example: While adjusting the bass. The cursor moves. (Position: -2)



The sound can be adjusted in 8 steps (-4, -3...±0...+2, +3). If you hold down PLAYMODE while in bass-setting mode, the mode will change to treble-setting mode. If you hold down DISPLAY while in treble-setting mode, the mode will change to bass-setting mode.

- 4 Press DISPLAY or PLAYMODE. The sound settings are saved and the playback display appears again. If you perform no sound adjustments for a given duration of time, the playback display appears again and any settings that were made are saved.

Returning the MD player to its factory settings

To return the MD player to its factory settings, reset the following items to the value indicated:

- DIGITAL SOUND PRESET 1: bass +1, treble ±0
- DIGITAL SOUND PRESET 2: bass +3, treble ±0

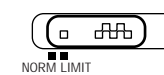
Notes

- Settings can also be changed while playback is momentarily paused (**||**).
- Settings cannot be changed through the operation buttons on the player.
- Settings cannot be changed while the DIGITAL SOUND PRESET switch is set to OFF.

To protect your hearing (AVLS)

The AVLS (Automatic Volume Limiter System) function keeps down the maximum volume to protect your ears.

Set AVLS to LIMIT. The volume is kept at a moderate level, even if you try to turn the volume above the limited level.

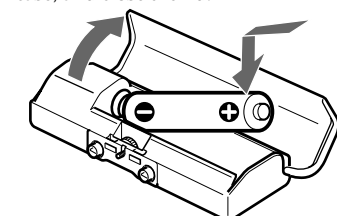


► Power sources

You can use the player on a dry battery, house current, or a Ni-MH rechargeable battery.

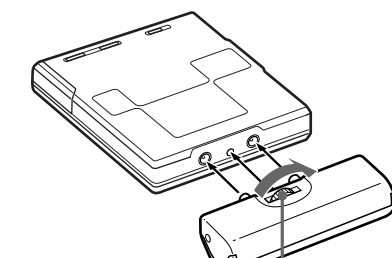
Using on a dry battery

- 1 Insert one LR6 (size AA) alkaline battery (not supplied) into the supplied battery case, and close the lid.



Make sure the + and - terminals are correctly oriented.

- 2 Attach the battery case to the player.



Turn towards LOCK. To release the battery case, turn towards RELEASE.

When to replace or charge the batteries
You can check the battery condition with the battery indication which is displayed while using the player.

- ◻ Battery power decreasing
- ◻ Weak batteries.

The batteries have gone out. "LOW BATT" flashes in the display on the remote control, and the power goes off.

Battery life*

Batteries	Playback
Ni-MH rechargeable battery (NH-14WM)	Approx. 21 hours**
One LR6 (size AA) alkaline battery	Approx. 31 hours
One LR6 (size AA) alkaline battery and a Ni-MH rechargeable battery (NH-14WM)	Approx. 56 hours**

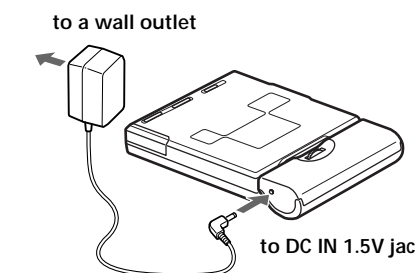
* The battery life may be shorter depending on operating conditions and the temperature of the location.

** With a fully charged battery

Using on house current

Remove the rechargeable battery when using the player on house current.

- 1 Attach the supplied battery case to the player.
- 2 Connect the AC-E15L AC power adaptor (not supplied) to the DC IN 1.5V jack of the battery case.
- 3 Connect the AC power adaptor to a wall outlet.



Note
The battery indication is displayed while using the AC power adaptor.

►Additional information

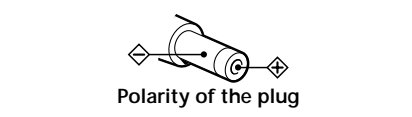
Precautions

On safety

Do not put any foreign objects in the DC IN 1.5V jack.

On power sources

- For use in your house: Use the AC power adaptor AC-E15L (not supplied). Do not use any other AC power adaptor since it may cause the player to malfunction.



- If you are not going to use this player for a long time, be sure to disconnect the power supply (AC power adaptor, dry battery, or rechargeable battery). To remove the AC power adaptor from the wall outlet, grasp the adaptor plug itself; never pull the cord.

On charging

- Be sure to use the supplied battery charger.
- Charging time may vary depending on the battery condition.
- When you use the battery for the first time or after a long period of disuse, the battery life may be shorter. In this case, charge and discharge the battery several times. The battery life will be restored.
- If the rechargeable battery capacity becomes half the normal life, replace it with a new one.
- Remove the rechargeable battery when the unit is not to be used for a long time. Do not carry the rechargeable battery in your pocket or a bag, etc., with metallic objects such as key rings.

On the battery case attachment terminals on the main unit

- Do not short-circuit the battery case attachment terminals on the main unit with metallic objects, etc., when the rechargeable battery is inserted, as this may cause heat and can be dangerous.
- When carrying the player in a bag, be sure to put it in the supplied carrying pouch.

On heat build-up

Heat may build up in the player if it is used for an extended period of time. In this case, leave the player to cool down.

On installation

- Never use the player where it will be subjected to extremes of light, temperature, moisture or vibration.
- Never wrap the player in anything when it is being used with the AC power adaptor. Heat build-up in the player may cause malfunction or injury.

On the headphones

Road safety

Do not use headphones while driving, cycling, or operating any motorized vehicle. It may create a traffic hazard and is illegal in many areas. It can also be potentially dangerous to play your player at high volume while walking, especially at pedestrian crossings. You should exercise extreme caution or discontinue use in potentially hazardous situations.

Preventing hearing damage

Avoid using headphones at high volume. Hearing experts advise against continuous, loud and extended play. If you experience a ringing in your ears, reduce the volume or discontinue use.

Caring for others

Keep the volume at a moderate level. This will allow you to hear outside sounds and to be considerate of the people around you.

On the MiniDisc cartridge

- Do not touch the internal disc directly. Forcing the shutter open may damage the internal disc.
- Do not place the cartridge where it will be subjected to light, temperature, moisture or dust.

On cleaning

- Clean the player casing with a soft cloth slightly moistened with water or a mild detergent solution. Do not use any type of abrasive pad, scouring powder or solvent such as alcohol or benzene as it may mar the finish of the casing.
- Wipe the disc cartridge with a dry cloth to remove dirt.
- Dust on the lens may prevent the unit from operating properly. Be sure to close the disc compartment lid after inserting or ejecting an MD.

On dry batteries and the battery carrying case

Incorrect battery usage may lead to leakage of battery fluid or bursting batteries. To prevent such accidents, observe the following precautions:

- Install batteries with the + and – poles aligned correctly.
- Do not try to recharge dry batteries.
- When the player is not to be used for a long time, be sure to remove the batteries.
- If a battery leak should develop, carefully and thoroughly wipe away battery fluid from the battery compartment before inserting new ones.
- Do not carry the dry battery in your pocket or a bag, etc., with metallic objects such as key rings. The terminals of the battery or the battery carrying case may heat up from a short-circuit and can be dangerous.

On mechanical noise

The player gives out mechanical noise while operating, which is caused by the power-saving system of the player. This is not a malfunction.

If you have any questions or problems concerning your player, please consult your nearest Sony dealer.

Troubleshooting

Should any problem persist after you have made these checks, consult your nearest Sony dealer.

The player does not work or works poorly.

- You tried to play with no disc in the player (“NO DISC” flashes on the remote control).
 - Insert an MD.
- The hold function is activated and the controls are locked. (If you press any of the operation buttons on the player. “HOLD” flashes on the remote control.)
 - Slide HOLD against the direction of the arrow to release the hold function.
- Moisture has condensed inside the player.
 - Take the MD out and leave the player’s lid open for several hours until the moisture evaporates.
- The rechargeable battery or dry battery is weak (“LOW BATT” flashes on the remote control).
 - Replace the dry battery or recharge the battery.
- The rechargeable battery or dry battery has been installed incorrectly.
 - Install the battery with correct polarity.

- An MD with no recording on it is inserted (“BLANKDISC” flashes on the remote control).
 - Insert a recorded MD.
- The player cannot read the disc (it’s scratched or dirty) (“DISC ERR” flashes on the remote control).
 - Reinsert or replace the disc.
- While operating, the player received a mechanical shock, too much static, abnormal power voltage caused by lightning etc.
 - Restart as follows.
 - Disconnect all the power sources.
 - Leave the player for about 30 seconds.
 - Connect the power source.

The MD is not played normally.

- The player is set to the repeat mode (“↶” is displayed on the remote control).
 - Press PLAYMODE repeatedly until “↶” disappears, then start playing.

An MD is not played from the first track.

- Disc playing stopped before it came to the last track.
 - Press ◀ repeatedly or eject and reinsert the MD once to go back to the beginning of the disc, and restart playing after checking the track number in the display.

The Digital Sound Preset function does not function.

- The DIGITAL SOUND PRESET switch is set to OFF.
 - Set the switch to 1 or 2.

Playback sound skips.

- The player is placed where it receives continuous vibration.
 - Put the player on a stable place.
- A very short track may cause sound to skip.

Sound has a lot of static.

- Strong magnetism from a television or such device is interfering with operation.
 - Move the player away from the source of strong magnetism.

The rechargeable battery does not start charging (in case of a charger with a lid).

- The lid of the battery charger is not closed properly.
 - Close the lid and slide the lock.

No sound comes through the headphones.

- The headphones plug is not firmly connected.
 - Connect the headphones plug firmly to the remote control.
 - Connect the headphones plug firmly to the ♂ jack.
- Volume is too low.
 - Adjust the volume by pressing VOLUME +/- (VOL +/- on the remote control).
- AVLS is on.
 - Slide AVLS to NORM.

Specifications

System

Audio playing system
MiniDisc digital audio system
Laser diode properties
Material: GaAlAs
Wavelength: λ = 790 nm
Emission duration: continuous
Laser output: less than 44.6 μW*
* This output is the value measured at a distance of 200 mm from the objective lens surface on the optical pick-up block with 7 mm aperture.

Revolutions
600 rpm to 2250 rpm
Error correction
Advanced Cross Interleave Reed Solomon Code (ACIRC)
Sampling frequency
44.1 kHz
Coding
Adaptive TTransform Acoustic Coding (ATRAC)
Modulation system
EFM (Eight to Fourteen Modulation)
Number of channels
2 stereo channels
1 monaural channel
Frequency response
20 to 20,000 Hz ± 3 dB
Wow and Flutter
Below measurable limit
Outputs
Headphones: stereo mini-jack, maximum output level 5 mW + 5 mW, load impedance 16 ohms

General

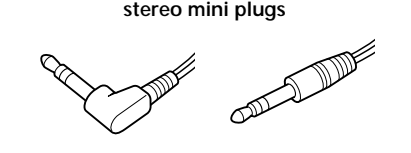
Power requirements
Nickel metal hydride rechargeable battery NH-14WM (supplied)
One LR6 (size AA) battery (not supplied)
Sony AC Power Adaptor AC-E15L* (not supplied) connected to the DC IN 1.5V jack
Battery operation time
See “When to replace or charge the batteries”
Dimensions
Approx. 78.3 × 13.9 × 71.4 mm (w/h/d) (3 1⁄8 × 9⁄16 × 2 7⁄8 in.) not including projecting parts and controls
Mass
Approx. 85 g (3.0 oz.) the player only
Approx. 128 g (4.5 oz.) incl. a premastered MD and a nickel metal hydride rechargeable battery NH-14WM
Supplied accessories
Battery Charger (1)
Rechargeable battery (1)
Rechargeable battery carrying case (1)
Headphones with a remote control (1)
Dry battery case (1)
Carrying pouch (1)

Optional accessories

AC-E15L AC power adaptor*
MDR-series Stereo headphones**
SRS-series Sony Active Speakers

- The operative voltage for the AC power adaptor varies depending upon the country in which it is sold. Therefore, purchase the AC power adaptor in the country you intend to use it.

- ** Whether you should plug the headphones directly to the ♂ jack on the main unit or to a remote control, use only headphones with stereo mini plugs.



Your dealer may not handle some of the above listed accessories. Please ask the dealer for detailed information about the accessories in your country.

US and foreign patents licensed from Dolby Laboratories Licensing Corporation.

Design and specifications are subject to change without notice.

English (Traditional Chinese)

As you read, refer to the illustrations in the English text.

Welcome!

Welcome to the world of the MiniDisc! Here are some of the capabilities and features you'll discover with the new MiniDisc player.

- Small body almost the size of a MiniDisc jacket**
Ideal weight and size; fits in your shirt pocket.
- Personalized sound through Digital Sound Preset functions**
You can store two sets of sound quality adjustments (made during playback) to two switches.
- Low power-consumption design enables extended battery life.**
- Simple “One-Touch Eject” function for easy MiniDisc handling**
A single press of the OPEN button causes the player lid to open and the MiniDisc to eject.
- Easy-to-operate headphones remote control with backlit LCD**
The LCD displays disc and track information, playback mode as well as battery condition. Keep the main unit in your pocket and operate the MiniDisc player through the “slim stick” remote control.
- Shock-resistant memory offsets up to 40 seconds of optical read errors.**

“MD WALKMAN” is a trademark of Sony Corporation.

►MD playing

Playing an MD! ⓘ

Charge the supplied rechargeable battery, before using it for the first time. Other choices are a dry battery and house current (see “Power Sources”). Stereo or monaural playback is automatically selected, depending on the sound source.

- Charge the supplied rechargeable battery NH-14WM with the supplied battery charger.

After about 1.5 hours, charging ends and the lamp on the charger turns off. (To get maximum performance from battery, continue charging it for another hour after the lamp turns off.) A fully-charged battery should power consecutive playback for about 21 hours before you need to recharge it.

- Open the rechargeable battery compartment lid and insert the charged battery.

- Insert an MD.

- Press OPEN.
 - Insert the MD with the label side facing up, and press the lid down to close.

- Play the MD.

- Connect the headphones to the remote control.
- Connect the headphones with the remote control to the ♂ jack on the player.
- Press ►►► (or press the control towards ►/►► or ◀◀◀ on the remote control).

The OPR lamp on the player lights up and the player starts to play the first track.

When using the remote control, a short beep sounds in the headphones.
- Press VOLUME +/- (or press VOL +/- on the remote control) to adjust the volume.

The volume indicator appears on the remote control to allow you to check the volume.

To stop play, press ■.

The OPR lamp on the player goes off.

The display on the remote control disappears after a while.

When using the remote control, a long beep sounds in the headphones.

Other disc operation

To	Do this (Beeps in the headphones)
Pause	Press ⏸ on the remote control. (Continuous short beeps) <p>Press ⏸ on the remote control again to resume play.*</p>
Find the beginning of the current track	Press ◀◀◀ once. <p>Press the control towards ◀◀◀ on the remote control. (Three short beeps)</p>
Find the beginning of the previous tracks	Press ◀◀◀ repeatedly. <p>Press the control towards ◀◀◀ on the remote control repeatedly. (Continuous three short beeps)</p>
Find the beginning of the next track	Press ▶▶▶ once. <p>Press the control towards ▶/▶▶ on the remote control. (Two short beeps)</p>
Go backwards while playing*	Hold down ◀◀◀ . <p>Press and hold the control towards ◀◀◀ on the remote control.</p>
Go forward while playing*	Hold down ▶▶▶ . <p>Press and hold the control towards ▶/▶▶ on the remote control.</p>
Remove the MD	Press ■ , and then press OPEN.**

- * When you press **◀◀◀** or **▶▶▶** on the player during pause (**⏸**), the player resumes playback. If you hold down **◀◀◀** or **▶▶▶** on the player (or press and hold the control towards **◀◀◀** or **▶/▶▶** on the remote control) during pause (**⏸**), you can fast forward/rewind without listening to the playback sound.
- ** Once you open the lid, the point to start playback changes to the beginning of the first track.

If playback does not start

Make sure the player is not locked. See “To lock the controls (HOLD).”

►Various ways of playback

Playing tracks repeatedly ⓘ

Press PLAYMODE on the remote control while the player is playing an MD. Each time you press PLAYMODE, the play mode indication changes as follows:

(none) (normal play) <p>All the tracks are played once.</p> <p>↓</p>
“↶” (all repeat) <p>All the tracks are played repeatedly.</p> <p>↓</p>
“↶ 1” (single repeat) <p>A single track is played repeatedly.</p> <p>↓</p>
“↶ <i>SHUF</i> ” (shuffle repeat) <p>All the tracks are played repeatedly in random order.</p>

Using other functions

To know the track name and time ⓘ

Press DISPLAY on the remote control while the player is playing an MD. Each time you press DISPLAY, the elapsed time of the current track and the track number, the track name and number, and the disc name and the number of tracks recorded on the MD appear.

Note

Disc and track names appear only with MDs that have been electronically labeled.

To lock the controls (HOLD) ⓘ

On the player, slide HOLD in the direction of the **↔** to lock the controls of the player. On the remote control, slide HOLD in the direction of the **↔** to lock the controls of the remote control.

To adjust the sound quality (DIGITAL SOUND PRESET) ⓘ

You can make adjustments to the sound quality to suit your taste, and then store two sets of these adjustments.

- Slide DIGITAL SOUND PRESET to select 1 or 2.

If you want, you may also listen to MDs without making any adjustments (i.e., by using the factory settings).

- During playback, hold down DISPLAY or PLAYMODE until the following indicator appears on the remote control. Press DISPLAY to select bass, and PLAYMODE to select treble.

- Press **▶/▶▶** or **◀◀◀** on the remote repeatedly to adjust the bass or the treble. Adjust the sound as you listen to it. If you hold down PLAYMODE while in bass-setting mode, the mode will change to treble-setting mode. If you hold down DISPLAY while in treble-setting mode, the mode will change to bass-setting mode. The sound can be adjusted in 8 steps (−4, −3, …±0…+2, +3).

- Press DISPLAY or PLAYMODE. The sound settings are saved and the playback display appears again.

Returning the MD player to its factory settings

To return the MD player to its factory settings, reset the following items to the value indicated:

- DIGITAL SOUND PRESET 1: bass +1, treble ±0
- DIGITAL SOUND PRESET 2: bass +3, treble ±0

Notes

- Settings can also be changed while playback is momentarily paused (**⏸**).
- Settings cannot be changed through the operation buttons on the player.
- Settings cannot be changed while the DIGITAL SOUND PRESET switch is set to OFF.

To protect your hearing (AVLS) ⓘ

Set AVLS (Automatic Volume Limiter System) to LIMIT. The volume is kept at a moderate level, even if you try to turn the volume above the limited level.

►Power Sources

Using on a battery ⓘ

Insert one LR6 (size AA) alkaline battery with correct polarity, and then attach the supplied battery case to the player.

The battery should power consecutive playback for about 31 hours before you need to replace it. If you use both a dry battery and a rechargeable battery (consecutively), the total playback time should be about 56 hours.

When to recharge or replace the battery

When the battery indication changes to ↔, the rechargeable battery or the dry battery is weak. Recharge the rechargeable battery or replace the dry battery. When the battery is exhausted, “LOW BATT” flashes in the display on the remote control and the power goes off.

Using on house current ⓘ

Before using the unit, remove the rechargeble battery if it is installed.

Attach the supplied battery case and connect the AC-E15L AC power adaptor (not supplied) to the DC IN 1.5V jack of the battery case.

Do not use any other AC power adaptor.

Note

The battery indication mark is displayed while using the AC power adaptor.